

Sample Ballot - Democratic Party Primary  
Wayne County, North Carolina  
March 3, 2026

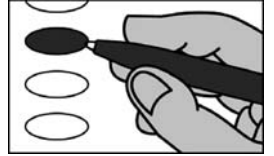
D0001



PCT: 01

**BALLOT MARKING INSTRUCTIONS**

- A. With the marking device provided or a black ball point pen, completely fill in the oval to the left of each candidate or selection of your choice as shown.
- B. If you tear, deface or wrongly mark this ballot, return it to request a replacement.



**PARTISAN NOMINATIONS**

**US Senate**  
(You may vote for ONE)

- Daryl Farrow
- Justin E. Dues
- Roy Cooper
- Robert Colon
- Marcus W. Williams
- Orrick Quick

**US House of Representatives  
District 3**  
(You may vote for ONE)

- Raymond Smith
- Allison Jaslow

**NC Court of Appeals Judge  
Seat 3**  
(You may vote for ONE)

- James Weldon Whalen
- Christine Marie Walczyk

**REFERENDUM**

**Wayne County  
Local Sales and Use Tax**

Local sales and use tax at the rate of one-quarter percent (0.25%) in addition to all other State and local sales and use taxes.

- For
- Against

**End of Ballot**

Sample Ballot - Democratic Party Primary  
Wayne County, North Carolina  
March 3, 2026

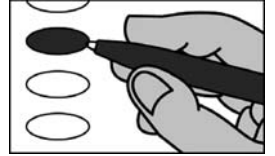
**D0002**



PCT: 01

**BALLOT MARKING INSTRUCTIONS**

- A. With the marking device provided or a black ball point pen, completely fill in the oval to the left of each candidate or selection of your choice as shown.
- B. If you tear, deface or wrongly mark this ballot, return it to request a replacement.



**PARTISAN NOMINATIONS**

**US Senate**  
(You may vote for ONE)

- Daryl Farrow
- Justin E. Dues
- Roy Cooper
- Robert Colon
- Marcus W. Williams
- Orrick Quick

**US House of Representatives  
District 3**  
(You may vote for ONE)

- Raymond Smith
- Allison Jaslow

**NC Court of Appeals Judge  
Seat 3**  
(You may vote for ONE)

- James Weldon Whalen
- Christine Marie Walczyk

**End of Ballot**

SAMPLE BALLOT  
SAMPLE BALLOT  
SAMPLE BALLOT  
SAMPLE BALLOT  
SAMPLE BALLOT  
SAMPLE BALLOT  
SAMPLE BALLOT  
SAMPLE BALLOT  
SAMPLE BALLOT  
SAMPLE BALLOT  
SAMPLE BALLOT

SAMPLE BALLOT  
SAMPLE BALLOT  
SAMPLE BALLOT  
SAMPLE BALLOT  
SAMPLE BALLOT  
SAMPLE BALLOT  
SAMPLE BALLOT  
SAMPLE BALLOT  
SAMPLE BALLOT  
SAMPLE BALLOT  
SAMPLE BALLOT

Sample Ballot - Democratic Party Primary  
Wayne County, North Carolina  
March 3, 2026

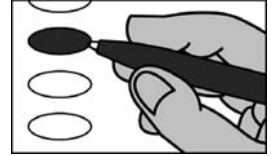
D0003



PCT: 02

**BALLOT MARKING INSTRUCTIONS**

- A. With the marking device provided or a black ball point pen, completely fill in the oval to the left of each candidate or selection of your choice as shown.
- B. If you tear, deface or wrongly mark this ballot, return it to request a replacement.



**PARTISAN NOMINATIONS**

**US Senate**  
(You may vote for ONE)

- Daryl Farrow
- Justin E. Dues
- Roy Cooper
- Robert Colon
- Marcus W. Williams
- Orrick Quick

**US House of Representatives  
District 3**  
(You may vote for ONE)

- Raymond Smith
- Allison Jaslow

**NC Court of Appeals Judge  
Seat 3**  
(You may vote for ONE)

- James Weldon Whalen
- Christine Marie Walczyk

**REFERENDUM**

**Wayne County  
Local Sales and Use Tax**

Local sales and use tax at the rate of one-quarter percent (0.25%) in addition to all other State and local sales and use taxes.

- For
- Against

**End of Ballot**

Sample Ballot - Democratic Party Primary  
Wayne County, North Carolina  
March 3, 2026

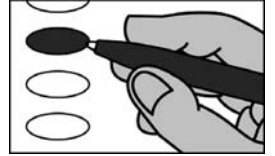
D0004



PCT: 02

**BALLOT MARKING INSTRUCTIONS**

- A. With the marking device provided or a black ball point pen, completely fill in the oval to the left of each candidate or selection of your choice as shown.
- B. If you tear, deface or wrongly mark this ballot, return it to request a replacement.



**PARTISAN NOMINATIONS**

**US Senate**  
(You may vote for ONE)

- Daryl Farrow
- Justin E. Dues
- Roy Cooper
- Robert Colon
- Marcus W. Williams
- Orrick Quick

**US House of Representatives  
District 3**  
(You may vote for ONE)

- Raymond Smith
- Allison Jaslow

**NC Court of Appeals Judge  
Seat 3**  
(You may vote for ONE)

- James Weldon Whalen
- Christine Marie Walczyk

**End of Ballot**

SAMPLE BALLOT  
SAMPLE BALLOT  
SAMPLE BALLOT  
SAMPLE BALLOT  
SAMPLE BALLOT  
SAMPLE BALLOT  
SAMPLE BALLOT  
SAMPLE BALLOT  
SAMPLE BALLOT  
SAMPLE BALLOT  
SAMPLE BALLOT

SAMPLE BALLOT  
SAMPLE BALLOT  
SAMPLE BALLOT  
SAMPLE BALLOT  
SAMPLE BALLOT  
SAMPLE BALLOT  
SAMPLE BALLOT  
SAMPLE BALLOT  
SAMPLE BALLOT  
SAMPLE BALLOT  
SAMPLE BALLOT

Sample Ballot - Democratic Party Primary  
Wayne County, North Carolina  
March 3, 2026

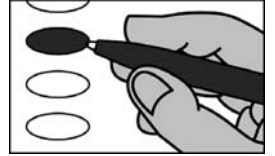
D0005



PCT: 03

**BALLOT MARKING INSTRUCTIONS**

- A. With the marking device provided or a black ball point pen, completely fill in the oval to the left of each candidate or selection of your choice as shown.
- B. If you tear, deface or wrongly mark this ballot, return it to request a replacement.



**PARTISAN NOMINATIONS**

**US Senate**  
(You may vote for ONE)

- Daryl Farrow
- Justin E. Dues
- Roy Cooper
- Robert Colon
- Marcus W. Williams
- Orrick Quick

**US House of Representatives  
District 3**  
(You may vote for ONE)

- Raymond Smith
- Allison Jaslow

**NC Court of Appeals Judge  
Seat 3**  
(You may vote for ONE)

- James Weldon Whalen
- Christine Marie Walczyk

**REFERENDUM**

**Wayne County  
Local Sales and Use Tax**

Local sales and use tax at the rate of one-quarter percent (0.25%) in addition to all other State and local sales and use taxes.

- For
- Against

**End of Ballot**

Sample Ballot - Democratic Party Primary  
Wayne County, North Carolina  
March 3, 2026

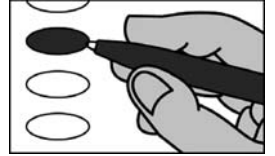
D0006



PCT: 03

**BALLOT MARKING INSTRUCTIONS**

- A. With the marking device provided or a black ball point pen, completely fill in the oval to the left of each candidate or selection of your choice as shown.
- B. If you tear, deface or wrongly mark this ballot, return it to request a replacement.



**PARTISAN NOMINATIONS**

**US Senate**  
(You may vote for ONE)

- Daryl Farrow
- Justin E. Dues
- Roy Cooper
- Robert Colon
- Marcus W. Williams
- Orrick Quick

**US House of Representatives  
District 3**  
(You may vote for ONE)

- Raymond Smith
- Allison Jaslow

**NC Court of Appeals Judge  
Seat 3**  
(You may vote for ONE)

- James Weldon Whalen
- Christine Marie Walczyk

**End of Ballot**

SAMPLE BALLOT  
SAMPLE BALLOT  
SAMPLE BALLOT  
SAMPLE BALLOT  
SAMPLE BALLOT  
SAMPLE BALLOT  
SAMPLE BALLOT  
SAMPLE BALLOT  
SAMPLE BALLOT  
SAMPLE BALLOT  
SAMPLE BALLOT

SAMPLE BALLOT  
SAMPLE BALLOT  
SAMPLE BALLOT  
SAMPLE BALLOT  
SAMPLE BALLOT  
SAMPLE BALLOT  
SAMPLE BALLOT  
SAMPLE BALLOT  
SAMPLE BALLOT  
SAMPLE BALLOT  
SAMPLE BALLOT

Sample Ballot - Democratic Party Primary  
Wayne County, North Carolina  
March 3, 2026

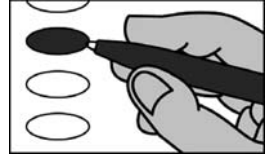
D0007



PCT: 04

**BALLOT MARKING INSTRUCTIONS**

- A. With the marking device provided or a black ball point pen, completely fill in the oval to the left of each candidate or selection of your choice as shown.
- B. If you tear, deface or wrongly mark this ballot, return it to request a replacement.



**PARTISAN NOMINATIONS**

**US Senate**  
(You may vote for ONE)

- Daryl Farrow
- Justin E. Dues
- Roy Cooper
- Robert Colon
- Marcus W. Williams
- Orrick Quick

**US House of Representatives  
District 3**  
(You may vote for ONE)

- Raymond Smith
- Allison Jaslow

**NC Court of Appeals Judge  
Seat 3**  
(You may vote for ONE)

- James Weldon Whalen
- Christine Marie Walczyk

**REFERENDUM**

**Wayne County  
Local Sales and Use Tax**

Local sales and use tax at the rate of one-quarter percent (0.25%) in addition to all other State and local sales and use taxes.

- For
- Against

**End of Ballot**

Sample Ballot - Democratic Party Primary  
Wayne County, North Carolina  
March 3, 2026

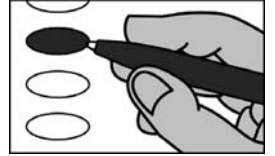
D0008



PCT: 04

**BALLOT MARKING INSTRUCTIONS**

- A. With the marking device provided or a black ball point pen, completely fill in the oval to the left of each candidate or selection of your choice as shown.
- B. If you tear, deface or wrongly mark this ballot, return it to request a replacement.



**PARTISAN NOMINATIONS**

**US Senate**  
(You may vote for ONE)

- Daryl Farrow
- Justin E. Dues
- Roy Cooper
- Robert Colon
- Marcus W. Williams
- Orrick Quick

**US House of Representatives  
District 3**  
(You may vote for ONE)

- Raymond Smith
- Allison Jaslow

**NC Court of Appeals Judge  
Seat 3**  
(You may vote for ONE)

- James Weldon Whalen
- Christine Marie Walczyk

**End of Ballot**

SAMPLE BALLOT  
SAMPLE BALLOT  
SAMPLE BALLOT  
SAMPLE BALLOT  
SAMPLE BALLOT  
SAMPLE BALLOT  
SAMPLE BALLOT  
SAMPLE BALLOT  
SAMPLE BALLOT  
SAMPLE BALLOT  
SAMPLE BALLOT  
SAMPLE BALLOT

SAMPLE BALLOT  
SAMPLE BALLOT  
SAMPLE BALLOT  
SAMPLE BALLOT  
SAMPLE BALLOT  
SAMPLE BALLOT  
SAMPLE BALLOT  
SAMPLE BALLOT  
SAMPLE BALLOT  
SAMPLE BALLOT  
SAMPLE BALLOT  
SAMPLE BALLOT



Sample Ballot - Democratic Party Primary  
Wayne County, North Carolina  
March 3, 2026

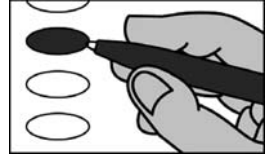
D0009



PCT: 05

**BALLOT MARKING INSTRUCTIONS**

- A. With the marking device provided or a black ball point pen, completely fill in the oval to the left of each candidate or selection of your choice as shown.
- B. If you tear, deface or wrongly mark this ballot, return it to request a replacement.



**PARTISAN NOMINATIONS**

**US Senate**  
(You may vote for ONE)

- Daryl Farrow
- Justin E. Dues
- Roy Cooper
- Robert Colon
- Marcus W. Williams
- Orrick Quick

**US House of Representatives  
District 3**  
(You may vote for ONE)

- Raymond Smith
- Allison Jaslow

**NC Court of Appeals Judge  
Seat 3**  
(You may vote for ONE)

- James Weldon Whalen
- Christine Marie Walczyk

**REFERENDUM**

**Wayne County  
Local Sales and Use Tax**

Local sales and use tax at the rate of one-quarter percent (0.25%) in addition to all other State and local sales and use taxes.

- For
- Against

**End of Ballot**

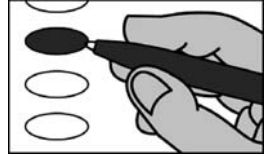
Sample Ballot - Democratic Party Primary  
 Wayne County, North Carolina  
 March 3, 2026

**D0010**



PCT: 05

**BALLOT MARKING INSTRUCTIONS**  
 A. With the marking device provided or a black ball point pen, completely fill in the oval to the left of each candidate or selection of your choice as shown.  
 B. If you tear, deface or wrongly mark this ballot, return it to request a replacement.



SAMPLE BALLOT  
 SAMPLE BALLOT  
 SAMPLE BALLOT  
 SAMPLE BALLOT  
 SAMPLE BALLOT  
 SAMPLE BALLOT  
 SAMPLE BALLOT  
 SAMPLE BALLOT  
 SAMPLE BALLOT  
 SAMPLE BALLOT  
 SAMPLE BALLOT  
 SAMPLE BALLOT  
 SAMPLE BALLOT

SAMPLE BALLOT  
 SAMPLE BALLOT  
 SAMPLE BALLOT  
 SAMPLE BALLOT  
 SAMPLE BALLOT  
 SAMPLE BALLOT  
 SAMPLE BALLOT  
 SAMPLE BALLOT  
 SAMPLE BALLOT  
 SAMPLE BALLOT  
 SAMPLE BALLOT  
 SAMPLE BALLOT  
 SAMPLE BALLOT

<b>PARTISAN NOMINATIONS</b>	
<b>US Senate</b> (You may vote for ONE)	
<input type="radio"/> Daryl Farrow <input type="radio"/> Justin E. Dues <input type="radio"/> Roy Cooper <input type="radio"/> Robert Colon <input type="radio"/> Marcus W. Williams <input type="radio"/> Orrick Quick	
<b>US House of Representatives District 3</b> (You may vote for ONE)	
<input type="radio"/> Raymond Smith <input type="radio"/> Allison Jaslow	
<b>NC Court of Appeals Judge Seat 3</b> (You may vote for ONE)	
<input type="radio"/> James Weldon Whalen <input type="radio"/> Christine Marie Walczyk	
<b>End of Ballot</b>	

Sample Ballot - Democratic Party Primary  
Wayne County, North Carolina  
March 3, 2026

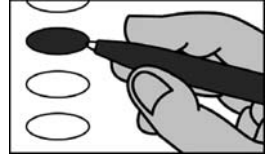
D0011



PCT: 06

**BALLOT MARKING INSTRUCTIONS**

- A. With the marking device provided or a black ball point pen, completely fill in the oval to the left of each candidate or selection of your choice as shown.
- B. If you tear, deface or wrongly mark this ballot, return it to request a replacement.



**PARTISAN NOMINATIONS**

**US Senate**  
(You may vote for ONE)

- Daryl Farrow
- Justin E. Dues
- Roy Cooper
- Robert Colon
- Marcus W. Williams
- Orrick Quick

**US House of Representatives  
District 3**  
(You may vote for ONE)

- Raymond Smith
- Allison Jaslow

**NC Court of Appeals Judge  
Seat 3**  
(You may vote for ONE)

- James Weldon Whalen
- Christine Marie Walczyk

**REFERENDUM**

**Wayne County  
Local Sales and Use Tax**

Local sales and use tax at the rate of one-quarter percent (0.25%) in addition to all other State and local sales and use taxes.

- For
- Against

**End of Ballot**

Sample Ballot - Democratic Party Primary  
Wayne County, North Carolina  
March 3, 2026

D0012



PCT: 06

**BALLOT MARKING INSTRUCTIONS**

- A. With the marking device provided or a black ball point pen, completely fill in the oval to the left of each candidate or selection of your choice as shown.
- B. If you tear, deface or wrongly mark this ballot, return it to request a replacement.



**PARTISAN NOMINATIONS**

**US Senate**  
(You may vote for ONE)

- Daryl Farrow
- Justin E. Dues
- Roy Cooper
- Robert Colon
- Marcus W. Williams
- Orrick Quick

**US House of Representatives  
District 3**  
(You may vote for ONE)

- Raymond Smith
- Allison Jaslow

**NC Court of Appeals Judge  
Seat 3**  
(You may vote for ONE)

- James Weldon Whalen
- Christine Marie Walczyk

**End of Ballot**

SAMPLE BALLOT  
SAMPLE BALLOT  
SAMPLE BALLOT  
SAMPLE BALLOT  
SAMPLE BALLOT  
SAMPLE BALLOT  
SAMPLE BALLOT  
SAMPLE BALLOT  
SAMPLE BALLOT  
SAMPLE BALLOT

SAMPLE BALLOT  
SAMPLE BALLOT  
SAMPLE BALLOT  
SAMPLE BALLOT  
SAMPLE BALLOT  
SAMPLE BALLOT  
SAMPLE BALLOT  
SAMPLE BALLOT  
SAMPLE BALLOT  
SAMPLE BALLOT

Sample Ballot - Democratic Party Primary  
Wayne County, North Carolina  
March 3, 2026

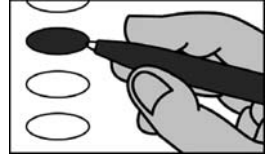
D0013



PCT: 07

**BALLOT MARKING INSTRUCTIONS**

- A. With the marking device provided or a black ball point pen, completely fill in the oval to the left of each candidate or selection of your choice as shown.
- B. If you tear, deface or wrongly mark this ballot, return it to request a replacement.



**PARTISAN NOMINATIONS**

**US Senate**  
(You may vote for ONE)

- Daryl Farrow
- Justin E. Dues
- Roy Cooper
- Robert Colon
- Marcus W. Williams
- Orrick Quick

**US House of Representatives  
District 3**  
(You may vote for ONE)

- Raymond Smith
- Allison Jaslow

**NC Court of Appeals Judge  
Seat 3**  
(You may vote for ONE)

- James Weldon Whalen
- Christine Marie Walczyk

**REFERENDUM**

**Wayne County  
Local Sales and Use Tax**

Local sales and use tax at the rate of one-quarter percent (0.25%) in addition to all other State and local sales and use taxes.

- For
- Against

**End of Ballot**

Sample Ballot - Democratic Party Primary  
Wayne County, North Carolina  
March 3, 2026

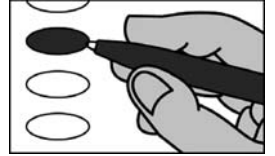
D0014



PCT: 07

**BALLOT MARKING INSTRUCTIONS**

- A. With the marking device provided or a black ball point pen, completely fill in the oval to the left of each candidate or selection of your choice as shown.
- B. If you tear, deface or wrongly mark this ballot, return it to request a replacement.



**PARTISAN NOMINATIONS**

**US Senate**  
(You may vote for ONE)

- Daryl Farrow
- Justin E. Dues
- Roy Cooper
- Robert Colon
- Marcus W. Williams
- Orrick Quick

**US House of Representatives  
District 3**  
(You may vote for ONE)

- Raymond Smith
- Allison Jaslow

**NC Court of Appeals Judge  
Seat 3**  
(You may vote for ONE)

- James Weldon Whalen
- Christine Marie Walczyk

**End of Ballot**

SAMPLE BALLOT  
SAMPLE BALLOT  
SAMPLE BALLOT  
SAMPLE BALLOT  
SAMPLE BALLOT  
SAMPLE BALLOT  
SAMPLE BALLOT  
SAMPLE BALLOT  
SAMPLE BALLOT  
SAMPLE BALLOT  
SAMPLE BALLOT  
SAMPLE BALLOT

SAMPLE BALLOT  
SAMPLE BALLOT  
SAMPLE BALLOT  
SAMPLE BALLOT  
SAMPLE BALLOT  
SAMPLE BALLOT  
SAMPLE BALLOT  
SAMPLE BALLOT  
SAMPLE BALLOT  
SAMPLE BALLOT  
SAMPLE BALLOT  
SAMPLE BALLOT

Sample Ballot - Democratic Party Primary  
Wayne County, North Carolina  
March 3, 2026

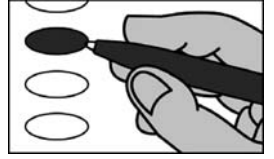
D0015



PCT: 08

**BALLOT MARKING INSTRUCTIONS**

- A. With the marking device provided or a black ball point pen, completely fill in the oval to the left of each candidate or selection of your choice as shown.
- B. If you tear, deface or wrongly mark this ballot, return it to request a replacement.



**PARTISAN NOMINATIONS**

**US Senate**  
(You may vote for ONE)

- Daryl Farrow
- Justin E. Dues
- Roy Cooper
- Robert Colon
- Marcus W. Williams
- Orrick Quick

**US House of Representatives  
District 3**  
(You may vote for ONE)

- Raymond Smith
- Allison Jaslow

**NC Court of Appeals Judge  
Seat 3**  
(You may vote for ONE)

- James Weldon Whalen
- Christine Marie Walczyk

**REFERENDUM**

**Wayne County  
Local Sales and Use Tax**

Local sales and use tax at the rate of one-quarter percent (0.25%) in addition to all other State and local sales and use taxes.

- For
- Against

**End of Ballot**

Sample Ballot - Democratic Party Primary  
Wayne County, North Carolina  
March 3, 2026

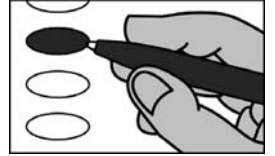
D0016



PCT: 08

**BALLOT MARKING INSTRUCTIONS**

- A. With the marking device provided or a black ball point pen, completely fill in the oval to the left of each candidate or selection of your choice as shown.
- B. If you tear, deface or wrongly mark this ballot, return it to request a replacement.



**PARTISAN NOMINATIONS**

**US Senate**  
(You may vote for ONE)

- Daryl Farrow
- Justin E. Dues
- Roy Cooper
- Robert Colon
- Marcus W. Williams
- Orrick Quick

**US House of Representatives  
District 3**  
(You may vote for ONE)

- Raymond Smith
- Allison Jaslow

**NC Court of Appeals Judge  
Seat 3**  
(You may vote for ONE)

- James Weldon Whalen
- Christine Marie Walczyk

**End of Ballot**

SAMPLE BALLOT  
SAMPLE BALLOT  
SAMPLE BALLOT  
SAMPLE BALLOT  
SAMPLE BALLOT  
SAMPLE BALLOT  
SAMPLE BALLOT  
SAMPLE BALLOT  
SAMPLE BALLOT  
SAMPLE BALLOT

SAMPLE BALLOT  
SAMPLE BALLOT  
SAMPLE BALLOT  
SAMPLE BALLOT  
SAMPLE BALLOT  
SAMPLE BALLOT  
SAMPLE BALLOT  
SAMPLE BALLOT  
SAMPLE BALLOT  
SAMPLE BALLOT



Sample Ballot - Democratic Party Primary  
Wayne County, North Carolina  
March 3, 2026

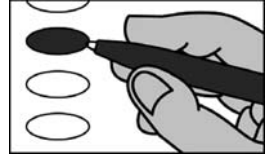
D0017



PCT: 09

**BALLOT MARKING INSTRUCTIONS**

- A. With the marking device provided or a black ball point pen, completely fill in the oval to the left of each candidate or selection of your choice as shown.
- B. If you tear, deface or wrongly mark this ballot, return it to request a replacement.



**PARTISAN NOMINATIONS**

**US Senate**  
(You may vote for ONE)

- Daryl Farrow
- Justin E. Dues
- Roy Cooper
- Robert Colon
- Marcus W. Williams
- Orrick Quick

**US House of Representatives  
District 3**  
(You may vote for ONE)

- Raymond Smith
- Allison Jaslow

**NC Court of Appeals Judge  
Seat 3**  
(You may vote for ONE)

- James Weldon Whalen
- Christine Marie Walczyk

**REFERENDUM**

**Wayne County  
Local Sales and Use Tax**

Local sales and use tax at the rate of one-quarter percent (0.25%) in addition to all other State and local sales and use taxes.

- For
- Against

**End of Ballot**

Sample Ballot - Democratic Party Primary  
Wayne County, North Carolina  
March 3, 2026

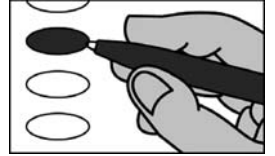
D0018



PCT: 09

**BALLOT MARKING INSTRUCTIONS**

- A. With the marking device provided or a black ball point pen, completely fill in the oval to the left of each candidate or selection of your choice as shown.
- B. If you tear, deface or wrongly mark this ballot, return it to request a replacement.



**PARTISAN NOMINATIONS**

**US Senate**  
(You may vote for ONE)

- Daryl Farrow
- Justin E. Dues
- Roy Cooper
- Robert Colon
- Marcus W. Williams
- Orrick Quick

**US House of Representatives  
District 3**  
(You may vote for ONE)

- Raymond Smith
- Allison Jaslow

**NC Court of Appeals Judge  
Seat 3**  
(You may vote for ONE)

- James Weldon Whalen
- Christine Marie Walczyk

**End of Ballot**

SAMPLE BALLOT  
SAMPLE BALLOT  
SAMPLE BALLOT  
SAMPLE BALLOT  
SAMPLE BALLOT  
SAMPLE BALLOT  
SAMPLE BALLOT  
SAMPLE BALLOT  
SAMPLE BALLOT  
SAMPLE BALLOT

SAMPLE BALLOT  
SAMPLE BALLOT  
SAMPLE BALLOT  
SAMPLE BALLOT  
SAMPLE BALLOT  
SAMPLE BALLOT  
SAMPLE BALLOT  
SAMPLE BALLOT  
SAMPLE BALLOT  
SAMPLE BALLOT

Sample Ballot - Democratic Party Primary  
Wayne County, North Carolina  
March 3, 2026

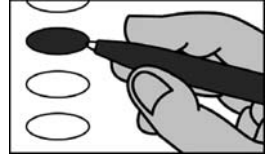
D0019



PCT: 10

**BALLOT MARKING INSTRUCTIONS**

- A. With the marking device provided or a black ball point pen, completely fill in the oval to the left of each candidate or selection of your choice as shown.
- B. If you tear, deface or wrongly mark this ballot, return it to request a replacement.



**PARTISAN NOMINATIONS**

**US Senate**  
(You may vote for ONE)

- Daryl Farrow
- Justin E. Dues
- Roy Cooper
- Robert Colon
- Marcus W. Williams
- Orrick Quick

**US House of Representatives District 3**  
(You may vote for ONE)

- Raymond Smith
- Allison Jaslow

**NC Court of Appeals Judge Seat 3**  
(You may vote for ONE)

- James Weldon Whalen
- Christine Marie Walczyk

**REFERENDUM**

**Wayne County Local Sales and Use Tax**

Local sales and use tax at the rate of one-quarter percent (0.25%) in addition to all other State and local sales and use taxes.

- For
- Against

**End of Ballot**

SAMPLE BALLOT  
SAMPLE BALLOT  
SAMPLE BALLOT  
SAMPLE BALLOT  
SAMPLE BALLOT  
SAMPLE BALLOT  
SAMPLE BALLOT  
SAMPLE BALLOT  
SAMPLE BALLOT  
SAMPLE BALLOT

SAMPLE BALLOT  
SAMPLE BALLOT  
SAMPLE BALLOT  
SAMPLE BALLOT  
SAMPLE BALLOT  
SAMPLE BALLOT  
SAMPLE BALLOT  
SAMPLE BALLOT  
SAMPLE BALLOT  
SAMPLE BALLOT

Sample Ballot - Democratic Party Primary  
Wayne County, North Carolina  
March 3, 2026

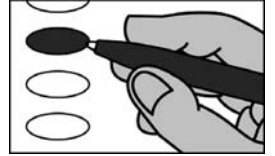
D0020



PCT: 10

**BALLOT MARKING INSTRUCTIONS**

- A. With the marking device provided or a black ball point pen, completely fill in the oval to the left of each candidate or selection of your choice as shown.
- B. If you tear, deface or wrongly mark this ballot, return it to request a replacement.



**PARTISAN NOMINATIONS**

**US Senate**  
(You may vote for ONE)

- Daryl Farrow
- Justin E. Dues
- Roy Cooper
- Robert Colon
- Marcus W. Williams
- Orrick Quick

**US House of Representatives  
District 3**  
(You may vote for ONE)

- Raymond Smith
- Allison Jaslow

**NC Court of Appeals Judge  
Seat 3**  
(You may vote for ONE)

- James Weldon Whalen
- Christine Marie Walczyk

**End of Ballot**

SAMPLE BALLOT  
SAMPLE BALLOT  
SAMPLE BALLOT  
SAMPLE BALLOT  
SAMPLE BALLOT  
SAMPLE BALLOT  
SAMPLE BALLOT  
SAMPLE BALLOT  
SAMPLE BALLOT  
SAMPLE BALLOT  
SAMPLE BALLOT

SAMPLE BALLOT  
SAMPLE BALLOT  
SAMPLE BALLOT  
SAMPLE BALLOT  
SAMPLE BALLOT  
SAMPLE BALLOT  
SAMPLE BALLOT  
SAMPLE BALLOT  
SAMPLE BALLOT  
SAMPLE BALLOT  
SAMPLE BALLOT

Sample Ballot - Democratic Party Primary  
Wayne County, North Carolina  
March 3, 2026

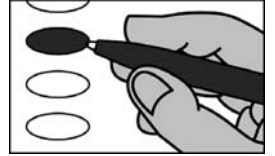
D0021



PCT: 11

**BALLOT MARKING INSTRUCTIONS**

- A. With the marking device provided or a black ball point pen, completely fill in the oval to the left of each candidate or selection of your choice as shown.
- B. If you tear, deface or wrongly mark this ballot, return it to request a replacement.



**PARTISAN NOMINATIONS**

**US Senate**  
(You may vote for ONE)

- Daryl Farrow
- Justin E. Dues
- Roy Cooper
- Robert Colon
- Marcus W. Williams
- Orrick Quick

**US House of Representatives  
District 3**  
(You may vote for ONE)

- Raymond Smith
- Allison Jaslow

**NC Court of Appeals Judge  
Seat 3**  
(You may vote for ONE)

- James Weldon Whalen
- Christine Marie Walczyk

**REFERENDUM**

**Wayne County  
Local Sales and Use Tax**

Local sales and use tax at the rate of one-quarter percent (0.25%) in addition to all other State and local sales and use taxes.

- For
- Against

**End of Ballot**

Sample Ballot - Democratic Party Primary  
Wayne County, North Carolina  
March 3, 2026

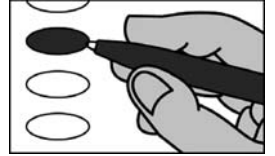
D0022



PCT: 11

**BALLOT MARKING INSTRUCTIONS**

- A. With the marking device provided or a black ball point pen, completely fill in the oval to the left of each candidate or selection of your choice as shown.
- B. If you tear, deface or wrongly mark this ballot, return it to request a replacement.



**PARTISAN NOMINATIONS**

**US Senate**  
(You may vote for ONE)

- Daryl Farrow
- Justin E. Dues
- Roy Cooper
- Robert Colon
- Marcus W. Williams
- Orrick Quick

**US House of Representatives  
District 3**  
(You may vote for ONE)

- Raymond Smith
- Allison Jaslow

**NC Court of Appeals Judge  
Seat 3**  
(You may vote for ONE)

- James Weldon Whalen
- Christine Marie Walczyk

**End of Ballot**

SAMPLE BALLOT  
SAMPLE BALLOT  
SAMPLE BALLOT  
SAMPLE BALLOT  
SAMPLE BALLOT  
SAMPLE BALLOT  
SAMPLE BALLOT  
SAMPLE BALLOT  
SAMPLE BALLOT  
SAMPLE BALLOT  
SAMPLE BALLOT

SAMPLE BALLOT  
SAMPLE BALLOT  
SAMPLE BALLOT  
SAMPLE BALLOT  
SAMPLE BALLOT  
SAMPLE BALLOT  
SAMPLE BALLOT  
SAMPLE BALLOT  
SAMPLE BALLOT  
SAMPLE BALLOT  
SAMPLE BALLOT

Sample Ballot - Democratic Party Primary  
Wayne County, North Carolina  
March 3, 2026

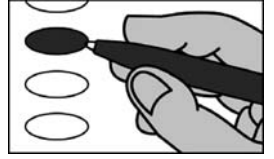
D0023



PCT: 12

**BALLOT MARKING INSTRUCTIONS**

- A. With the marking device provided or a black ball point pen, completely fill in the oval to the left of each candidate or selection of your choice as shown.
- B. If you tear, deface or wrongly mark this ballot, return it to request a replacement.



**PARTISAN NOMINATIONS**

**US Senate**  
(You may vote for ONE)

- Daryl Farrow
- Justin E. Dues
- Roy Cooper
- Robert Colon
- Marcus W. Williams
- Orrick Quick

**US House of Representatives  
District 3**  
(You may vote for ONE)

- Raymond Smith
- Allison Jaslow

**NC Court of Appeals Judge  
Seat 3**  
(You may vote for ONE)

- James Weldon Whalen
- Christine Marie Walczyk

**REFERENDUM**

**Wayne County  
Local Sales and Use Tax**

Local sales and use tax at the rate of one-quarter percent (0.25%) in addition to all other State and local sales and use taxes.

- For
- Against

**End of Ballot**

Sample Ballot - Democratic Party Primary  
Wayne County, North Carolina  
March 3, 2026

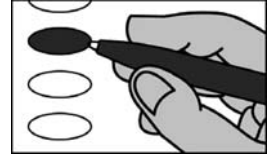
D0024



PCT: 12

**BALLOT MARKING INSTRUCTIONS**

- A. With the marking device provided or a black ball point pen, completely fill in the oval to the left of each candidate or selection of your choice as shown.
- B. If you tear, deface or wrongly mark this ballot, return it to request a replacement.



**PARTISAN NOMINATIONS**

**US Senate**  
(You may vote for ONE)

- Daryl Farrow
- Justin E. Dues
- Roy Cooper
- Robert Colon
- Marcus W. Williams
- Orrick Quick

**US House of Representatives  
District 3**  
(You may vote for ONE)

- Raymond Smith
- Allison Jaslow

**NC Court of Appeals Judge  
Seat 3**  
(You may vote for ONE)

- James Weldon Whalen
- Christine Marie Walczyk

**End of Ballot**

SAMPLE BALLOT  
SAMPLE BALLOT  
SAMPLE BALLOT  
SAMPLE BALLOT  
SAMPLE BALLOT  
SAMPLE BALLOT  
SAMPLE BALLOT  
SAMPLE BALLOT  
SAMPLE BALLOT  
SAMPLE BALLOT  
SAMPLE BALLOT

SAMPLE BALLOT  
SAMPLE BALLOT  
SAMPLE BALLOT  
SAMPLE BALLOT  
SAMPLE BALLOT  
SAMPLE BALLOT  
SAMPLE BALLOT  
SAMPLE BALLOT  
SAMPLE BALLOT  
SAMPLE BALLOT  
SAMPLE BALLOT



Sample Ballot - Democratic Party Primary  
Wayne County, North Carolina  
March 3, 2026

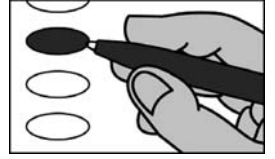
**D0025**



PCT: 13

**BALLOT MARKING INSTRUCTIONS**

- A. With the marking device provided or a black ball point pen, completely fill in the oval to the left of each candidate or selection of your choice as shown.
- B. If you tear, deface or wrongly mark this ballot, return it to request a replacement.



**PARTISAN NOMINATIONS**

**US Senate**  
(You may vote for ONE)

- Daryl Farrow
- Justin E. Dues
- Roy Cooper
- Robert Colon
- Marcus W. Williams
- Orrick Quick

**US House of Representatives  
District 3**  
(You may vote for ONE)

- Raymond Smith
- Allison Jaslow

**NC Court of Appeals Judge  
Seat 3**  
(You may vote for ONE)

- James Weldon Whalen
- Christine Marie Walczyk

**REFERENDUM**

**Wayne County  
Local Sales and Use Tax**

Local sales and use tax at the rate of one-quarter percent (0.25%) in addition to all other State and local sales and use taxes.

- For
- Against

**End of Ballot**

Sample Ballot - Democratic Party Primary  
Wayne County, North Carolina  
March 3, 2026

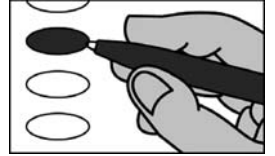
D0026



PCT: 13

**BALLOT MARKING INSTRUCTIONS**

- A. With the marking device provided or a black ball point pen, completely fill in the oval to the left of each candidate or selection of your choice as shown.
- B. If you tear, deface or wrongly mark this ballot, return it to request a replacement.



**PARTISAN NOMINATIONS**

**US Senate**  
(You may vote for ONE)

- Daryl Farrow
- Justin E. Dues
- Roy Cooper
- Robert Colon
- Marcus W. Williams
- Orrick Quick

**US House of Representatives  
District 3**  
(You may vote for ONE)

- Raymond Smith
- Allison Jaslow

**NC Court of Appeals Judge  
Seat 3**  
(You may vote for ONE)

- James Weldon Whalen
- Christine Marie Walczyk

**End of Ballot**

SAMPLE BALLOT  
SAMPLE BALLOT  
SAMPLE BALLOT  
SAMPLE BALLOT  
SAMPLE BALLOT  
SAMPLE BALLOT  
SAMPLE BALLOT  
SAMPLE BALLOT  
SAMPLE BALLOT  
SAMPLE BALLOT  
SAMPLE BALLOT

SAMPLE BALLOT  
SAMPLE BALLOT  
SAMPLE BALLOT  
SAMPLE BALLOT  
SAMPLE BALLOT  
SAMPLE BALLOT  
SAMPLE BALLOT  
SAMPLE BALLOT  
SAMPLE BALLOT  
SAMPLE BALLOT  
SAMPLE BALLOT

Sample Ballot - Democratic Party Primary  
Wayne County, North Carolina  
March 3, 2026

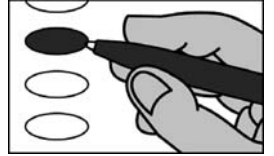
D0027



PCT: 14

**BALLOT MARKING INSTRUCTIONS**

- A. With the marking device provided or a black ball point pen, completely fill in the oval to the left of each candidate or selection of your choice as shown.
- B. If you tear, deface or wrongly mark this ballot, return it to request a replacement.



**PARTISAN NOMINATIONS**

**US Senate**  
(You may vote for ONE)

- Daryl Farrow
- Justin E. Dues
- Roy Cooper
- Robert Colon
- Marcus W. Williams
- Orrick Quick

**US House of Representatives  
District 3**  
(You may vote for ONE)

- Raymond Smith
- Allison Jaslow

**NC Court of Appeals Judge  
Seat 3**  
(You may vote for ONE)

- James Weldon Whalen
- Christine Marie Walczyk

**REFERENDUM**

**Wayne County  
Local Sales and Use Tax**

Local sales and use tax at the rate of one-quarter percent (0.25%) in addition to all other State and local sales and use taxes.

- For
- Against

**End of Ballot**

Sample Ballot - Democratic Party Primary  
Wayne County, North Carolina  
March 3, 2026

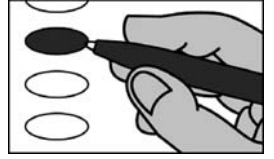
D0028



PCT: 14

**BALLOT MARKING INSTRUCTIONS**

- A. With the marking device provided or a black ball point pen, completely fill in the oval to the left of each candidate or selection of your choice as shown.
- B. If you tear, deface or wrongly mark this ballot, return it to request a replacement.



**PARTISAN NOMINATIONS**

**US Senate**  
(You may vote for ONE)

- Daryl Farrow
- Justin E. Dues
- Roy Cooper
- Robert Colon
- Marcus W. Williams
- Orrick Quick

**US House of Representatives  
District 3**  
(You may vote for ONE)

- Raymond Smith
- Allison Jaslow

**NC Court of Appeals Judge  
Seat 3**  
(You may vote for ONE)

- James Weldon Whalen
- Christine Marie Walczyk

**End of Ballot**

SAMPLE BALLOT  
SAMPLE BALLOT  
SAMPLE BALLOT  
SAMPLE BALLOT  
SAMPLE BALLOT  
SAMPLE BALLOT  
SAMPLE BALLOT  
SAMPLE BALLOT  
SAMPLE BALLOT  
SAMPLE BALLOT

SAMPLE BALLOT  
SAMPLE BALLOT  
SAMPLE BALLOT  
SAMPLE BALLOT  
SAMPLE BALLOT  
SAMPLE BALLOT  
SAMPLE BALLOT  
SAMPLE BALLOT  
SAMPLE BALLOT  
SAMPLE BALLOT

Sample Ballot - Democratic Party Primary  
Wayne County, North Carolina  
March 3, 2026

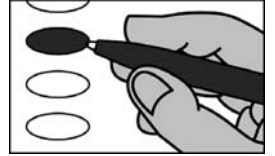
D0029



PCT: 15

**BALLOT MARKING INSTRUCTIONS**

- A. With the marking device provided or a black ball point pen, completely fill in the oval to the left of each candidate or selection of your choice as shown.
- B. If you tear, deface or wrongly mark this ballot, return it to request a replacement.



**PARTISAN NOMINATIONS**

**US Senate**  
(You may vote for ONE)

- Daryl Farrow
- Justin E. Dues
- Roy Cooper
- Robert Colon
- Marcus W. Williams
- Orrick Quick

**US House of Representatives  
District 3**  
(You may vote for ONE)

- Raymond Smith
- Allison Jaslow

**NC Court of Appeals Judge  
Seat 3**  
(You may vote for ONE)

- James Weldon Whalen
- Christine Marie Walczyk

**REFERENDUM**

**Wayne County  
Local Sales and Use Tax**

Local sales and use tax at the rate of one-quarter percent (0.25%) in addition to all other State and local sales and use taxes.

- For
- Against

**End of Ballot**

SAMPLE BALLOT  
SAMPLE BALLOT  
SAMPLE BALLOT  
SAMPLE BALLOT  
SAMPLE BALLOT  
SAMPLE BALLOT  
SAMPLE BALLOT  
SAMPLE BALLOT  
SAMPLE BALLOT  
SAMPLE BALLOT

SAMPLE BALLOT  
SAMPLE BALLOT  
SAMPLE BALLOT  
SAMPLE BALLOT  
SAMPLE BALLOT  
SAMPLE BALLOT  
SAMPLE BALLOT  
SAMPLE BALLOT  
SAMPLE BALLOT  
SAMPLE BALLOT

Sample Ballot - Democratic Party Primary  
Wayne County, North Carolina  
March 3, 2026

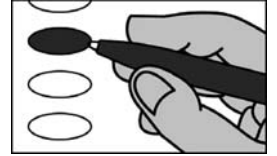
D0030



PCT: 15

**BALLOT MARKING INSTRUCTIONS**

- A. With the marking device provided or a black ball point pen, completely fill in the oval to the left of each candidate or selection of your choice as shown.
- B. If you tear, deface or wrongly mark this ballot, return it to request a replacement.



**PARTISAN NOMINATIONS**

**US Senate**  
(You may vote for ONE)

- Daryl Farrow
- Justin E. Dues
- Roy Cooper
- Robert Colon
- Marcus W. Williams
- Orrick Quick

**US House of Representatives  
District 3**  
(You may vote for ONE)

- Raymond Smith
- Allison Jaslow

**NC Court of Appeals Judge  
Seat 3**  
(You may vote for ONE)

- James Weldon Whalen
- Christine Marie Walczyk

**End of Ballot**

SAMPLE BALLOT  
SAMPLE BALLOT  
SAMPLE BALLOT  
SAMPLE BALLOT  
SAMPLE BALLOT  
SAMPLE BALLOT  
SAMPLE BALLOT  
SAMPLE BALLOT  
SAMPLE BALLOT  
SAMPLE BALLOT  
SAMPLE BALLOT  
SAMPLE BALLOT

SAMPLE BALLOT  
SAMPLE BALLOT  
SAMPLE BALLOT  
SAMPLE BALLOT  
SAMPLE BALLOT  
SAMPLE BALLOT  
SAMPLE BALLOT  
SAMPLE BALLOT  
SAMPLE BALLOT  
SAMPLE BALLOT  
SAMPLE BALLOT  
SAMPLE BALLOT

Sample Ballot - Democratic Party Primary  
Wayne County, North Carolina  
March 3, 2026

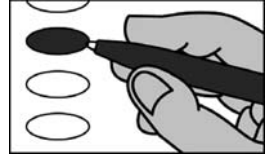
D0031



PCT: 16

**BALLOT MARKING INSTRUCTIONS**

- A. With the marking device provided or a black ball point pen, completely fill in the oval to the left of each candidate or selection of your choice as shown.
- B. If you tear, deface or wrongly mark this ballot, return it to request a replacement.



**PARTISAN NOMINATIONS**

**US Senate**  
(You may vote for ONE)

- Daryl Farrow
- Justin E. Dues
- Roy Cooper
- Robert Colon
- Marcus W. Williams
- Orrick Quick

**US House of Representatives District 3**  
(You may vote for ONE)

- Raymond Smith
- Allison Jaslow

**NC Court of Appeals Judge Seat 3**  
(You may vote for ONE)

- James Weldon Whalen
- Christine Marie Walczyk

**REFERENDUM**

**Wayne County Local Sales and Use Tax**

Local sales and use tax at the rate of one-quarter percent (0.25%) in addition to all other State and local sales and use taxes.

- For
- Against

**End of Ballot**

SAMPLE BALLOT  
SAMPLE BALLOT  
SAMPLE BALLOT  
SAMPLE BALLOT  
SAMPLE BALLOT  
SAMPLE BALLOT  
SAMPLE BALLOT  
SAMPLE BALLOT  
SAMPLE BALLOT  
SAMPLE BALLOT

SAMPLE BALLOT  
SAMPLE BALLOT  
SAMPLE BALLOT  
SAMPLE BALLOT  
SAMPLE BALLOT  
SAMPLE BALLOT  
SAMPLE BALLOT  
SAMPLE BALLOT  
SAMPLE BALLOT  
SAMPLE BALLOT

Sample Ballot - Democratic Party Primary  
Wayne County, North Carolina  
March 3, 2026

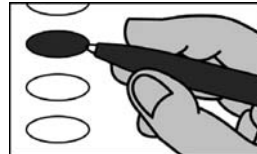
**D0032**



PCT: 16

**BALLOT MARKING INSTRUCTIONS**

- A. With the marking device provided or a black ball point pen, completely fill in the oval to the left of each candidate or selection of your choice as shown.
- B. If you tear, deface or wrongly mark this ballot, return it to request a replacement.



**PARTISAN NOMINATIONS**

**US Senate**  
(You may vote for ONE)

- Daryl Farrow
- Justin E. Dues
- Roy Cooper
- Robert Colon
- Marcus W. Williams
- Orrick Quick

**US House of Representatives  
District 3**  
(You may vote for ONE)

- Raymond Smith
- Allison Jaslow

**NC Court of Appeals Judge  
Seat 3**  
(You may vote for ONE)

- James Weldon Whalen
- Christine Marie Walczyk

**End of Ballot**

SAMPLE BALLOT  
SAMPLE BALLOT  
SAMPLE BALLOT  
SAMPLE BALLOT  
SAMPLE BALLOT  
SAMPLE BALLOT  
SAMPLE BALLOT  
SAMPLE BALLOT  
SAMPLE BALLOT  
SAMPLE BALLOT  
SAMPLE BALLOT  
SAMPLE BALLOT  
SAMPLE BALLOT  
SAMPLE BALLOT  
SAMPLE BALLOT  
SAMPLE BALLOT

SAMPLE BALLOT  
SAMPLE BALLOT  
SAMPLE BALLOT  
SAMPLE BALLOT  
SAMPLE BALLOT  
SAMPLE BALLOT  
SAMPLE BALLOT  
SAMPLE BALLOT  
SAMPLE BALLOT  
SAMPLE BALLOT  
SAMPLE BALLOT  
SAMPLE BALLOT  
SAMPLE BALLOT  
SAMPLE BALLOT  
SAMPLE BALLOT  
SAMPLE BALLOT



Sample Ballot - Democratic Party Primary  
Wayne County, North Carolina  
March 3, 2026

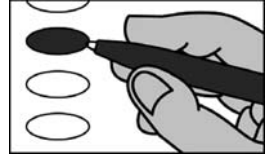
D0033



PCT: 17

**BALLOT MARKING INSTRUCTIONS**

- A. With the marking device provided or a black ball point pen, completely fill in the oval to the left of each candidate or selection of your choice as shown.
- B. If you tear, deface or wrongly mark this ballot, return it to request a replacement.



**PARTISAN NOMINATIONS**

**US Senate**  
(You may vote for ONE)

- Daryl Farrow
- Justin E. Dues
- Roy Cooper
- Robert Colon
- Marcus W. Williams
- Orrick Quick

**US House of Representatives  
District 3**  
(You may vote for ONE)

- Raymond Smith
- Allison Jaslow

**NC Court of Appeals Judge  
Seat 3**  
(You may vote for ONE)

- James Weldon Whalen
- Christine Marie Walczyk

**REFERENDUM**

**Wayne County  
Local Sales and Use Tax**

Local sales and use tax at the rate of one-quarter percent (0.25%) in addition to all other State and local sales and use taxes.

- For
- Against

**End of Ballot**

Sample Ballot - Democratic Party Primary  
 Wayne County, North Carolina  
 March 3, 2026

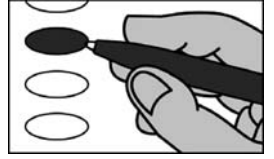
**D0034**



PCT: 17

**BALLOT MARKING INSTRUCTIONS**

- A. With the marking device provided or a black ball point pen, completely fill in the oval to the left of each candidate or selection of your choice as shown.
- B. If you tear, deface or wrongly mark this ballot, return it to request a replacement.



**PARTISAN NOMINATIONS**

**US Senate**  
 (You may vote for ONE)

- Daryl Farrow
- Justin E. Dues
- Roy Cooper
- Robert Colon
- Marcus W. Williams
- Orrick Quick

**US House of Representatives  
 District 3**  
 (You may vote for ONE)

- Raymond Smith
- Allison Jaslow

**NC Court of Appeals Judge  
 Seat 3**  
 (You may vote for ONE)

- James Weldon Whalen
- Christine Marie Walczyk

**End of Ballot**

SAMPLE BALLOT  
SAMPLE BALLOT  
SAMPLE BALLOT  
SAMPLE BALLOT  
SAMPLE BALLOT  
SAMPLE BALLOT  
SAMPLE BALLOT  
SAMPLE BALLOT  
SAMPLE BALLOT  
SAMPLE BALLOT  
SAMPLE BALLOT

SAMPLE BALLOT  
SAMPLE BALLOT  
SAMPLE BALLOT  
SAMPLE BALLOT  
SAMPLE BALLOT  
SAMPLE BALLOT  
SAMPLE BALLOT  
SAMPLE BALLOT  
SAMPLE BALLOT  
SAMPLE BALLOT  
SAMPLE BALLOT

Sample Ballot - Democratic Party Primary  
Wayne County, North Carolina  
March 3, 2026

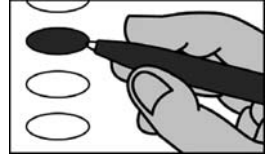
D0035



PCT: 18

**BALLOT MARKING INSTRUCTIONS**

- A. With the marking device provided or a black ball point pen, completely fill in the oval to the left of each candidate or selection of your choice as shown.
- B. If you tear, deface or wrongly mark this ballot, return it to request a replacement.



**PARTISAN NOMINATIONS**

**US Senate**  
(You may vote for ONE)

- Daryl Farrow
- Justin E. Dues
- Roy Cooper
- Robert Colon
- Marcus W. Williams
- Orrick Quick

**US House of Representatives  
District 3**  
(You may vote for ONE)

- Raymond Smith
- Allison Jaslow

**NC Court of Appeals Judge  
Seat 3**  
(You may vote for ONE)

- James Weldon Whalen
- Christine Marie Walczyk

**REFERENDUM**

**Wayne County  
Local Sales and Use Tax**

Local sales and use tax at the rate of one-quarter percent (0.25%) in addition to all other State and local sales and use taxes.

- For
- Against

**End of Ballot**

SAMPLE BALLOT  
SAMPLE BALLOT  
SAMPLE BALLOT  
SAMPLE BALLOT  
SAMPLE BALLOT  
SAMPLE BALLOT  
SAMPLE BALLOT  
SAMPLE BALLOT  
SAMPLE BALLOT  
SAMPLE BALLOT

SAMPLE BALLOT  
SAMPLE BALLOT  
SAMPLE BALLOT  
SAMPLE BALLOT  
SAMPLE BALLOT  
SAMPLE BALLOT  
SAMPLE BALLOT  
SAMPLE BALLOT  
SAMPLE BALLOT  
SAMPLE BALLOT

Sample Ballot - Democratic Party Primary  
Wayne County, North Carolina  
March 3, 2026

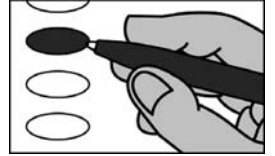
D0036



PCT: 18

**BALLOT MARKING INSTRUCTIONS**

- A. With the marking device provided or a black ball point pen, completely fill in the oval to the left of each candidate or selection of your choice as shown.
- B. If you tear, deface or wrongly mark this ballot, return it to request a replacement.



**PARTISAN NOMINATIONS**

**US Senate**  
(You may vote for ONE)

- Daryl Farrow
- Justin E. Dues
- Roy Cooper
- Robert Colon
- Marcus W. Williams
- Orrick Quick

**US House of Representatives  
District 3**  
(You may vote for ONE)

- Raymond Smith
- Allison Jaslow

**NC Court of Appeals Judge  
Seat 3**  
(You may vote for ONE)

- James Weldon Whalen
- Christine Marie Walczyk

**End of Ballot**

SAMPLE BALLOT  
SAMPLE BALLOT  
SAMPLE BALLOT  
SAMPLE BALLOT  
SAMPLE BALLOT  
SAMPLE BALLOT  
SAMPLE BALLOT  
SAMPLE BALLOT  
SAMPLE BALLOT  
SAMPLE BALLOT  
SAMPLE BALLOT

SAMPLE BALLOT  
SAMPLE BALLOT  
SAMPLE BALLOT  
SAMPLE BALLOT  
SAMPLE BALLOT  
SAMPLE BALLOT  
SAMPLE BALLOT  
SAMPLE BALLOT  
SAMPLE BALLOT  
SAMPLE BALLOT  
SAMPLE BALLOT



Sample Ballot - Democratic Party Primary  
Wayne County, North Carolina  
March 3, 2026

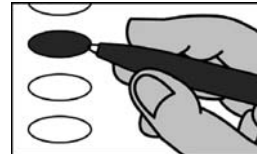
D0038



PCT: 1920

**BALLOT MARKING INSTRUCTIONS**

- A. With the marking device provided or a black ball point pen, completely fill in the oval to the left of each candidate or selection of your choice as shown.
- B. If you tear, deface or wrongly mark this ballot, return it to request a replacement.



<b>PARTISAN NOMINATIONS</b>	
<b>US Senate</b> (You may vote for ONE)	
<input type="radio"/>	Daryl Farrow
<input type="radio"/>	Justin E. Dues
<input type="radio"/>	Roy Cooper
<input type="radio"/>	Robert Colon
<input type="radio"/>	Marcus W. Williams
<input type="radio"/>	Orrick Quick
<b>US House of Representatives District 3</b> (You may vote for ONE)	
<input type="radio"/>	Raymond Smith
<input type="radio"/>	Allison Jaslow
<b>NC Court of Appeals Judge Seat 3</b> (You may vote for ONE)	
<input type="radio"/>	James Weldon Whalen
<input type="radio"/>	Christine Marie Walczyk
<b>End of Ballot</b>	

SAMPLE BALLOT

SAMPLE BALLOT

SAMPLE BALLOT

SAMPLE BALLOT

SAMPLE BALLOT

SAMPLE BALLOT

SAMPLE BALLOT

SAMPLE BALLOT

SAMPLE BALLOT

SAMPLE BALLOT

SAMPLE BALLOT

SAMPLE BALLOT

Sample Ballot - Democratic Party Primary  
Wayne County, North Carolina  
March 3, 2026

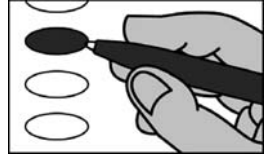
D0039



PCT: 21

**BALLOT MARKING INSTRUCTIONS**

- A. With the marking device provided or a black ball point pen, completely fill in the oval to the left of each candidate or selection of your choice as shown.
- B. If you tear, deface or wrongly mark this ballot, return it to request a replacement.



**PARTISAN NOMINATIONS**

**US Senate**  
(You may vote for ONE)

- Daryl Farrow
- Justin E. Dues
- Roy Cooper
- Robert Colon
- Marcus W. Williams
- Orrick Quick

**US House of Representatives  
District 3**  
(You may vote for ONE)

- Raymond Smith
- Allison Jaslow

**NC Court of Appeals Judge  
Seat 3**  
(You may vote for ONE)

- James Weldon Whalen
- Christine Marie Walczyk

**REFERENDUM**

**Wayne County  
Local Sales and Use Tax**

Local sales and use tax at the rate of one-quarter percent (0.25%) in addition to all other State and local sales and use taxes.

- For
- Against

**End of Ballot**

Sample Ballot - Democratic Party Primary  
Wayne County, North Carolina  
March 3, 2026

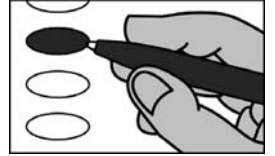
D0040



PCT: 21

**BALLOT MARKING INSTRUCTIONS**

- A. With the marking device provided or a black ball point pen, completely fill in the oval to the left of each candidate or selection of your choice as shown.
- B. If you tear, deface or wrongly mark this ballot, return it to request a replacement.



**PARTISAN NOMINATIONS**

**US Senate**  
(You may vote for ONE)

- Daryl Farrow
- Justin E. Dues
- Roy Cooper
- Robert Colon
- Marcus W. Williams
- Orrick Quick

**US House of Representatives  
District 3**  
(You may vote for ONE)

- Raymond Smith
- Allison Jaslow

**NC Court of Appeals Judge  
Seat 3**  
(You may vote for ONE)

- James Weldon Whalen
- Christine Marie Walczyk

**End of Ballot**

SAMPLE BALLOT  
SAMPLE BALLOT  
SAMPLE BALLOT  
SAMPLE BALLOT  
SAMPLE BALLOT  
SAMPLE BALLOT  
SAMPLE BALLOT  
SAMPLE BALLOT  
SAMPLE BALLOT  
SAMPLE BALLOT  
SAMPLE BALLOT

SAMPLE BALLOT  
SAMPLE BALLOT  
SAMPLE BALLOT  
SAMPLE BALLOT  
SAMPLE BALLOT  
SAMPLE BALLOT  
SAMPLE BALLOT  
SAMPLE BALLOT  
SAMPLE BALLOT  
SAMPLE BALLOT  
SAMPLE BALLOT



Sample Ballot - Democratic Party Primary  
Wayne County, North Carolina  
March 3, 2026

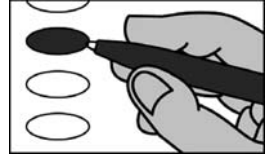
D0041



PCT: 22

**BALLOT MARKING INSTRUCTIONS**

- A. With the marking device provided or a black ball point pen, completely fill in the oval to the left of each candidate or selection of your choice as shown.
- B. If you tear, deface or wrongly mark this ballot, return it to request a replacement.



**PARTISAN NOMINATIONS**

**US Senate**  
(You may vote for ONE)

- Daryl Farrow
- Justin E. Dues
- Roy Cooper
- Robert Colon
- Marcus W. Williams
- Orrick Quick

**US House of Representatives  
District 3**  
(You may vote for ONE)

- Raymond Smith
- Allison Jaslow

**NC Court of Appeals Judge  
Seat 3**  
(You may vote for ONE)

- James Weldon Whalen
- Christine Marie Walczyk

**REFERENDUM**

**Wayne County  
Local Sales and Use Tax**

Local sales and use tax at the rate of one-quarter percent (0.25%) in addition to all other State and local sales and use taxes.

- For
- Against

**End of Ballot**

Sample Ballot - Democratic Party Primary  
Wayne County, North Carolina  
March 3, 2026

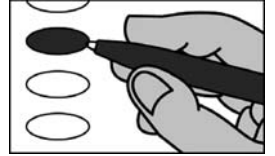
D0042



PCT: 22

**BALLOT MARKING INSTRUCTIONS**

- A. With the marking device provided or a black ball point pen, completely fill in the oval to the left of each candidate or selection of your choice as shown.
- B. If you tear, deface or wrongly mark this ballot, return it to request a replacement.



**PARTISAN NOMINATIONS**

**US Senate**  
(You may vote for ONE)

- Daryl Farrow
- Justin E. Dues
- Roy Cooper
- Robert Colon
- Marcus W. Williams
- Orrick Quick

**US House of Representatives  
District 3**  
(You may vote for ONE)

- Raymond Smith
- Allison Jaslow

**NC Court of Appeals Judge  
Seat 3**  
(You may vote for ONE)

- James Weldon Whalen
- Christine Marie Walczyk

**End of Ballot**

SAMPLE BALLOT  
SAMPLE BALLOT  
SAMPLE BALLOT  
SAMPLE BALLOT  
SAMPLE BALLOT  
SAMPLE BALLOT  
SAMPLE BALLOT  
SAMPLE BALLOT  
SAMPLE BALLOT  
SAMPLE BALLOT  
SAMPLE BALLOT

SAMPLE BALLOT  
SAMPLE BALLOT  
SAMPLE BALLOT  
SAMPLE BALLOT  
SAMPLE BALLOT  
SAMPLE BALLOT  
SAMPLE BALLOT  
SAMPLE BALLOT  
SAMPLE BALLOT  
SAMPLE BALLOT  
SAMPLE BALLOT

Sample Ballot - Democratic Party Primary  
Wayne County, North Carolina  
March 3, 2026

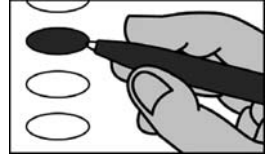
D0043



PCT: 23

**BALLOT MARKING INSTRUCTIONS**

- A. With the marking device provided or a black ball point pen, completely fill in the oval to the left of each candidate or selection of your choice as shown.
- B. If you tear, deface or wrongly mark this ballot, return it to request a replacement.



**PARTISAN NOMINATIONS**

**US Senate**  
(You may vote for ONE)

- Daryl Farrow
- Justin E. Dues
- Roy Cooper
- Robert Colon
- Marcus W. Williams
- Orrick Quick

**US House of Representatives District 3**  
(You may vote for ONE)

- Raymond Smith
- Allison Jaslow

**NC Court of Appeals Judge Seat 3**  
(You may vote for ONE)

- James Weldon Whalen
- Christine Marie Walczyk

**REFERENDUM**

**Wayne County Local Sales and Use Tax**

Local sales and use tax at the rate of one-quarter percent (0.25%) in addition to all other State and local sales and use taxes.

- For
- Against

**End of Ballot**

SAMPLE BALLOT  
SAMPLE BALLOT  
SAMPLE BALLOT  
SAMPLE BALLOT  
SAMPLE BALLOT  
SAMPLE BALLOT  
SAMPLE BALLOT  
SAMPLE BALLOT  
SAMPLE BALLOT  
SAMPLE BALLOT

SAMPLE BALLOT  
SAMPLE BALLOT  
SAMPLE BALLOT  
SAMPLE BALLOT  
SAMPLE BALLOT  
SAMPLE BALLOT  
SAMPLE BALLOT  
SAMPLE BALLOT  
SAMPLE BALLOT  
SAMPLE BALLOT

Sample Ballot - Democratic Party Primary  
Wayne County, North Carolina  
March 3, 2026

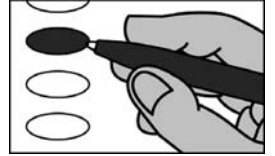
D0044



PCT: 23

**BALLOT MARKING INSTRUCTIONS**

- A. With the marking device provided or a black ball point pen, completely fill in the oval to the left of each candidate or selection of your choice as shown.
- B. If you tear, deface or wrongly mark this ballot, return it to request a replacement.



**PARTISAN NOMINATIONS**

**US Senate**  
(You may vote for ONE)

- Daryl Farrow
- Justin E. Dues
- Roy Cooper
- Robert Colon
- Marcus W. Williams
- Orrick Quick

**US House of Representatives  
District 3**  
(You may vote for ONE)

- Raymond Smith
- Allison Jaslow

**NC Court of Appeals Judge  
Seat 3**  
(You may vote for ONE)

- James Weldon Whalen
- Christine Marie Walczyk

**End of Ballot**

SAMPLE BALLOT  
SAMPLE BALLOT  
SAMPLE BALLOT  
SAMPLE BALLOT  
SAMPLE BALLOT  
SAMPLE BALLOT  
SAMPLE BALLOT  
SAMPLE BALLOT  
SAMPLE BALLOT  
SAMPLE BALLOT

SAMPLE BALLOT  
SAMPLE BALLOT  
SAMPLE BALLOT  
SAMPLE BALLOT  
SAMPLE BALLOT  
SAMPLE BALLOT  
SAMPLE BALLOT  
SAMPLE BALLOT  
SAMPLE BALLOT  
SAMPLE BALLOT

Sample Ballot - Democratic Party Primary  
Wayne County, North Carolina  
March 3, 2026

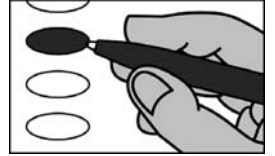
D0045



PCT: 24

**BALLOT MARKING INSTRUCTIONS**

- A. With the marking device provided or a black ball point pen, completely fill in the oval to the left of each candidate or selection of your choice as shown.
- B. If you tear, deface or wrongly mark this ballot, return it to request a replacement.



**PARTISAN NOMINATIONS**

**US Senate**  
(You may vote for ONE)

- Daryl Farrow
- Justin E. Dues
- Roy Cooper
- Robert Colon
- Marcus W. Williams
- Orrick Quick

**US House of Representatives  
District 3**  
(You may vote for ONE)

- Raymond Smith
- Allison Jaslow

**NC Court of Appeals Judge  
Seat 3**  
(You may vote for ONE)

- James Weldon Whalen
- Christine Marie Walczyk

**REFERENDUM**

**Wayne County  
Local Sales and Use Tax**

Local sales and use tax at the rate of one-quarter percent (0.25%) in addition to all other State and local sales and use taxes.

- For
- Against

**End of Ballot**

Sample Ballot - Democratic Party Primary  
Wayne County, North Carolina  
March 3, 2026

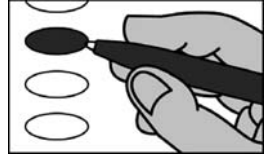
D0046



PCT: 24

**BALLOT MARKING INSTRUCTIONS**

- A. With the marking device provided or a black ball point pen, completely fill in the oval to the left of each candidate or selection of your choice as shown.
- B. If you tear, deface or wrongly mark this ballot, return it to request a replacement.



**PARTISAN NOMINATIONS**

**US Senate**  
(You may vote for ONE)

- Daryl Farrow
- Justin E. Dues
- Roy Cooper
- Robert Colon
- Marcus W. Williams
- Orrick Quick

**US House of Representatives  
District 3**  
(You may vote for ONE)

- Raymond Smith
- Allison Jaslow

**NC Court of Appeals Judge  
Seat 3**  
(You may vote for ONE)

- James Weldon Whalen
- Christine Marie Walczyk

**End of Ballot**

SAMPLE BALLOT  
SAMPLE BALLOT  
SAMPLE BALLOT  
SAMPLE BALLOT  
SAMPLE BALLOT  
SAMPLE BALLOT  
SAMPLE BALLOT  
SAMPLE BALLOT  
SAMPLE BALLOT  
SAMPLE BALLOT  
SAMPLE BALLOT

SAMPLE BALLOT  
SAMPLE BALLOT  
SAMPLE BALLOT  
SAMPLE BALLOT  
SAMPLE BALLOT  
SAMPLE BALLOT  
SAMPLE BALLOT  
SAMPLE BALLOT  
SAMPLE BALLOT  
SAMPLE BALLOT  
SAMPLE BALLOT

Sample Ballot - Democratic Party Primary  
Wayne County, North Carolina  
March 3, 2026

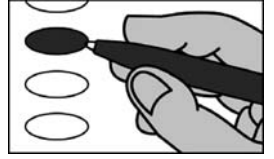
D0047



PCT: 2530

**BALLOT MARKING INSTRUCTIONS**

- A. With the marking device provided or a black ball point pen, completely fill in the oval to the left of each candidate or selection of your choice as shown.
- B. If you tear, deface or wrongly mark this ballot, return it to request a replacement.



**PARTISAN NOMINATIONS**

**US Senate**  
(You may vote for ONE)

- Daryl Farrow
- Justin E. Dues
- Roy Cooper
- Robert Colon
- Marcus W. Williams
- Orrick Quick

**US House of Representatives  
District 3**  
(You may vote for ONE)

- Raymond Smith
- Allison Jaslow

**NC Court of Appeals Judge  
Seat 3**  
(You may vote for ONE)

- James Weldon Whalen
- Christine Marie Walczyk

**REFERENDUM**

**Wayne County  
Local Sales and Use Tax**

Local sales and use tax at the rate of one-quarter percent (0.25%) in addition to all other State and local sales and use taxes.

- For
- Against

**End of Ballot**

Sample Ballot - Democratic Party Primary  
Wayne County, North Carolina  
March 3, 2026

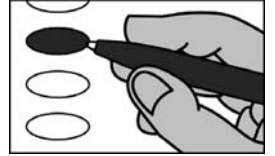
D0048



PCT: 2530

**BALLOT MARKING INSTRUCTIONS**

- A. With the marking device provided or a black ball point pen, completely fill in the oval to the left of each candidate or selection of your choice as shown.
- B. If you tear, deface or wrongly mark this ballot, return it to request a replacement.



**PARTISAN NOMINATIONS**

**US Senate**  
(You may vote for ONE)

- Daryl Farrow
- Justin E. Dues
- Roy Cooper
- Robert Colon
- Marcus W. Williams
- Orrick Quick

**US House of Representatives  
District 3**  
(You may vote for ONE)

- Raymond Smith
- Allison Jaslow

**NC Court of Appeals Judge  
Seat 3**  
(You may vote for ONE)

- James Weldon Whalen
- Christine Marie Walczyk

**End of Ballot**

SAMPLE BALLOT  
SAMPLE BALLOT  
SAMPLE BALLOT  
SAMPLE BALLOT  
SAMPLE BALLOT  
SAMPLE BALLOT  
SAMPLE BALLOT  
SAMPLE BALLOT  
SAMPLE BALLOT  
SAMPLE BALLOT  
SAMPLE BALLOT

SAMPLE BALLOT  
SAMPLE BALLOT  
SAMPLE BALLOT  
SAMPLE BALLOT  
SAMPLE BALLOT  
SAMPLE BALLOT  
SAMPLE BALLOT  
SAMPLE BALLOT  
SAMPLE BALLOT  
SAMPLE BALLOT  
SAMPLE BALLOT



Sample Ballot - Democratic Party Primary  
Wayne County, North Carolina  
March 3, 2026

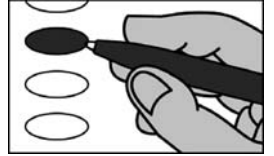
D0049



PCT: 26

**BALLOT MARKING INSTRUCTIONS**

- A. With the marking device provided or a black ball point pen, completely fill in the oval to the left of each candidate or selection of your choice as shown.
- B. If you tear, deface or wrongly mark this ballot, return it to request a replacement.



**PARTISAN NOMINATIONS**

**US Senate**  
(You may vote for ONE)

- Daryl Farrow
- Justin E. Dues
- Roy Cooper
- Robert Colon
- Marcus W. Williams
- Orrick Quick

**US House of Representatives  
District 3**  
(You may vote for ONE)

- Raymond Smith
- Allison Jaslow

**NC Court of Appeals Judge  
Seat 3**  
(You may vote for ONE)

- James Weldon Whalen
- Christine Marie Walczyk

**REFERENDUM**

**Wayne County  
Local Sales and Use Tax**

Local sales and use tax at the rate of one-quarter percent (0.25%) in addition to all other State and local sales and use taxes.

- For
- Against

**End of Ballot**

Sample Ballot - Democratic Party Primary  
Wayne County, North Carolina  
March 3, 2026

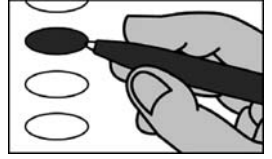
**D0050**



PCT: 26

**BALLOT MARKING INSTRUCTIONS**

- A. With the marking device provided or a black ball point pen, completely fill in the oval to the left of each candidate or selection of your choice as shown.
- B. If you tear, deface or wrongly mark this ballot, return it to request a replacement.



<b>PARTISAN NOMINATIONS</b>	
<b>US Senate</b> (You may vote for ONE)	
<input type="radio"/> Daryl Farrow <input type="radio"/> Justin E. Dues <input type="radio"/> Roy Cooper <input type="radio"/> Robert Colon <input type="radio"/> Marcus W. Williams <input type="radio"/> Orrick Quick	
<b>US House of Representatives District 3</b> (You may vote for ONE)	
<input type="radio"/> Raymond Smith <input type="radio"/> Allison Jaslow	
<b>NC Court of Appeals Judge Seat 3</b> (You may vote for ONE)	
<input type="radio"/> James Weldon Whalen <input type="radio"/> Christine Marie Walczyk	
<b>End of Ballot</b>	

SAMPLE BALLOT

SAMPLE BALLOT

Sample Ballot - Democratic Party Primary  
Wayne County, North Carolina  
March 3, 2026

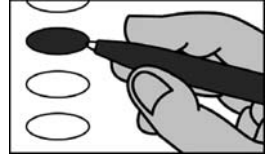
D0051



PCT: 27

**BALLOT MARKING INSTRUCTIONS**

- A. With the marking device provided or a black ball point pen, completely fill in the oval to the left of each candidate or selection of your choice as shown.
- B. If you tear, deface or wrongly mark this ballot, return it to request a replacement.



**PARTISAN NOMINATIONS**

**US Senate**  
(You may vote for ONE)

- Daryl Farrow
- Justin E. Dues
- Roy Cooper
- Robert Colon
- Marcus W. Williams
- Orrick Quick

**US House of Representatives  
District 3**  
(You may vote for ONE)

- Raymond Smith
- Allison Jaslow

**NC Court of Appeals Judge  
Seat 3**  
(You may vote for ONE)

- James Weldon Whalen
- Christine Marie Walczyk

**REFERENDUM**

**Wayne County  
Local Sales and Use Tax**

Local sales and use tax at the rate of one-quarter percent (0.25%) in addition to all other State and local sales and use taxes.

- For
- Against

**End of Ballot**

Sample Ballot - Democratic Party Primary  
Wayne County, North Carolina  
March 3, 2026

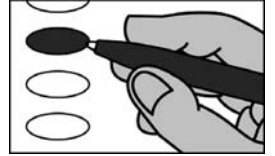
D0052



PCT: 27

**BALLOT MARKING INSTRUCTIONS**

- A. With the marking device provided or a black ball point pen, completely fill in the oval to the left of each candidate or selection of your choice as shown.
- B. If you tear, deface or wrongly mark this ballot, return it to request a replacement.



**PARTISAN NOMINATIONS**

**US Senate**  
(You may vote for ONE)

- Daryl Farrow
- Justin E. Dues
- Roy Cooper
- Robert Colon
- Marcus W. Williams
- Orrick Quick

**US House of Representatives  
District 3**  
(You may vote for ONE)

- Raymond Smith
- Allison Jaslow

**NC Court of Appeals Judge  
Seat 3**  
(You may vote for ONE)

- James Weldon Whalen
- Christine Marie Walczyk

**End of Ballot**

Sample Ballot - Democratic Party Primary  
Wayne County, North Carolina  
March 3, 2026

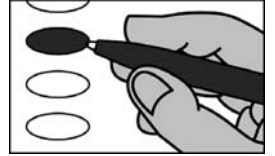
D0053



PCT: 28

**BALLOT MARKING INSTRUCTIONS**

- A. With the marking device provided or a black ball point pen, completely fill in the oval to the left of each candidate or selection of your choice as shown.
- B. If you tear, deface or wrongly mark this ballot, return it to request a replacement.



**PARTISAN NOMINATIONS**

**US Senate**  
(You may vote for ONE)

- Daryl Farrow
- Justin E. Dues
- Roy Cooper
- Robert Colon
- Marcus W. Williams
- Orrick Quick

**US House of Representatives  
District 3**  
(You may vote for ONE)

- Raymond Smith
- Allison Jaslow

**NC Court of Appeals Judge  
Seat 3**  
(You may vote for ONE)

- James Weldon Whalen
- Christine Marie Walczyk

**REFERENDUM**

**Wayne County  
Local Sales and Use Tax**

Local sales and use tax at the rate of one-quarter percent (0.25%) in addition to all other State and local sales and use taxes.

- For
- Against

**End of Ballot**

Sample Ballot - Democratic Party Primary  
Wayne County, North Carolina  
March 3, 2026

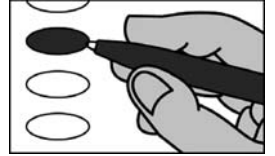
D0054



PCT: 28

**BALLOT MARKING INSTRUCTIONS**

- A. With the marking device provided or a black ball point pen, completely fill in the oval to the left of each candidate or selection of your choice as shown.
- B. If you tear, deface or wrongly mark this ballot, return it to request a replacement.



**PARTISAN NOMINATIONS**

**US Senate**  
(You may vote for ONE)

- Daryl Farrow
- Justin E. Dues
- Roy Cooper
- Robert Colon
- Marcus W. Williams
- Orrick Quick

**US House of Representatives  
District 3**  
(You may vote for ONE)

- Raymond Smith
- Allison Jaslow

**NC Court of Appeals Judge  
Seat 3**  
(You may vote for ONE)

- James Weldon Whalen
- Christine Marie Walczyk

**End of Ballot**

SAMPLE BALLOT  
SAMPLE BALLOT  
SAMPLE BALLOT  
SAMPLE BALLOT  
SAMPLE BALLOT  
SAMPLE BALLOT  
SAMPLE BALLOT  
SAMPLE BALLOT  
SAMPLE BALLOT  
SAMPLE BALLOT  
SAMPLE BALLOT

SAMPLE BALLOT  
SAMPLE BALLOT  
SAMPLE BALLOT  
SAMPLE BALLOT  
SAMPLE BALLOT  
SAMPLE BALLOT  
SAMPLE BALLOT  
SAMPLE BALLOT  
SAMPLE BALLOT  
SAMPLE BALLOT  
SAMPLE BALLOT

Sample Ballot - Democratic Party Primary  
Wayne County, North Carolina  
March 3, 2026

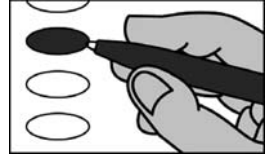
D0055



PCT: 29

**BALLOT MARKING INSTRUCTIONS**

- A. With the marking device provided or a black ball point pen, completely fill in the oval to the left of each candidate or selection of your choice as shown.
- B. If you tear, deface or wrongly mark this ballot, return it to request a replacement.



**PARTISAN NOMINATIONS**

**US Senate**  
(You may vote for ONE)

- Daryl Farrow
- Justin E. Dues
- Roy Cooper
- Robert Colon
- Marcus W. Williams
- Orrick Quick

**US House of Representatives  
District 3**  
(You may vote for ONE)

- Raymond Smith
- Allison Jaslow

**NC Court of Appeals Judge  
Seat 3**  
(You may vote for ONE)

- James Weldon Whalen
- Christine Marie Walczyk

**REFERENDUM**

**Wayne County  
Local Sales and Use Tax**

Local sales and use tax at the rate of one-quarter percent (0.25%) in addition to all other State and local sales and use taxes.

- For
- Against

**End of Ballot**

Sample Ballot - Democratic Party Primary  
Wayne County, North Carolina  
March 3, 2026

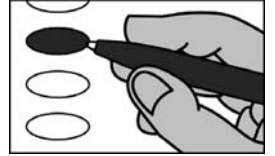
D0056



PCT: 29

**BALLOT MARKING INSTRUCTIONS**

- A. With the marking device provided or a black ball point pen, completely fill in the oval to the left of each candidate or selection of your choice as shown.
- B. If you tear, deface or wrongly mark this ballot, return it to request a replacement.



**PARTISAN NOMINATIONS**

**US Senate**  
(You may vote for ONE)

- Daryl Farrow
- Justin E. Dues
- Roy Cooper
- Robert Colon
- Marcus W. Williams
- Orrick Quick

**US House of Representatives  
District 3**  
(You may vote for ONE)

- Raymond Smith
- Allison Jaslow

**NC Court of Appeals Judge  
Seat 3**  
(You may vote for ONE)

- James Weldon Whalen
- Christine Marie Walczyk

**End of Ballot**

SAMPLE BALLOT  
SAMPLE BALLOT  
SAMPLE BALLOT  
SAMPLE BALLOT  
SAMPLE BALLOT  
SAMPLE BALLOT  
SAMPLE BALLOT  
SAMPLE BALLOT  
SAMPLE BALLOT  
SAMPLE BALLOT

SAMPLE BALLOT  
SAMPLE BALLOT  
SAMPLE BALLOT  
SAMPLE BALLOT  
SAMPLE BALLOT  
SAMPLE BALLOT  
SAMPLE BALLOT  
SAMPLE BALLOT  
SAMPLE BALLOT  
SAMPLE BALLOT



Sample Ballot - Republican Party Primary  
Wayne County, North Carolina  
March 3, 2026

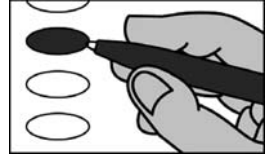
**R0057**



PCT: 01

**BALLOT MARKING INSTRUCTIONS**

- A. With the marking device provided or a black ball point pen, completely fill in the oval to the left of each candidate or selection of your choice as shown.
- B. If you tear, deface or wrongly mark this ballot, return it to request a replacement.



PARTISAN NOMINATIONS	REFERENDUM
<b>US Senate</b> (You may vote for ONE)	<b>Wayne County Local Sales and Use Tax</b>
<input type="radio"/> Margot Dupre <input type="radio"/> Richard Dansie <input type="radio"/> Donald M. (Don) Brown <input type="radio"/> Michael Whatley <input type="radio"/> Elizabeth A. Temple <input type="radio"/> Michele Morrow <input type="radio"/> Thomas Johnson	Local sales and use tax at the rate of one-quarter percent (0.25%) in addition to all other State and local sales and use taxes.  <input type="radio"/> For <input type="radio"/> Against
<b>End of Ballot</b>	
<b>NC Court of Appeals Judge Seat 1</b> (You may vote for ONE)	
<input type="radio"/> Michael C. Byrne <input type="radio"/> Matt Smith	
<b>District Attorney District 9</b> (You may vote for ONE)	
<input type="radio"/> Jeff Cannon <input type="radio"/> Mike Muskus	
<b>Wayne County Board of Commissioners At-Large</b> Unexpired term ending 2028 (You may vote for ONE)	
<input type="radio"/> Jennifer Smith Strickland <input type="radio"/> Kevin Johnson	
<b>Wayne County Sheriff</b> (You may vote for ONE)	
<input type="radio"/> Larry M. Pierce <input type="radio"/> Stephen (Stevie) Howell <input type="radio"/> Ricky Hooks	



Sample Ballot - Republican Party Primary  
Wayne County, North Carolina  
March 3, 2026

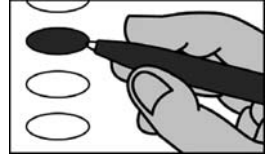
**R0059**



PCT: 02

**BALLOT MARKING INSTRUCTIONS**

- A. With the marking device provided or a black ball point pen, completely fill in the oval to the left of each candidate or selection of your choice as shown.
- B. If you tear, deface or wrongly mark this ballot, return it to request a replacement.



PARTISAN NOMINATIONS	REFERENDUM
<b>US Senate</b> (You may vote for ONE)	<b>Wayne County Local Sales and Use Tax</b>
<input type="radio"/> Margot Dupre <input type="radio"/> Richard Dansie <input type="radio"/> Donald M. (Don) Brown <input type="radio"/> Michael Whatley <input type="radio"/> Elizabeth A. Temple <input type="radio"/> Michele Morrow <input type="radio"/> Thomas Johnson	Local sales and use tax at the rate of one-quarter percent (0.25%) in addition to all other State and local sales and use taxes.  <input type="radio"/> For <input type="radio"/> Against
<b>End of Ballot</b>	
<b>NC Court of Appeals Judge Seat 1</b> (You may vote for ONE)	
<input type="radio"/> Michael C. Byrne <input type="radio"/> Matt Smith	
<b>District Attorney District 9</b> (You may vote for ONE)	
<input type="radio"/> Jeff Cannon <input type="radio"/> Mike Muskus	
<b>Wayne County Board of Commissioners At-Large</b> Unexpired term ending 2028 (You may vote for ONE)	
<input type="radio"/> Jennifer Smith Strickland <input type="radio"/> Kevin Johnson	
<b>Wayne County Sheriff</b> (You may vote for ONE)	
<input type="radio"/> Larry M. Pierce <input type="radio"/> Stephen (Stevie) Howell <input type="radio"/> Ricky Hooks	

Sample Ballot - Republican Party Primary  
Wayne County, North Carolina  
March 3, 2026

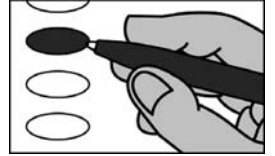
**R0060**



PCT: 02

**BALLOT MARKING INSTRUCTIONS**

- A. With the marking device provided or a black ball point pen, completely fill in the oval to the left of each candidate or selection of your choice as shown.
- B. If you tear, deface or wrongly mark this ballot, return it to request a replacement.



**PARTISAN NOMINATIONS**

**US Senate**  
(You may vote for ONE)

- Margot Dupre
- Richard Dansie
- Donald M. (Don) Brown
- Michael Whatley
- Elizabeth A. Temple
- Michele Morrow
- Thomas Johnson

**NC Court of Appeals Judge  
Seat 1**  
(You may vote for ONE)

- Michael C. Byrne
- Matt Smith

**District Attorney  
District 9**  
(You may vote for ONE)

- Jeff Cannon
- Mike Muskus

**Wayne County  
Board of Commissioners At-Large**  
Unexpired term ending 2028  
(You may vote for ONE)

- Jennifer Smith Strickland
- Kevin Johnson

**Wayne County  
Sheriff**  
(You may vote for ONE)

- Larry M. Pierce
- Stephen (Stevie) Howell
- Ricky Hooks

**End of Ballot**

SAMPLE BALLOT  
SAMPLE BALLOT  
SAMPLE BALLOT  
SAMPLE BALLOT  
SAMPLE BALLOT  
SAMPLE BALLOT  
SAMPLE BALLOT  
SAMPLE BALLOT  
SAMPLE BALLOT  
SAMPLE BALLOT

SAMPLE BALLOT  
SAMPLE BALLOT  
SAMPLE BALLOT  
SAMPLE BALLOT  
SAMPLE BALLOT  
SAMPLE BALLOT  
SAMPLE BALLOT  
SAMPLE BALLOT  
SAMPLE BALLOT  
SAMPLE BALLOT

Sample Ballot - Republican Party Primary  
Wayne County, North Carolina  
March 3, 2026

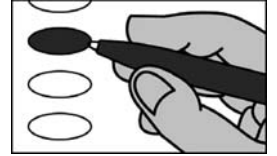
**R0061**



PCT: 03

**BALLOT MARKING INSTRUCTIONS**

- A. With the marking device provided or a black ball point pen, completely fill in the oval to the left of each candidate or selection of your choice as shown.
- B. If you tear, deface or wrongly mark this ballot, return it to request a replacement.



PARTISAN NOMINATIONS	REFERENDUM
<p align="center"><b>US Senate</b> (You may vote for ONE)</p>	<p align="center"><b>Wayne County Local Sales and Use Tax</b></p>
<ul style="list-style-type: none"> <li><input type="radio"/> Margot Dupre</li> <li><input type="radio"/> Richard Dansie</li> <li><input type="radio"/> Donald M. (Don) Brown</li> <li><input type="radio"/> Michael Whatley</li> <li><input type="radio"/> Elizabeth A. Temple</li> <li><input type="radio"/> Michele Morrow</li> <li><input type="radio"/> Thomas Johnson</li> </ul>	<p>Local sales and use tax at the rate of one-quarter percent (0.25%) in addition to all other State and local sales and use taxes.</p> <ul style="list-style-type: none"> <li><input type="radio"/> For</li> <li><input type="radio"/> Against</li> </ul>
<b>End of Ballot</b>	
<p align="center"><b>NC Court of Appeals Judge Seat 1</b> (You may vote for ONE)</p>	
<ul style="list-style-type: none"> <li><input type="radio"/> Michael C. Byrne</li> <li><input type="radio"/> Matt Smith</li> </ul>	
<p align="center"><b>District Attorney District 9</b> (You may vote for ONE)</p>	
<ul style="list-style-type: none"> <li><input type="radio"/> Jeff Cannon</li> <li><input type="radio"/> Mike Muskus</li> </ul>	
<p align="center"><b>Wayne County Board of Commissioners At-Large</b> Unexpired term ending 2028 (You may vote for ONE)</p>	
<ul style="list-style-type: none"> <li><input type="radio"/> Jennifer Smith Strickland</li> <li><input type="radio"/> Kevin Johnson</li> </ul>	
<p align="center"><b>Wayne County Sheriff</b> (You may vote for ONE)</p>	
<ul style="list-style-type: none"> <li><input type="radio"/> Larry M. Pierce</li> <li><input type="radio"/> Stephen (Stevie) Howell</li> <li><input type="radio"/> Ricky Hooks</li> </ul>	

Sample Ballot - Republican Party Primary  
Wayne County, North Carolina  
March 3, 2026

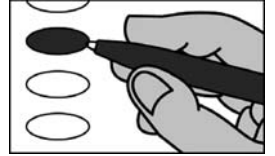
**R0062**



PCT: 03

**BALLOT MARKING INSTRUCTIONS**

- A. With the marking device provided or a black ball point pen, completely fill in the oval to the left of each candidate or selection of your choice as shown.
- B. If you tear, deface or wrongly mark this ballot, return it to request a replacement.



**PARTISAN NOMINATIONS**

**US Senate**  
(You may vote for ONE)

- Margot Dupre
- Richard Dansie
- Donald M. (Don) Brown
- Michael Whatley
- Elizabeth A. Temple
- Michele Morrow
- Thomas Johnson

**NC Court of Appeals Judge  
Seat 1**  
(You may vote for ONE)

- Michael C. Byrne
- Matt Smith

**District Attorney  
District 9**  
(You may vote for ONE)

- Jeff Cannon
- Mike Muskus

**Wayne County  
Board of Commissioners At-Large**  
Unexpired term ending 2028  
(You may vote for ONE)

- Jennifer Smith Strickland
- Kevin Johnson

**Wayne County  
Sheriff**  
(You may vote for ONE)

- Larry M. Pierce
- Stephen (Stevie) Howell
- Ricky Hooks

End of Ballot

SAMPLE BALLOT  
SAMPLE BALLOT  
SAMPLE BALLOT  
SAMPLE BALLOT  
SAMPLE BALLOT  
SAMPLE BALLOT  
SAMPLE BALLOT  
SAMPLE BALLOT  
SAMPLE BALLOT  
SAMPLE BALLOT

SAMPLE BALLOT  
SAMPLE BALLOT  
SAMPLE BALLOT  
SAMPLE BALLOT  
SAMPLE BALLOT  
SAMPLE BALLOT  
SAMPLE BALLOT  
SAMPLE BALLOT  
SAMPLE BALLOT  
SAMPLE BALLOT

Sample Ballot - Republican Party Primary  
Wayne County, North Carolina  
March 3, 2026

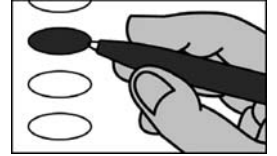
**R0063**



PCT: 04

**BALLOT MARKING INSTRUCTIONS**

- A. With the marking device provided or a black ball point pen, completely fill in the oval to the left of each candidate or selection of your choice as shown.
- B. If you tear, deface or wrongly mark this ballot, return it to request a replacement.



PARTISAN NOMINATIONS	REFERENDUM
<b>US Senate</b> (You may vote for ONE)	<b>Wayne County Local Sales and Use Tax</b>
<input type="radio"/> Margot Dupre <input type="radio"/> Richard Dansie <input type="radio"/> Donald M. (Don) Brown <input type="radio"/> Michael Whatley <input type="radio"/> Elizabeth A. Temple <input type="radio"/> Michele Morrow <input type="radio"/> Thomas Johnson	Local sales and use tax at the rate of one-quarter percent (0.25%) in addition to all other State and local sales and use taxes.  <input type="radio"/> For <input type="radio"/> Against
<b>End of Ballot</b>	
<b>NC Court of Appeals Judge Seat 1</b> (You may vote for ONE)	
<input type="radio"/> Michael C. Byrne <input type="radio"/> Matt Smith	
<b>District Attorney District 9</b> (You may vote for ONE)	
<input type="radio"/> Jeff Cannon <input type="radio"/> Mike Muskus	
<b>Wayne County Board of Commissioners At-Large</b> Unexpired term ending 2028 (You may vote for ONE)	
<input type="radio"/> Jennifer Smith Strickland <input type="radio"/> Kevin Johnson	
<b>Wayne County Sheriff</b> (You may vote for ONE)	
<input type="radio"/> Larry M. Pierce <input type="radio"/> Stephen (Stevie) Howell <input type="radio"/> Ricky Hooks	

Sample Ballot - Republican Party Primary  
 Wayne County, North Carolina  
 March 3, 2026

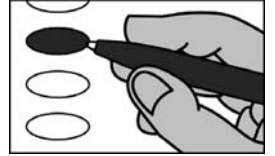
**R0064**



PCT: 04

**BALLOT MARKING INSTRUCTIONS**

- A. With the marking device provided or a black ball point pen, completely fill in the oval to the left of each candidate or selection of your choice as shown.
- B. If you tear, deface or wrongly mark this ballot, return it to request a replacement.



**PARTISAN NOMINATIONS**

**US Senate**  
 (You may vote for ONE)

- Margot Dupre
- Richard Dansie
- Donald M. (Don) Brown
- Michael Whatley
- Elizabeth A. Temple
- Michele Morrow
- Thomas Johnson

**NC Court of Appeals Judge  
 Seat 1**  
 (You may vote for ONE)

- Michael C. Byrne
- Matt Smith

**District Attorney  
 District 9**  
 (You may vote for ONE)

- Jeff Cannon
- Mike Muskus

**Wayne County  
 Board of Commissioners At-Large**  
 Unexpired term ending 2028  
 (You may vote for ONE)

- Jennifer Smith Strickland
- Kevin Johnson

**Wayne County  
 Sheriff**  
 (You may vote for ONE)

- Larry M. Pierce
- Stephen (Stevie) Howell
- Ricky Hooks

**End of Ballot**

SAMPLE BALLOT  
SAMPLE BALLOT  
SAMPLE BALLOT  
SAMPLE BALLOT  
SAMPLE BALLOT  
SAMPLE BALLOT  
SAMPLE BALLOT  
SAMPLE BALLOT  
SAMPLE BALLOT  
SAMPLE BALLOT  
SAMPLE BALLOT

SAMPLE BALLOT  
SAMPLE BALLOT  
SAMPLE BALLOT  
SAMPLE BALLOT  
SAMPLE BALLOT  
SAMPLE BALLOT  
SAMPLE BALLOT  
SAMPLE BALLOT  
SAMPLE BALLOT  
SAMPLE BALLOT  
SAMPLE BALLOT



Sample Ballot - Republican Party Primary  
Wayne County, North Carolina  
March 3, 2026

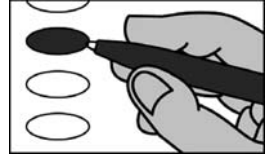
**R0065**



PCT: 05

**BALLOT MARKING INSTRUCTIONS**

- A. With the marking device provided or a black ball point pen, completely fill in the oval to the left of each candidate or selection of your choice as shown.
- B. If you tear, deface or wrongly mark this ballot, return it to request a replacement.



PARTISAN NOMINATIONS	REFERENDUM
<b>US Senate</b> (You may vote for ONE)	<b>Wayne County Local Sales and Use Tax</b>
<input type="radio"/> Margot Dupre <input type="radio"/> Richard Dansie <input type="radio"/> Donald M. (Don) Brown <input type="radio"/> Michael Whatley <input type="radio"/> Elizabeth A. Temple <input type="radio"/> Michele Morrow <input type="radio"/> Thomas Johnson	Local sales and use tax at the rate of one-quarter percent (0.25%) in addition to all other State and local sales and use taxes.  <input type="radio"/> For <input type="radio"/> Against
<b>End of Ballot</b>	
<b>NC Court of Appeals Judge Seat 1</b> (You may vote for ONE)	
<input type="radio"/> Michael C. Byrne <input type="radio"/> Matt Smith	
<b>District Attorney District 9</b> (You may vote for ONE)	
<input type="radio"/> Jeff Cannon <input type="radio"/> Mike Muskus	
<b>Wayne County Board of Commissioners At-Large</b> Unexpired term ending 2028 (You may vote for ONE)	
<input type="radio"/> Jennifer Smith Strickland <input type="radio"/> Kevin Johnson	
<b>Wayne County Sheriff</b> (You may vote for ONE)	
<input type="radio"/> Larry M. Pierce <input type="radio"/> Stephen (Stevie) Howell <input type="radio"/> Ricky Hooks	



Sample Ballot - Republican Party Primary  
Wayne County, North Carolina  
March 3, 2026

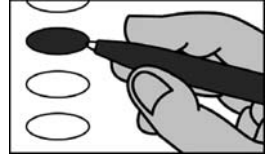
**R0067**



PCT: 06

**BALLOT MARKING INSTRUCTIONS**

- A. With the marking device provided or a black ball point pen, completely fill in the oval to the left of each candidate or selection of your choice as shown.
- B. If you tear, deface or wrongly mark this ballot, return it to request a replacement.



PARTISAN NOMINATIONS	REFERENDUM
<p align="center"><b>US Senate</b> (You may vote for ONE)</p>	<p align="center"><b>Wayne County Local Sales and Use Tax</b></p>
<ul style="list-style-type: none"> <li><input type="radio"/> Margot Dupre</li> <li><input type="radio"/> Richard Dansie</li> <li><input type="radio"/> Donald M. (Don) Brown</li> <li><input type="radio"/> Michael Whatley</li> <li><input type="radio"/> Elizabeth A. Temple</li> <li><input type="radio"/> Michele Morrow</li> <li><input type="radio"/> Thomas Johnson</li> </ul>	<p>Local sales and use tax at the rate of one-quarter percent (0.25%) in addition to all other State and local sales and use taxes.</p> <ul style="list-style-type: none"> <li><input type="radio"/> For</li> <li><input type="radio"/> Against</li> </ul>
<b>End of Ballot</b>	
<p align="center"><b>NC Court of Appeals Judge Seat 1</b> (You may vote for ONE)</p>	
<ul style="list-style-type: none"> <li><input type="radio"/> Michael C. Byrne</li> <li><input type="radio"/> Matt Smith</li> </ul>	
<p align="center"><b>District Attorney District 9</b> (You may vote for ONE)</p>	
<ul style="list-style-type: none"> <li><input type="radio"/> Jeff Cannon</li> <li><input type="radio"/> Mike Muskus</li> </ul>	
<p align="center"><b>Wayne County Board of Commissioners At-Large</b> Unexpired term ending 2028 (You may vote for ONE)</p>	
<ul style="list-style-type: none"> <li><input type="radio"/> Jennifer Smith Strickland</li> <li><input type="radio"/> Kevin Johnson</li> </ul>	
<p align="center"><b>Wayne County Sheriff</b> (You may vote for ONE)</p>	
<ul style="list-style-type: none"> <li><input type="radio"/> Larry M. Pierce</li> <li><input type="radio"/> Stephen (Stevie) Howell</li> <li><input type="radio"/> Ricky Hooks</li> </ul>	

Sample Ballot - Republican Party Primary  
Wayne County, North Carolina  
March 3, 2026

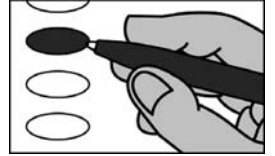
R0068



PCT: 06

**BALLOT MARKING INSTRUCTIONS**

- A. With the marking device provided or a black ball point pen, completely fill in the oval to the left of each candidate or selection of your choice as shown.
- B. If you tear, deface or wrongly mark this ballot, return it to request a replacement.



**PARTISAN NOMINATIONS**

**US Senate**  
(You may vote for ONE)

- Margot Dupre
- Richard Dansie
- Donald M. (Don) Brown
- Michael Whatley
- Elizabeth A. Temple
- Michele Morrow
- Thomas Johnson

**NC Court of Appeals Judge  
Seat 1**  
(You may vote for ONE)

- Michael C. Byrne
- Matt Smith

**District Attorney  
District 9**  
(You may vote for ONE)

- Jeff Cannon
- Mike Muskus

**Wayne County  
Board of Commissioners At-Large**  
Unexpired term ending 2028  
(You may vote for ONE)

- Jennifer Smith Strickland
- Kevin Johnson

**Wayne County  
Sheriff**  
(You may vote for ONE)

- Larry M. Pierce
- Stephen (Stevie) Howell
- Ricky Hooks

End of Ballot

SAMPLE BALLOT  
SAMPLE BALLOT  
SAMPLE BALLOT  
SAMPLE BALLOT  
SAMPLE BALLOT  
SAMPLE BALLOT  
SAMPLE BALLOT  
SAMPLE BALLOT  
SAMPLE BALLOT  
SAMPLE BALLOT

SAMPLE BALLOT  
SAMPLE BALLOT  
SAMPLE BALLOT  
SAMPLE BALLOT  
SAMPLE BALLOT  
SAMPLE BALLOT  
SAMPLE BALLOT  
SAMPLE BALLOT  
SAMPLE BALLOT  
SAMPLE BALLOT

Sample Ballot - Republican Party Primary  
Wayne County, North Carolina  
March 3, 2026

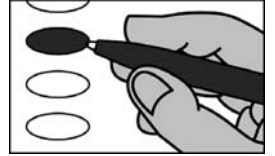
**R0069**



PCT: 07

**BALLOT MARKING INSTRUCTIONS**

- A. With the marking device provided or a black ball point pen, completely fill in the oval to the left of each candidate or selection of your choice as shown.
- B. If you tear, deface or wrongly mark this ballot, return it to request a replacement.



PARTISAN NOMINATIONS	REFERENDUM
<b>US Senate</b> (You may vote for ONE)	<b>Wayne County Local Sales and Use Tax</b>
<input type="radio"/> Margot Dupre <input type="radio"/> Richard Dansie <input type="radio"/> Donald M. (Don) Brown <input type="radio"/> Michael Whatley <input type="radio"/> Elizabeth A. Temple <input type="radio"/> Michele Morrow <input type="radio"/> Thomas Johnson	Local sales and use tax at the rate of one-quarter percent (0.25%) in addition to all other State and local sales and use taxes.  <input type="radio"/> For <input type="radio"/> Against
	<b>End of Ballot</b>
<b>NC Court of Appeals Judge Seat 1</b> (You may vote for ONE)	
<input type="radio"/> Michael C. Byrne <input type="radio"/> Matt Smith	
<b>District Attorney District 9</b> (You may vote for ONE)	
<input type="radio"/> Jeff Cannon <input type="radio"/> Mike Muskus	
<b>Wayne County Board of Commissioners At-Large</b> Unexpired term ending 2028 (You may vote for ONE)	
<input type="radio"/> Jennifer Smith Strickland <input type="radio"/> Kevin Johnson	
<b>Wayne County Sheriff</b> (You may vote for ONE)	
<input type="radio"/> Larry M. Pierce <input type="radio"/> Stephen (Stevie) Howell <input type="radio"/> Ricky Hooks	



Sample Ballot - Republican Party Primary  
Wayne County, North Carolina  
March 3, 2026

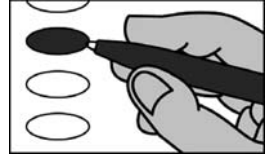
**R0071**



PCT: 08

**BALLOT MARKING INSTRUCTIONS**

- A. With the marking device provided or a black ball point pen, completely fill in the oval to the left of each candidate or selection of your choice as shown.
- B. If you tear, deface or wrongly mark this ballot, return it to request a replacement.



PARTISAN NOMINATIONS	REFERENDUM
<p align="center"><b>US Senate</b> (You may vote for ONE)</p>	<p align="center"><b>Wayne County Local Sales and Use Tax</b></p>
<ul style="list-style-type: none"> <li><input type="radio"/> Margot Dupre</li> <li><input type="radio"/> Richard Dansie</li> <li><input type="radio"/> Donald M. (Don) Brown</li> <li><input type="radio"/> Michael Whatley</li> <li><input type="radio"/> Elizabeth A. Temple</li> <li><input type="radio"/> Michele Morrow</li> <li><input type="radio"/> Thomas Johnson</li> </ul>	<p>Local sales and use tax at the rate of one-quarter percent (0.25%) in addition to all other State and local sales and use taxes.</p> <ul style="list-style-type: none"> <li><input type="radio"/> For</li> <li><input type="radio"/> Against</li> </ul>
<b>End of Ballot</b>	
<p align="center"><b>NC Court of Appeals Judge Seat 1</b> (You may vote for ONE)</p>	
<ul style="list-style-type: none"> <li><input type="radio"/> Michael C. Byrne</li> <li><input type="radio"/> Matt Smith</li> </ul>	
<p align="center"><b>District Attorney District 9</b> (You may vote for ONE)</p>	
<ul style="list-style-type: none"> <li><input type="radio"/> Jeff Cannon</li> <li><input type="radio"/> Mike Muskus</li> </ul>	
<p align="center"><b>Wayne County Board of Commissioners At-Large</b> Unexpired term ending 2028 (You may vote for ONE)</p>	
<ul style="list-style-type: none"> <li><input type="radio"/> Jennifer Smith Strickland</li> <li><input type="radio"/> Kevin Johnson</li> </ul>	
<p align="center"><b>Wayne County Sheriff</b> (You may vote for ONE)</p>	
<ul style="list-style-type: none"> <li><input type="radio"/> Larry M. Pierce</li> <li><input type="radio"/> Stephen (Stevie) Howell</li> <li><input type="radio"/> Ricky Hooks</li> </ul>	

Sample Ballot - Republican Party Primary  
Wayne County, North Carolina  
March 3, 2026

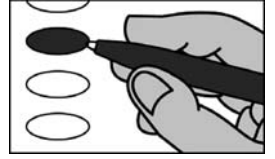
**R0072**



PCT: 08

**BALLOT MARKING INSTRUCTIONS**

- A. With the marking device provided or a black ball point pen, completely fill in the oval to the left of each candidate or selection of your choice as shown.
- B. If you tear, deface or wrongly mark this ballot, return it to request a replacement.



<b>PARTISAN NOMINATIONS</b>
<b>US Senate</b> (You may vote for ONE)
<input type="radio"/> Margot Dupre <input type="radio"/> Richard Dansie <input type="radio"/> Donald M. (Don) Brown <input type="radio"/> Michael Whatley <input type="radio"/> Elizabeth A. Temple <input type="radio"/> Michele Morrow <input type="radio"/> Thomas Johnson
<b>NC Court of Appeals Judge Seat 1</b> (You may vote for ONE)
<input type="radio"/> Michael C. Byrne <input type="radio"/> Matt Smith
<b>District Attorney District 9</b> (You may vote for ONE)
<input type="radio"/> Jeff Cannon <input type="radio"/> Mike Muskus
<b>Wayne County Board of Commissioners At-Large</b> Unexpired term ending 2028 (You may vote for ONE)
<input type="radio"/> Jennifer Smith Strickland <input type="radio"/> Kevin Johnson
<b>Wayne County Sheriff</b> (You may vote for ONE)
<input type="radio"/> Larry M. Pierce <input type="radio"/> Stephen (Stevie) Howell <input type="radio"/> Ricky Hooks
<b>End of Ballot</b>

SAMPLE BALLOT

SAMPLE BALLOT



Sample Ballot - Republican Party Primary  
Wayne County, North Carolina  
March 3, 2026

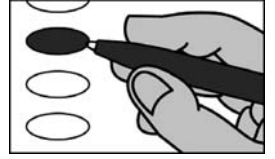
**R0073**



PCT: 09

**BALLOT MARKING INSTRUCTIONS**

- A. With the marking device provided or a black ball point pen, completely fill in the oval to the left of each candidate or selection of your choice as shown.
- B. If you tear, deface or wrongly mark this ballot, return it to request a replacement.



PARTISAN NOMINATIONS	REFERENDUM
<p align="center"><b>US Senate</b> (You may vote for ONE)</p>	<p align="center"><b>Wayne County Local Sales and Use Tax</b></p>
<ul style="list-style-type: none"> <li><input type="radio"/> Margot Dupre</li> <li><input type="radio"/> Richard Dansie</li> <li><input type="radio"/> Donald M. (Don) Brown</li> <li><input type="radio"/> Michael Whatley</li> <li><input type="radio"/> Elizabeth A. Temple</li> <li><input type="radio"/> Michele Morrow</li> <li><input type="radio"/> Thomas Johnson</li> </ul>	<p>Local sales and use tax at the rate of one-quarter percent (0.25%) in addition to all other State and local sales and use taxes.</p> <ul style="list-style-type: none"> <li><input type="radio"/> For</li> <li><input type="radio"/> Against</li> </ul>
<b>End of Ballot</b>	
<p align="center"><b>NC Court of Appeals Judge Seat 1</b> (You may vote for ONE)</p>	
<ul style="list-style-type: none"> <li><input type="radio"/> Michael C. Byrne</li> <li><input type="radio"/> Matt Smith</li> </ul>	
<p align="center"><b>District Attorney District 9</b> (You may vote for ONE)</p>	
<ul style="list-style-type: none"> <li><input type="radio"/> Jeff Cannon</li> <li><input type="radio"/> Mike Muskus</li> </ul>	
<p align="center"><b>Wayne County Board of Commissioners At-Large</b> Unexpired term ending 2028 (You may vote for ONE)</p>	
<ul style="list-style-type: none"> <li><input type="radio"/> Jennifer Smith Strickland</li> <li><input type="radio"/> Kevin Johnson</li> </ul>	
<p align="center"><b>Wayne County Sheriff</b> (You may vote for ONE)</p>	
<ul style="list-style-type: none"> <li><input type="radio"/> Larry M. Pierce</li> <li><input type="radio"/> Stephen (Stevie) Howell</li> <li><input type="radio"/> Ricky Hooks</li> </ul>	



Sample Ballot - Republican Party Primary  
Wayne County, North Carolina  
March 3, 2026

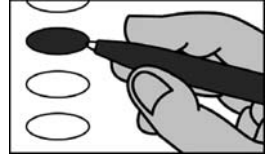
**R0075**



PCT: 10

**BALLOT MARKING INSTRUCTIONS**

- A. With the marking device provided or a black ball point pen, completely fill in the oval to the left of each candidate or selection of your choice as shown.
- B. If you tear, deface or wrongly mark this ballot, return it to request a replacement.



PARTISAN NOMINATIONS	REFERENDUM
<p align="center"><b>US Senate</b> (You may vote for ONE)</p>	<p align="center"><b>Wayne County Local Sales and Use Tax</b></p>
<ul style="list-style-type: none"> <li><input type="radio"/> Margot Dupre</li> <li><input type="radio"/> Richard Dansie</li> <li><input type="radio"/> Donald M. (Don) Brown</li> <li><input type="radio"/> Michael Whatley</li> <li><input type="radio"/> Elizabeth A. Temple</li> <li><input type="radio"/> Michele Morrow</li> <li><input type="radio"/> Thomas Johnson</li> </ul>	<p>Local sales and use tax at the rate of one-quarter percent (0.25%) in addition to all other State and local sales and use taxes.</p> <ul style="list-style-type: none"> <li><input type="radio"/> For</li> <li><input type="radio"/> Against</li> </ul>
<b>End of Ballot</b>	
<p align="center"><b>NC Court of Appeals Judge Seat 1</b> (You may vote for ONE)</p>	
<ul style="list-style-type: none"> <li><input type="radio"/> Michael C. Byrne</li> <li><input type="radio"/> Matt Smith</li> </ul>	
<p align="center"><b>District Attorney District 9</b> (You may vote for ONE)</p>	
<ul style="list-style-type: none"> <li><input type="radio"/> Jeff Cannon</li> <li><input type="radio"/> Mike Muskus</li> </ul>	
<p align="center"><b>Wayne County Board of Commissioners At-Large</b> Unexpired term ending 2028 (You may vote for ONE)</p>	
<ul style="list-style-type: none"> <li><input type="radio"/> Jennifer Smith Strickland</li> <li><input type="radio"/> Kevin Johnson</li> </ul>	
<p align="center"><b>Wayne County Sheriff</b> (You may vote for ONE)</p>	
<ul style="list-style-type: none"> <li><input type="radio"/> Larry M. Pierce</li> <li><input type="radio"/> Stephen (Stevie) Howell</li> <li><input type="radio"/> Ricky Hooks</li> </ul>	

Sample Ballot - Republican Party Primary  
Wayne County, North Carolina  
March 3, 2026

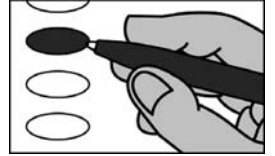
**R0076**



PCT: 10

**BALLOT MARKING INSTRUCTIONS**

- A. With the marking device provided or a black ball point pen, completely fill in the oval to the left of each candidate or selection of your choice as shown.
- B. If you tear, deface or wrongly mark this ballot, return it to request a replacement.



**PARTISAN NOMINATIONS**

**US Senate**  
(You may vote for ONE)

- Margot Dupre
- Richard Dansie
- Donald M. (Don) Brown
- Michael Whatley
- Elizabeth A. Temple
- Michele Morrow
- Thomas Johnson

**NC Court of Appeals Judge  
Seat 1**  
(You may vote for ONE)

- Michael C. Byrne
- Matt Smith

**District Attorney  
District 9**  
(You may vote for ONE)

- Jeff Cannon
- Mike Muskus

**Wayne County  
Board of Commissioners At-Large**  
Unexpired term ending 2028  
(You may vote for ONE)

- Jennifer Smith Strickland
- Kevin Johnson

**Wayne County  
Sheriff**  
(You may vote for ONE)

- Larry M. Pierce
- Stephen (Stevie) Howell
- Ricky Hooks

**End of Ballot**

SAMPLE BALLOT  
SAMPLE BALLOT  
SAMPLE BALLOT  
SAMPLE BALLOT  
SAMPLE BALLOT  
SAMPLE BALLOT  
SAMPLE BALLOT  
SAMPLE BALLOT  
SAMPLE BALLOT  
SAMPLE BALLOT

SAMPLE BALLOT  
SAMPLE BALLOT  
SAMPLE BALLOT  
SAMPLE BALLOT  
SAMPLE BALLOT  
SAMPLE BALLOT  
SAMPLE BALLOT  
SAMPLE BALLOT  
SAMPLE BALLOT  
SAMPLE BALLOT

Sample Ballot - Republican Party Primary  
Wayne County, North Carolina  
March 3, 2026

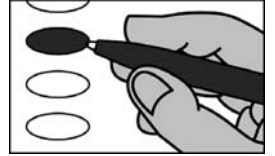
**R0077**



PCT: 11

**BALLOT MARKING INSTRUCTIONS**

- A. With the marking device provided or a black ball point pen, completely fill in the oval to the left of each candidate or selection of your choice as shown.
- B. If you tear, deface or wrongly mark this ballot, return it to request a replacement.



PARTISAN NOMINATIONS	REFERENDUM
<b>US Senate</b> (You may vote for ONE)	<b>Wayne County Local Sales and Use Tax</b>
<input type="radio"/> Margot Dupre <input type="radio"/> Richard Dansie <input type="radio"/> Donald M. (Don) Brown <input type="radio"/> Michael Whatley <input type="radio"/> Elizabeth A. Temple <input type="radio"/> Michele Morrow <input type="radio"/> Thomas Johnson	Local sales and use tax at the rate of one-quarter percent (0.25%) in addition to all other State and local sales and use taxes.  <input type="radio"/> For <input type="radio"/> Against
<b>End of Ballot</b>	
<b>NC Court of Appeals Judge Seat 1</b> (You may vote for ONE)	
<input type="radio"/> Michael C. Byrne <input type="radio"/> Matt Smith	
<b>District Attorney District 9</b> (You may vote for ONE)	
<input type="radio"/> Jeff Cannon <input type="radio"/> Mike Muskus	
<b>Wayne County Board of Commissioners At-Large</b> Unexpired term ending 2028 (You may vote for ONE)	
<input type="radio"/> Jennifer Smith Strickland <input type="radio"/> Kevin Johnson	
<b>Wayne County Sheriff</b> (You may vote for ONE)	
<input type="radio"/> Larry M. Pierce <input type="radio"/> Stephen (Stevie) Howell <input type="radio"/> Ricky Hooks	



Sample Ballot - Republican Party Primary  
Wayne County, North Carolina  
March 3, 2026

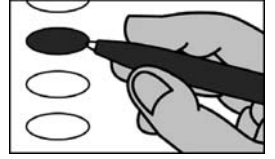
**R0079**



PCT: 12

**BALLOT MARKING INSTRUCTIONS**

- A. With the marking device provided or a black ball point pen, completely fill in the oval to the left of each candidate or selection of your choice as shown.  
B. If you tear, deface or wrongly mark this ballot, return it to request a replacement.



PARTISAN NOMINATIONS	REFERENDUM
<p><b>US Senate</b> (You may vote for ONE)</p>	<p><b>Wayne County Local Sales and Use Tax</b></p>
<p><input type="radio"/> Margot Dupre</p> <p><input type="radio"/> Richard Dansie</p> <p><input type="radio"/> Donald M. (Don) Brown</p> <p><input type="radio"/> Michael Whatley</p> <p><input type="radio"/> Elizabeth A. Temple</p> <p><input type="radio"/> Michele Morrow</p> <p><input type="radio"/> Thomas Johnson</p>	<p>Local sales and use tax at the rate of one-quarter percent (0.25%) in addition to all other State and local sales and use taxes.</p> <p><input type="radio"/> For</p> <p><input type="radio"/> Against</p>
<p><b>NC Court of Appeals Judge Seat 1</b> (You may vote for ONE)</p>	<p><b>End of Ballot</b></p>
<p><input type="radio"/> Michael C. Byrne</p> <p><input type="radio"/> Matt Smith</p>	
<p><b>District Attorney District 9</b> (You may vote for ONE)</p>	
<p><input type="radio"/> Jeff Cannon</p> <p><input type="radio"/> Mike Muskus</p>	
<p><b>Wayne County Board of Commissioners At-Large</b> Unexpired term ending 2028 (You may vote for ONE)</p>	
<p><input type="radio"/> Jennifer Smith Strickland</p> <p><input type="radio"/> Kevin Johnson</p>	
<p><b>Wayne County Sheriff</b> (You may vote for ONE)</p>	
<p><input type="radio"/> Larry M. Pierce</p> <p><input type="radio"/> Stephen (Stevie) Howell</p> <p><input type="radio"/> Ricky Hooks</p>	





Sample Ballot - Republican Party Primary  
Wayne County, North Carolina  
March 3, 2026

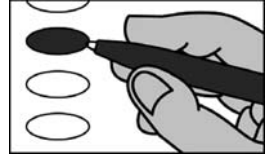
**R0081**



PCT: 13

**BALLOT MARKING INSTRUCTIONS**

- A. With the marking device provided or a black ball point pen, completely fill in the oval to the left of each candidate or selection of your choice as shown.
- B. If you tear, deface or wrongly mark this ballot, return it to request a replacement.



PARTISAN NOMINATIONS	REFERENDUM
<p align="center"><b>US Senate</b> (You may vote for ONE)</p>	<p align="center"><b>Wayne County Local Sales and Use Tax</b></p>
<ul style="list-style-type: none"> <li><input type="radio"/> Margot Dupre</li> <li><input type="radio"/> Richard Dansie</li> <li><input type="radio"/> Donald M. (Don) Brown</li> <li><input type="radio"/> Michael Whatley</li> <li><input type="radio"/> Elizabeth A. Temple</li> <li><input type="radio"/> Michele Morrow</li> <li><input type="radio"/> Thomas Johnson</li> </ul>	<p>Local sales and use tax at the rate of one-quarter percent (0.25%) in addition to all other State and local sales and use taxes.</p> <ul style="list-style-type: none"> <li><input type="radio"/> For</li> <li><input type="radio"/> Against</li> </ul>
<b>End of Ballot</b>	
<p align="center"><b>NC Court of Appeals Judge Seat 1</b> (You may vote for ONE)</p>	
<ul style="list-style-type: none"> <li><input type="radio"/> Michael C. Byrne</li> <li><input type="radio"/> Matt Smith</li> </ul>	
<p align="center"><b>District Attorney District 9</b> (You may vote for ONE)</p>	
<ul style="list-style-type: none"> <li><input type="radio"/> Jeff Cannon</li> <li><input type="radio"/> Mike Muskus</li> </ul>	
<p align="center"><b>Wayne County Board of Commissioners At-Large</b> Unexpired term ending 2028 (You may vote for ONE)</p>	
<ul style="list-style-type: none"> <li><input type="radio"/> Jennifer Smith Strickland</li> <li><input type="radio"/> Kevin Johnson</li> </ul>	
<p align="center"><b>Wayne County Sheriff</b> (You may vote for ONE)</p>	
<ul style="list-style-type: none"> <li><input type="radio"/> Larry M. Pierce</li> <li><input type="radio"/> Stephen (Stevie) Howell</li> <li><input type="radio"/> Ricky Hooks</li> </ul>	



Sample Ballot - Republican Party Primary  
Wayne County, North Carolina  
March 3, 2026

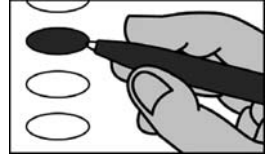
**R0083**



PCT: 14

**BALLOT MARKING INSTRUCTIONS**

- A. With the marking device provided or a black ball point pen, completely fill in the oval to the left of each candidate or selection of your choice as shown.  
B. If you tear, deface or wrongly mark this ballot, return it to request a replacement.



PARTISAN NOMINATIONS	REFERENDUM
<b>US Senate</b> (You may vote for ONE)	<b>Wayne County Local Sales and Use Tax</b>
<input type="radio"/> Margot Dupre <input type="radio"/> Richard Dansie <input type="radio"/> Donald M. (Don) Brown <input type="radio"/> Michael Whatley <input type="radio"/> Elizabeth A. Temple <input type="radio"/> Michele Morrow <input type="radio"/> Thomas Johnson	Local sales and use tax at the rate of one-quarter percent (0.25%) in addition to all other State and local sales and use taxes.  <input type="radio"/> For <input type="radio"/> Against
<b>End of Ballot</b>	
<b>NC Court of Appeals Judge Seat 1</b> (You may vote for ONE)	
<input type="radio"/> Michael C. Byrne <input type="radio"/> Matt Smith	
<b>District Attorney District 9</b> (You may vote for ONE)	
<input type="radio"/> Jeff Cannon <input type="radio"/> Mike Muskus	
<b>Wayne County Board of Commissioners At-Large</b> Unexpired term ending 2028 (You may vote for ONE)	
<input type="radio"/> Jennifer Smith Strickland <input type="radio"/> Kevin Johnson	
<b>Wayne County Sheriff</b> (You may vote for ONE)	
<input type="radio"/> Larry M. Pierce <input type="radio"/> Stephen (Stevie) Howell <input type="radio"/> Ricky Hooks	

Sample Ballot - Republican Party Primary  
Wayne County, North Carolina  
March 3, 2026

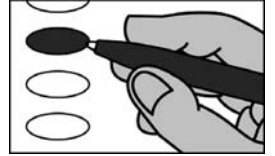
R0084



PCT: 14

**BALLOT MARKING INSTRUCTIONS**

- A. With the marking device provided or a black ball point pen, completely fill in the oval to the left of each candidate or selection of your choice as shown.
- B. If you tear, deface or wrongly mark this ballot, return it to request a replacement.



**PARTISAN NOMINATIONS**

**US Senate**  
(You may vote for ONE)

- Margot Dupre
- Richard Dansie
- Donald M. (Don) Brown
- Michael Whatley
- Elizabeth A. Temple
- Michele Morrow
- Thomas Johnson

**NC Court of Appeals Judge  
Seat 1**  
(You may vote for ONE)

- Michael C. Byrne
- Matt Smith

**District Attorney  
District 9**  
(You may vote for ONE)

- Jeff Cannon
- Mike Muskus

**Wayne County  
Board of Commissioners At-Large**  
Unexpired term ending 2028  
(You may vote for ONE)

- Jennifer Smith Strickland
- Kevin Johnson

**Wayne County  
Sheriff**  
(You may vote for ONE)

- Larry M. Pierce
- Stephen (Stevie) Howell
- Ricky Hooks

End of Ballot

SAMPLE BALLOT  
SAMPLE BALLOT  
SAMPLE BALLOT  
SAMPLE BALLOT  
SAMPLE BALLOT  
SAMPLE BALLOT  
SAMPLE BALLOT  
SAMPLE BALLOT  
SAMPLE BALLOT  
SAMPLE BALLOT

SAMPLE BALLOT  
SAMPLE BALLOT  
SAMPLE BALLOT  
SAMPLE BALLOT  
SAMPLE BALLOT  
SAMPLE BALLOT  
SAMPLE BALLOT  
SAMPLE BALLOT  
SAMPLE BALLOT  
SAMPLE BALLOT

Sample Ballot - Republican Party Primary  
Wayne County, North Carolina  
March 3, 2026

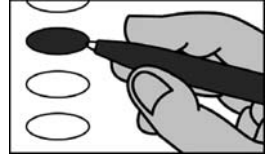
**R0085**



PCT: 15

**BALLOT MARKING INSTRUCTIONS**

- A. With the marking device provided or a black ball point pen, completely fill in the oval to the left of each candidate or selection of your choice as shown.
- B. If you tear, deface or wrongly mark this ballot, return it to request a replacement.



PARTISAN NOMINATIONS	REFERENDUM
<b>US Senate</b> (You may vote for ONE)	<b>Wayne County Local Sales and Use Tax</b>
<input type="radio"/> Margot Dupre <input type="radio"/> Richard Dansie <input type="radio"/> Donald M. (Don) Brown <input type="radio"/> Michael Whatley <input type="radio"/> Elizabeth A. Temple <input type="radio"/> Michele Morrow <input type="radio"/> Thomas Johnson	Local sales and use tax at the rate of one-quarter percent (0.25%) in addition to all other State and local sales and use taxes.  <input type="radio"/> For <input type="radio"/> Against
<b>End of Ballot</b>	
<b>NC Court of Appeals Judge Seat 1</b> (You may vote for ONE)	
<input type="radio"/> Michael C. Byrne <input type="radio"/> Matt Smith	
<b>District Attorney District 9</b> (You may vote for ONE)	
<input type="radio"/> Jeff Cannon <input type="radio"/> Mike Muskus	
<b>Wayne County Board of Commissioners At-Large</b> Unexpired term ending 2028 (You may vote for ONE)	
<input type="radio"/> Jennifer Smith Strickland <input type="radio"/> Kevin Johnson	
<b>Wayne County Sheriff</b> (You may vote for ONE)	
<input type="radio"/> Larry M. Pierce <input type="radio"/> Stephen (Stevie) Howell <input type="radio"/> Ricky Hooks	

Sample Ballot - Republican Party Primary  
Wayne County, North Carolina  
March 3, 2026

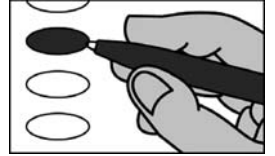
**R0086**



PCT: 15

**BALLOT MARKING INSTRUCTIONS**

- A. With the marking device provided or a black ball point pen, completely fill in the oval to the left of each candidate or selection of your choice as shown.
- B. If you tear, deface or wrongly mark this ballot, return it to request a replacement.



**PARTISAN NOMINATIONS**

**US Senate**  
(You may vote for ONE)

- Margot Dupre
- Richard Dansie
- Donald M. (Don) Brown
- Michael Whatley
- Elizabeth A. Temple
- Michele Morrow
- Thomas Johnson

**NC Court of Appeals Judge  
Seat 1**  
(You may vote for ONE)

- Michael C. Byrne
- Matt Smith

**District Attorney  
District 9**  
(You may vote for ONE)

- Jeff Cannon
- Mike Muskus

**Wayne County  
Board of Commissioners At-Large**  
Unexpired term ending 2028  
(You may vote for ONE)

- Jennifer Smith Strickland
- Kevin Johnson

**Wayne County  
Sheriff**  
(You may vote for ONE)

- Larry M. Pierce
- Stephen (Stevie) Howell
- Ricky Hooks

End of Ballot

SAMPLE BALLOT  
SAMPLE BALLOT  
SAMPLE BALLOT  
SAMPLE BALLOT  
SAMPLE BALLOT  
SAMPLE BALLOT  
SAMPLE BALLOT  
SAMPLE BALLOT  
SAMPLE BALLOT  
SAMPLE BALLOT

SAMPLE BALLOT  
SAMPLE BALLOT  
SAMPLE BALLOT  
SAMPLE BALLOT  
SAMPLE BALLOT  
SAMPLE BALLOT  
SAMPLE BALLOT  
SAMPLE BALLOT  
SAMPLE BALLOT  
SAMPLE BALLOT

Sample Ballot - Republican Party Primary  
Wayne County, North Carolina  
March 3, 2026

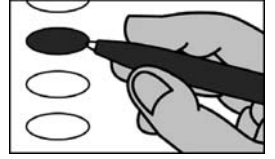
**R0087**



PCT: 15

**BALLOT MARKING INSTRUCTIONS**

- A. With the marking device provided or a black ball point pen, completely fill in the oval to the left of each candidate or selection of your choice as shown.
- B. If you tear, deface or wrongly mark this ballot, return it to request a replacement.



<b>PARTISAN NOMINATIONS</b>	<b>Wayne County Sheriff</b> (You may vote for ONE)
<b>US Senate</b> (You may vote for ONE)	<input type="radio"/> <b>Larry M. Pierce</b> <input type="radio"/> <b>Stephen (Stevie) Howell</b> <input type="radio"/> <b>Ricky Hooks</b>
<input type="radio"/> <b>Margot Dupre</b> <input type="radio"/> <b>Richard Dansie</b> <input type="radio"/> <b>Donald M. (Don) Brown</b> <input type="radio"/> <b>Michael Whatley</b> <input type="radio"/> <b>Elizabeth A. Temple</b> <input type="radio"/> <b>Michele Morrow</b> <input type="radio"/> <b>Thomas Johnson</b>	<b>REFERENDUM</b>
	<b>Wayne County Local Sales and Use Tax</b>
	Local sales and use tax at the rate of one-quarter percent (0.25%) in addition to all other State and local sales and use taxes.  <input type="radio"/> <b>For</b> <input type="radio"/> <b>Against</b>
<b>NC Court of Appeals Judge Seat 1</b> (You may vote for ONE)	<b>End of Ballot</b>
<input type="radio"/> <b>Michael C. Byrne</b> <input type="radio"/> <b>Matt Smith</b>	
<b>NC House of Representatives District 4</b> (You may vote for ONE)	
<input type="radio"/> <b>Jimmy Dixon</b> <input type="radio"/> <b>Marcella Barbour</b>	
<b>District Attorney District 9</b> (You may vote for ONE)	
<input type="radio"/> <b>Jeff Cannon</b> <input type="radio"/> <b>Mike Muskus</b>	
<b>Wayne County Board of Commissioners At-Large</b> Unexpired term ending 2028 (You may vote for ONE)	
<input type="radio"/> <b>Jennifer Smith Strickland</b> <input type="radio"/> <b>Kevin Johnson</b>	

Sample Ballot - Republican Party Primary  
Wayne County, North Carolina  
March 3, 2026

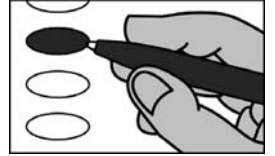
**R0088**



PCT: 15

**BALLOT MARKING INSTRUCTIONS**

- A. With the marking device provided or a black ball point pen, completely fill in the oval to the left of each candidate or selection of your choice as shown.
- B. If you tear, deface or wrongly mark this ballot, return it to request a replacement.



<b>PARTISAN NOMINATIONS</b>	<b>Wayne County Sheriff</b> (You may vote for ONE)
<b>US Senate</b> (You may vote for ONE)	<input type="radio"/> <b>Larry M. Pierce</b> <input type="radio"/> <b>Stephen (Stevie) Howell</b> <input type="radio"/> <b>Ricky Hooks</b>
<input type="radio"/> <b>Margot Dupre</b> <input type="radio"/> <b>Richard Dansie</b> <input type="radio"/> <b>Donald M. (Don) Brown</b> <input type="radio"/> <b>Michael Whatley</b> <input type="radio"/> <b>Elizabeth A. Temple</b> <input type="radio"/> <b>Michele Morrow</b> <input type="radio"/> <b>Thomas Johnson</b>	<b>End of Ballot</b>
<b>NC Court of Appeals Judge Seat 1</b> (You may vote for ONE)	
<input type="radio"/> <b>Michael C. Byrne</b> <input type="radio"/> <b>Matt Smith</b>	
<b>NC House of Representatives District 4</b> (You may vote for ONE)	
<input type="radio"/> <b>Jimmy Dixon</b> <input type="radio"/> <b>Marcella Barbour</b>	
<b>District Attorney District 9</b> (You may vote for ONE)	
<input type="radio"/> <b>Jeff Cannon</b> <input type="radio"/> <b>Mike Muskus</b>	
<b>Wayne County Board of Commissioners At-Large</b> Unexpired term ending 2028 (You may vote for ONE)	
<input type="radio"/> <b>Jennifer Smith Strickland</b> <input type="radio"/> <b>Kevin Johnson</b>	

SAMPLE BALLOT

SAMPLE BALLOT



Sample Ballot - Republican Party Primary  
Wayne County, North Carolina  
March 3, 2026

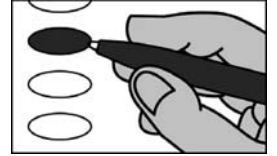
**R0089**



PCT: 16

**BALLOT MARKING INSTRUCTIONS**

- A. With the marking device provided or a black ball point pen, completely fill in the oval to the left of each candidate or selection of your choice as shown.
- B. If you tear, deface or wrongly mark this ballot, return it to request a replacement.



<b>PARTISAN NOMINATIONS</b>	<b>Wayne County Sheriff</b> (You may vote for ONE)
<b>US Senate</b> (You may vote for ONE)	<input type="radio"/> <b>Larry M. Pierce</b> <input type="radio"/> <b>Stephen (Stevie) Howell</b> <input type="radio"/> <b>Ricky Hooks</b>
<input type="radio"/> <b>Margot Dupre</b> <input type="radio"/> <b>Richard Dansie</b> <input type="radio"/> <b>Donald M. (Don) Brown</b> <input type="radio"/> <b>Michael Whatley</b> <input type="radio"/> <b>Elizabeth A. Temple</b> <input type="radio"/> <b>Michele Morrow</b> <input type="radio"/> <b>Thomas Johnson</b>	<b>REFERENDUM</b>
	<b>Wayne County Local Sales and Use Tax</b>
	Local sales and use tax at the rate of one-quarter percent (0.25%) in addition to all other State and local sales and use taxes.  <input type="radio"/> <b>For</b> <input type="radio"/> <b>Against</b>
<b>NC Court of Appeals Judge Seat 1</b> (You may vote for ONE)	<b>End of Ballot</b>
<input type="radio"/> <b>Michael C. Byrne</b> <input type="radio"/> <b>Matt Smith</b>	
<b>NC House of Representatives District 4</b> (You may vote for ONE)	
<input type="radio"/> <b>Jimmy Dixon</b> <input type="radio"/> <b>Marcella Barbour</b>	
<b>District Attorney District 9</b> (You may vote for ONE)	
<input type="radio"/> <b>Jeff Cannon</b> <input type="radio"/> <b>Mike Muskus</b>	
<b>Wayne County Board of Commissioners At-Large</b> Unexpired term ending 2028 (You may vote for ONE)	
<input type="radio"/> <b>Jennifer Smith Strickland</b> <input type="radio"/> <b>Kevin Johnson</b>	

Sample Ballot - Republican Party Primary  
Wayne County, North Carolina  
March 3, 2026

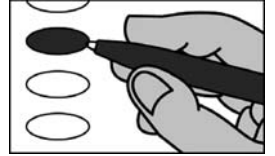
**R0090**



PCT: 16

**BALLOT MARKING INSTRUCTIONS**

- A. With the marking device provided or a black ball point pen, completely fill in the oval to the left of each candidate or selection of your choice as shown.
- B. If you tear, deface or wrongly mark this ballot, return it to request a replacement.



<b>PARTISAN NOMINATIONS</b>	<b>Wayne County Sheriff</b> (You may vote for ONE)
<b>US Senate</b> (You may vote for ONE)	<input type="radio"/> <b>Larry M. Pierce</b> <input type="radio"/> <b>Stephen (Stevie) Howell</b> <input type="radio"/> <b>Ricky Hooks</b>
<input type="radio"/> <b>Margot Dupre</b> <input type="radio"/> <b>Richard Dansie</b> <input type="radio"/> <b>Donald M. (Don) Brown</b> <input type="radio"/> <b>Michael Whatley</b> <input type="radio"/> <b>Elizabeth A. Temple</b> <input type="radio"/> <b>Michele Morrow</b> <input type="radio"/> <b>Thomas Johnson</b>	<b>End of Ballot</b>
<b>NC Court of Appeals Judge Seat 1</b> (You may vote for ONE)	
<input type="radio"/> <b>Michael C. Byrne</b> <input type="radio"/> <b>Matt Smith</b>	
<b>NC House of Representatives District 4</b> (You may vote for ONE)	
<input type="radio"/> <b>Jimmy Dixon</b> <input type="radio"/> <b>Marcella Barbour</b>	
<b>District Attorney District 9</b> (You may vote for ONE)	
<input type="radio"/> <b>Jeff Cannon</b> <input type="radio"/> <b>Mike Muskus</b>	
<b>Wayne County Board of Commissioners At-Large</b> Unexpired term ending 2028 (You may vote for ONE)	
<input type="radio"/> <b>Jennifer Smith Strickland</b> <input type="radio"/> <b>Kevin Johnson</b>	

SAMPLE BALLOT

SAMPLE BALLOT

Sample Ballot - Republican Party Primary  
Wayne County, North Carolina  
March 3, 2026

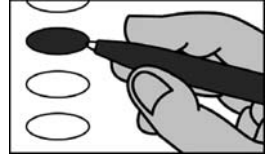
**R0091**



PCT: 17

**BALLOT MARKING INSTRUCTIONS**

- A. With the marking device provided or a black ball point pen, completely fill in the oval to the left of each candidate or selection of your choice as shown.
- B. If you tear, deface or wrongly mark this ballot, return it to request a replacement.



<b>PARTISAN NOMINATIONS</b>	<b>Wayne County Sheriff</b> (You may vote for ONE)
<b>US Senate</b> (You may vote for ONE)	<input type="radio"/> <b>Larry M. Pierce</b>  <input type="radio"/> <b>Stephen (Stevie) Howell</b>  <input type="radio"/> <b>Ricky Hooks</b>
<input type="radio"/> <b>Margot Dupre</b>  <input type="radio"/> <b>Richard Dansie</b>  <input type="radio"/> <b>Donald M. (Don) Brown</b>  <input type="radio"/> <b>Michael Whatley</b>  <input type="radio"/> <b>Elizabeth A. Temple</b>  <input type="radio"/> <b>Michele Morrow</b>  <input type="radio"/> <b>Thomas Johnson</b>	<b>REFERENDUM</b>
<b>NC Court of Appeals Judge Seat 1</b> (You may vote for ONE)	<b>Wayne County Local Sales and Use Tax</b>
<input type="radio"/> <b>Michael C. Byrne</b>  <input type="radio"/> <b>Matt Smith</b>	Local sales and use tax at the rate of one-quarter percent (0.25%) in addition to all other State and local sales and use taxes.  <input type="radio"/> <b>For</b>  <input type="radio"/> <b>Against</b>
<b>NC House of Representatives District 4</b> (You may vote for ONE)	<b>End of Ballot</b>
<input type="radio"/> <b>Jimmy Dixon</b>  <input type="radio"/> <b>Marcella Barbour</b>	
<b>District Attorney District 9</b> (You may vote for ONE)	
<input type="radio"/> <b>Jeff Cannon</b>  <input type="radio"/> <b>Mike Muskus</b>	
<b>Wayne County Board of Commissioners At-Large</b> Unexpired term ending 2028 (You may vote for ONE)	
<input type="radio"/> <b>Jennifer Smith Strickland</b>  <input type="radio"/> <b>Kevin Johnson</b>	

Sample Ballot - Republican Party Primary  
Wayne County, North Carolina  
March 3, 2026

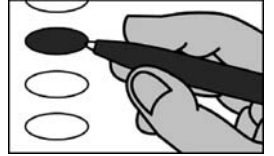
**R0092**



PCT: 17

**BALLOT MARKING INSTRUCTIONS**

- A. With the marking device provided or a black ball point pen, completely fill in the oval to the left of each candidate or selection of your choice as shown.
- B. If you tear, deface or wrongly mark this ballot, return it to request a replacement.



<b>PARTISAN NOMINATIONS</b>	<b>Wayne County Sheriff</b> (You may vote for ONE)
<b>US Senate</b> (You may vote for ONE)	<input type="radio"/> <b>Larry M. Pierce</b>  <input type="radio"/> <b>Stephen (Stevie) Howell</b>  <input type="radio"/> <b>Ricky Hooks</b>
<input type="radio"/> <b>Margot Dupre</b>  <input type="radio"/> <b>Richard Dansie</b>  <input type="radio"/> <b>Donald M. (Don) Brown</b>  <input type="radio"/> <b>Michael Whatley</b>  <input type="radio"/> <b>Elizabeth A. Temple</b>  <input type="radio"/> <b>Michele Morrow</b>  <input type="radio"/> <b>Thomas Johnson</b>	<b>End of Ballot</b>
<b>NC Court of Appeals Judge Seat 1</b> (You may vote for ONE)	
<input type="radio"/> <b>Michael C. Byrne</b>  <input type="radio"/> <b>Matt Smith</b>	
<b>NC House of Representatives District 4</b> (You may vote for ONE)	
<input type="radio"/> <b>Jimmy Dixon</b>  <input type="radio"/> <b>Marcella Barbour</b>	
<b>District Attorney District 9</b> (You may vote for ONE)	
<input type="radio"/> <b>Jeff Cannon</b>  <input type="radio"/> <b>Mike Muskus</b>	
<b>Wayne County Board of Commissioners At-Large</b> Unexpired term ending 2028 (You may vote for ONE)	
<input type="radio"/> <b>Jennifer Smith Strickland</b>  <input type="radio"/> <b>Kevin Johnson</b>	

SAMPLE BALLOT

SAMPLE BALLOT

Sample Ballot - Republican Party Primary  
Wayne County, North Carolina  
March 3, 2026

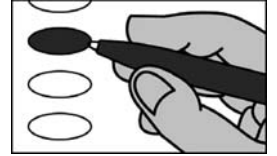
**R0093**



PCT: 18

**BALLOT MARKING INSTRUCTIONS**

- A. With the marking device provided or a black ball point pen, completely fill in the oval to the left of each candidate or selection of your choice as shown.
- B. If you tear, deface or wrongly mark this ballot, return it to request a replacement.



PARTISAN NOMINATIONS	REFERENDUM
<b>US Senate</b> (You may vote for ONE)	<b>Wayne County Local Sales and Use Tax</b>
<input type="radio"/> Margot Dupre <input type="radio"/> Richard Dansie <input type="radio"/> Donald M. (Don) Brown <input type="radio"/> Michael Whatley <input type="radio"/> Elizabeth A. Temple <input type="radio"/> Michele Morrow <input type="radio"/> Thomas Johnson	Local sales and use tax at the rate of one-quarter percent (0.25%) in addition to all other State and local sales and use taxes.  <input type="radio"/> For <input type="radio"/> Against
<b>End of Ballot</b>	
<b>NC Court of Appeals Judge Seat 1</b> (You may vote for ONE)	
<input type="radio"/> Michael C. Byrne <input type="radio"/> Matt Smith	
<b>District Attorney District 9</b> (You may vote for ONE)	
<input type="radio"/> Jeff Cannon <input type="radio"/> Mike Muskus	
<b>Wayne County Board of Commissioners At-Large</b> Unexpired term ending 2028 (You may vote for ONE)	
<input type="radio"/> Jennifer Smith Strickland <input type="radio"/> Kevin Johnson	
<b>Wayne County Sheriff</b> (You may vote for ONE)	
<input type="radio"/> Larry M. Pierce <input type="radio"/> Stephen (Stevie) Howell <input type="radio"/> Ricky Hooks	



Sample Ballot - Republican Party Primary  
Wayne County, North Carolina  
March 3, 2026

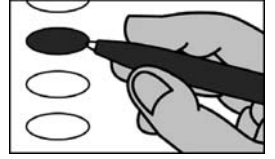
**R0095**



PCT: 1920

**BALLOT MARKING INSTRUCTIONS**

- A. With the marking device provided or a black ball point pen, completely fill in the oval to the left of each candidate or selection of your choice as shown.
- B. If you tear, deface or wrongly mark this ballot, return it to request a replacement.



PARTISAN NOMINATIONS	REFERENDUM
<p align="center"><b>US Senate</b> (You may vote for ONE)</p>	<p align="center"><b>Wayne County Local Sales and Use Tax</b></p>
<ul style="list-style-type: none"> <li><input type="radio"/> Margot Dupre</li> <li><input type="radio"/> Richard Dansie</li> <li><input type="radio"/> Donald M. (Don) Brown</li> <li><input type="radio"/> Michael Whatley</li> <li><input type="radio"/> Elizabeth A. Temple</li> <li><input type="radio"/> Michele Morrow</li> <li><input type="radio"/> Thomas Johnson</li> </ul>	<p>Local sales and use tax at the rate of one-quarter percent (0.25%) in addition to all other State and local sales and use taxes.</p> <ul style="list-style-type: none"> <li><input type="radio"/> For</li> <li><input type="radio"/> Against</li> </ul>
<b>End of Ballot</b>	
<p align="center"><b>NC Court of Appeals Judge Seat 1</b> (You may vote for ONE)</p>	
<ul style="list-style-type: none"> <li><input type="radio"/> Michael C. Byrne</li> <li><input type="radio"/> Matt Smith</li> </ul>	
<p align="center"><b>District Attorney District 9</b> (You may vote for ONE)</p>	
<ul style="list-style-type: none"> <li><input type="radio"/> Jeff Cannon</li> <li><input type="radio"/> Mike Muskus</li> </ul>	
<p align="center"><b>Wayne County Board of Commissioners At-Large</b> Unexpired term ending 2028 (You may vote for ONE)</p>	
<ul style="list-style-type: none"> <li><input type="radio"/> Jennifer Smith Strickland</li> <li><input type="radio"/> Kevin Johnson</li> </ul>	
<p align="center"><b>Wayne County Sheriff</b> (You may vote for ONE)</p>	
<ul style="list-style-type: none"> <li><input type="radio"/> Larry M. Pierce</li> <li><input type="radio"/> Stephen (Stevie) Howell</li> <li><input type="radio"/> Ricky Hooks</li> </ul>	





Sample Ballot - Republican Party Primary  
Wayne County, North Carolina  
March 3, 2026

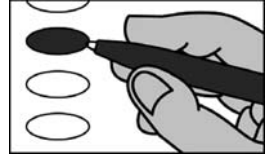
**R0097**



PCT: 21

**BALLOT MARKING INSTRUCTIONS**

- A. With the marking device provided or a black ball point pen, completely fill in the oval to the left of each candidate or selection of your choice as shown.
- B. If you tear, deface or wrongly mark this ballot, return it to request a replacement.



PARTISAN NOMINATIONS	REFERENDUM
<b>US Senate</b> (You may vote for ONE)	<b>Wayne County Local Sales and Use Tax</b>
<input type="radio"/> Margot Dupre <input type="radio"/> Richard Dansie <input type="radio"/> Donald M. (Don) Brown <input type="radio"/> Michael Whatley <input type="radio"/> Elizabeth A. Temple <input type="radio"/> Michele Morrow <input type="radio"/> Thomas Johnson	Local sales and use tax at the rate of one-quarter percent (0.25%) in addition to all other State and local sales and use taxes.  <input type="radio"/> For <input type="radio"/> Against
<b>End of Ballot</b>	
<b>NC Court of Appeals Judge Seat 1</b> (You may vote for ONE)	
<input type="radio"/> Michael C. Byrne <input type="radio"/> Matt Smith	
<b>District Attorney District 9</b> (You may vote for ONE)	
<input type="radio"/> Jeff Cannon <input type="radio"/> Mike Muskus	
<b>Wayne County Board of Commissioners At-Large</b> Unexpired term ending 2028 (You may vote for ONE)	
<input type="radio"/> Jennifer Smith Strickland <input type="radio"/> Kevin Johnson	
<b>Wayne County Sheriff</b> (You may vote for ONE)	
<input type="radio"/> Larry M. Pierce <input type="radio"/> Stephen (Stevie) Howell <input type="radio"/> Ricky Hooks	

Sample Ballot - Republican Party Primary  
Wayne County, North Carolina  
March 3, 2026

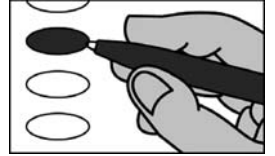
R0098



PCT: 21

**BALLOT MARKING INSTRUCTIONS**

- A. With the marking device provided or a black ball point pen, completely fill in the oval to the left of each candidate or selection of your choice as shown.
- B. If you tear, deface or wrongly mark this ballot, return it to request a replacement.



**PARTISAN NOMINATIONS**

**US Senate**  
(You may vote for ONE)

- Margot Dupre
- Richard Dansie
- Donald M. (Don) Brown
- Michael Whatley
- Elizabeth A. Temple
- Michele Morrow
- Thomas Johnson

**NC Court of Appeals Judge  
Seat 1**  
(You may vote for ONE)

- Michael C. Byrne
- Matt Smith

**District Attorney  
District 9**  
(You may vote for ONE)

- Jeff Cannon
- Mike Muskus

**Wayne County  
Board of Commissioners At-Large**  
Unexpired term ending 2028  
(You may vote for ONE)

- Jennifer Smith Strickland
- Kevin Johnson

**Wayne County  
Sheriff**  
(You may vote for ONE)

- Larry M. Pierce
- Stephen (Stevie) Howell
- Ricky Hooks

End of Ballot

SAMPLE BALLOT  
SAMPLE BALLOT  
SAMPLE BALLOT  
SAMPLE BALLOT  
SAMPLE BALLOT  
SAMPLE BALLOT  
SAMPLE BALLOT  
SAMPLE BALLOT  
SAMPLE BALLOT  
SAMPLE BALLOT

SAMPLE BALLOT  
SAMPLE BALLOT  
SAMPLE BALLOT  
SAMPLE BALLOT  
SAMPLE BALLOT  
SAMPLE BALLOT  
SAMPLE BALLOT  
SAMPLE BALLOT  
SAMPLE BALLOT  
SAMPLE BALLOT

Sample Ballot - Republican Party Primary  
Wayne County, North Carolina  
March 3, 2026

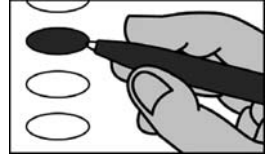
**R0099**



PCT: 22

**BALLOT MARKING INSTRUCTIONS**

- A. With the marking device provided or a black ball point pen, completely fill in the oval to the left of each candidate or selection of your choice as shown.
- B. If you tear, deface or wrongly mark this ballot, return it to request a replacement.



PARTISAN NOMINATIONS	REFERENDUM
<b>US Senate</b> (You may vote for ONE)	<b>Wayne County Local Sales and Use Tax</b>
<input type="radio"/> Margot Dupre <input type="radio"/> Richard Dansie <input type="radio"/> Donald M. (Don) Brown <input type="radio"/> Michael Whatley <input type="radio"/> Elizabeth A. Temple <input type="radio"/> Michele Morrow <input type="radio"/> Thomas Johnson	Local sales and use tax at the rate of one-quarter percent (0.25%) in addition to all other State and local sales and use taxes.  <input type="radio"/> For <input type="radio"/> Against
<b>End of Ballot</b>	
<b>NC Court of Appeals Judge Seat 1</b> (You may vote for ONE)	
<input type="radio"/> Michael C. Byrne <input type="radio"/> Matt Smith	
<b>District Attorney District 9</b> (You may vote for ONE)	
<input type="radio"/> Jeff Cannon <input type="radio"/> Mike Muskus	
<b>Wayne County Board of Commissioners At-Large</b> Unexpired term ending 2028 (You may vote for ONE)	
<input type="radio"/> Jennifer Smith Strickland <input type="radio"/> Kevin Johnson	
<b>Wayne County Sheriff</b> (You may vote for ONE)	
<input type="radio"/> Larry M. Pierce <input type="radio"/> Stephen (Stevie) Howell <input type="radio"/> Ricky Hooks	

SAMPLE BALLOT

SAMPLE BALLOT

Sample Ballot - Republican Party Primary  
Wayne County, North Carolina  
March 3, 2026

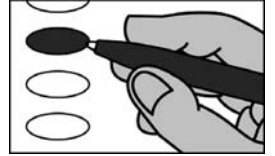
R0100



PCT: 22

**BALLOT MARKING INSTRUCTIONS**

- A. With the marking device provided or a black ball point pen, completely fill in the oval to the left of each candidate or selection of your choice as shown.
- B. If you tear, deface or wrongly mark this ballot, return it to request a replacement.



**PARTISAN NOMINATIONS**

**US Senate**  
(You may vote for ONE)

- Margot Dupre
- Richard Dansie
- Donald M. (Don) Brown
- Michael Whatley
- Elizabeth A. Temple
- Michele Morrow
- Thomas Johnson

**NC Court of Appeals Judge  
Seat 1**  
(You may vote for ONE)

- Michael C. Byrne
- Matt Smith

**District Attorney  
District 9**  
(You may vote for ONE)

- Jeff Cannon
- Mike Muskus

**Wayne County  
Board of Commissioners At-Large**  
Unexpired term ending 2028  
(You may vote for ONE)

- Jennifer Smith Strickland
- Kevin Johnson

**Wayne County  
Sheriff**  
(You may vote for ONE)

- Larry M. Pierce
- Stephen (Stevie) Howell
- Ricky Hooks

End of Ballot

SAMPLE BALLOT

SAMPLE BALLOT

SAMPLE BALLOT

SAMPLE BALLOT

SAMPLE BALLOT

SAMPLE BALLOT

SAMPLE BALLOT

SAMPLE BALLOT

SAMPLE BALLOT

SAMPLE BALLOT

SAMPLE BALLOT

SAMPLE BALLOT

Sample Ballot - Republican Party Primary  
Wayne County, North Carolina  
March 3, 2026

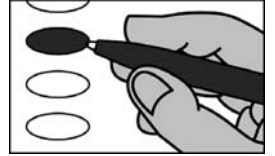
**R0101**



PCT: 23

**BALLOT MARKING INSTRUCTIONS**

- A. With the marking device provided or a black ball point pen, completely fill in the oval to the left of each candidate or selection of your choice as shown.
- B. If you tear, deface or wrongly mark this ballot, return it to request a replacement.



PARTISAN NOMINATIONS	REFERENDUM
<b>US Senate</b> (You may vote for ONE)	<b>Wayne County Local Sales and Use Tax</b>
<input type="radio"/> Margot Dupre <input type="radio"/> Richard Dansie <input type="radio"/> Donald M. (Don) Brown <input type="radio"/> Michael Whatley <input type="radio"/> Elizabeth A. Temple <input type="radio"/> Michele Morrow <input type="radio"/> Thomas Johnson	Local sales and use tax at the rate of one-quarter percent (0.25%) in addition to all other State and local sales and use taxes.  <input type="radio"/> For <input type="radio"/> Against
<b>End of Ballot</b>	
<b>NC Court of Appeals Judge Seat 1</b> (You may vote for ONE)	
<input type="radio"/> Michael C. Byrne <input type="radio"/> Matt Smith	
<b>District Attorney District 9</b> (You may vote for ONE)	
<input type="radio"/> Jeff Cannon <input type="radio"/> Mike Muskus	
<b>Wayne County Board of Commissioners At-Large</b> Unexpired term ending 2028 (You may vote for ONE)	
<input type="radio"/> Jennifer Smith Strickland <input type="radio"/> Kevin Johnson	
<b>Wayne County Sheriff</b> (You may vote for ONE)	
<input type="radio"/> Larry M. Pierce <input type="radio"/> Stephen (Stevie) Howell <input type="radio"/> Ricky Hooks	



Sample Ballot - Republican Party Primary  
Wayne County, North Carolina  
March 3, 2026

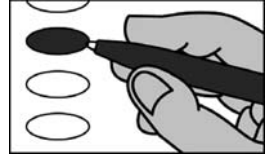
**R0103**



PCT: 24

**BALLOT MARKING INSTRUCTIONS**

- A. With the marking device provided or a black ball point pen, completely fill in the oval to the left of each candidate or selection of your choice as shown.
- B. If you tear, deface or wrongly mark this ballot, return it to request a replacement.



<b>PARTISAN NOMINATIONS</b>	<b>Wayne County Sheriff</b> (You may vote for ONE)
<b>US Senate</b> (You may vote for ONE)	<input type="radio"/> <b>Larry M. Pierce</b> <input type="radio"/> <b>Stephen (Stevie) Howell</b> <input type="radio"/> <b>Ricky Hooks</b>
<input type="radio"/> <b>Margot Dupre</b> <input type="radio"/> <b>Richard Dansie</b> <input type="radio"/> <b>Donald M. (Don) Brown</b> <input type="radio"/> <b>Michael Whatley</b> <input type="radio"/> <b>Elizabeth A. Temple</b> <input type="radio"/> <b>Michele Morrow</b> <input type="radio"/> <b>Thomas Johnson</b>	<b>REFERENDUM</b>
	<b>Wayne County Local Sales and Use Tax</b>
	Local sales and use tax at the rate of one-quarter percent (0.25%) in addition to all other State and local sales and use taxes.  <input type="radio"/> <b>For</b> <input type="radio"/> <b>Against</b>
<b>NC Court of Appeals Judge Seat 1</b> (You may vote for ONE)	<b>End of Ballot</b>
<input type="radio"/> <b>Michael C. Byrne</b> <input type="radio"/> <b>Matt Smith</b>	
<b>NC House of Representatives District 4</b> (You may vote for ONE)	
<input type="radio"/> <b>Jimmy Dixon</b> <input type="radio"/> <b>Marcella Barbour</b>	
<b>District Attorney District 9</b> (You may vote for ONE)	
<input type="radio"/> <b>Jeff Cannon</b> <input type="radio"/> <b>Mike Muskus</b>	
<b>Wayne County Board of Commissioners At-Large</b> Unexpired term ending 2028 (You may vote for ONE)	
<input type="radio"/> <b>Jennifer Smith Strickland</b> <input type="radio"/> <b>Kevin Johnson</b>	

Sample Ballot - Republican Party Primary  
Wayne County, North Carolina  
March 3, 2026

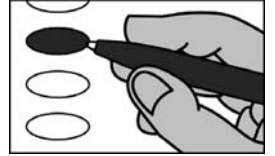
**R0104**



PCT: 24

**BALLOT MARKING INSTRUCTIONS**

- A. With the marking device provided or a black ball point pen, completely fill in the oval to the left of each candidate or selection of your choice as shown.
- B. If you tear, deface or wrongly mark this ballot, return it to request a replacement.



<b>PARTISAN NOMINATIONS</b>	<b>Wayne County Sheriff</b> (You may vote for ONE)
<b>US Senate</b> (You may vote for ONE)	<input type="radio"/> <b>Larry M. Pierce</b>  <input type="radio"/> <b>Stephen (Stevie) Howell</b>  <input type="radio"/> <b>Ricky Hooks</b>
<input type="radio"/> <b>Margot Dupre</b>  <input type="radio"/> <b>Richard Dansie</b>  <input type="radio"/> <b>Donald M. (Don) Brown</b>  <input type="radio"/> <b>Michael Whatley</b>  <input type="radio"/> <b>Elizabeth A. Temple</b>  <input type="radio"/> <b>Michele Morrow</b>  <input type="radio"/> <b>Thomas Johnson</b>	<b>End of Ballot</b>
<b>NC Court of Appeals Judge Seat 1</b> (You may vote for ONE)	
<input type="radio"/> <b>Michael C. Byrne</b>  <input type="radio"/> <b>Matt Smith</b>	
<b>NC House of Representatives District 4</b> (You may vote for ONE)	
<input type="radio"/> <b>Jimmy Dixon</b>  <input type="radio"/> <b>Marcella Barbour</b>	
<b>District Attorney District 9</b> (You may vote for ONE)	
<input type="radio"/> <b>Jeff Cannon</b>  <input type="radio"/> <b>Mike Muskus</b>	
<b>Wayne County Board of Commissioners At-Large</b> Unexpired term ending 2028 (You may vote for ONE)	
<input type="radio"/> <b>Jennifer Smith Strickland</b>  <input type="radio"/> <b>Kevin Johnson</b>	



Sample Ballot - Republican Party Primary  
Wayne County, North Carolina  
March 3, 2026

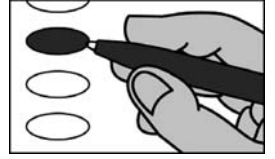
**R0105**



PCT: 2530

**BALLOT MARKING INSTRUCTIONS**

- A. With the marking device provided or a black ball point pen, completely fill in the oval to the left of each candidate or selection of your choice as shown.
- B. If you tear, deface or wrongly mark this ballot, return it to request a replacement.



<b>PARTISAN NOMINATIONS</b>	<b>Wayne County Sheriff</b> (You may vote for ONE)
<b>US Senate</b> (You may vote for ONE)	<input type="radio"/> <b>Larry M. Pierce</b> <input type="radio"/> <b>Stephen (Stevie) Howell</b> <input type="radio"/> <b>Ricky Hooks</b>
<input type="radio"/> <b>Margot Dupre</b> <input type="radio"/> <b>Richard Dansie</b> <input type="radio"/> <b>Donald M. (Don) Brown</b> <input type="radio"/> <b>Michael Whatley</b> <input type="radio"/> <b>Elizabeth A. Temple</b> <input type="radio"/> <b>Michele Morrow</b> <input type="radio"/> <b>Thomas Johnson</b>	<b>REFERENDUM</b>
<b>NC Court of Appeals Judge Seat 1</b> (You may vote for ONE)	<b>Wayne County Local Sales and Use Tax</b>
<input type="radio"/> <b>Michael C. Byrne</b> <input type="radio"/> <b>Matt Smith</b>	Local sales and use tax at the rate of one-quarter percent (0.25%) in addition to all other State and local sales and use taxes.  <input type="radio"/> <b>For</b> <input type="radio"/> <b>Against</b>
<b>NC House of Representatives District 4</b> (You may vote for ONE)	<b>End of Ballot</b>
<input type="radio"/> <b>Jimmy Dixon</b> <input type="radio"/> <b>Marcella Barbour</b>	
<b>District Attorney District 9</b> (You may vote for ONE)	
<input type="radio"/> <b>Jeff Cannon</b> <input type="radio"/> <b>Mike Muskus</b>	
<b>Wayne County Board of Commissioners At-Large</b> Unexpired term ending 2028 (You may vote for ONE)	
<input type="radio"/> <b>Jennifer Smith Strickland</b> <input type="radio"/> <b>Kevin Johnson</b>	

Sample Ballot - Republican Party Primary  
Wayne County, North Carolina  
March 3, 2026

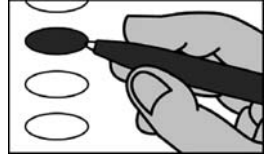
**R0106**



PCT: 2530

**BALLOT MARKING INSTRUCTIONS**

- A. With the marking device provided or a black ball point pen, completely fill in the oval to the left of each candidate or selection of your choice as shown.
- B. If you tear, deface or wrongly mark this ballot, return it to request a replacement.



<b>PARTISAN NOMINATIONS</b>	<b>Wayne County Sheriff</b> (You may vote for ONE)
<b>US Senate</b> (You may vote for ONE)	<input type="radio"/> <b>Larry M. Pierce</b> <input type="radio"/> <b>Stephen (Stevie) Howell</b> <input type="radio"/> <b>Ricky Hooks</b>
<input type="radio"/> <b>Margot Dupre</b> <input type="radio"/> <b>Richard Dansie</b> <input type="radio"/> <b>Donald M. (Don) Brown</b> <input type="radio"/> <b>Michael Whatley</b> <input type="radio"/> <b>Elizabeth A. Temple</b> <input type="radio"/> <b>Michele Morrow</b> <input type="radio"/> <b>Thomas Johnson</b>	<b>End of Ballot</b>
<b>NC Court of Appeals Judge Seat 1</b> (You may vote for ONE)	
<input type="radio"/> <b>Michael C. Byrne</b> <input type="radio"/> <b>Matt Smith</b>	
<b>NC House of Representatives District 4</b> (You may vote for ONE)	
<input type="radio"/> <b>Jimmy Dixon</b> <input type="radio"/> <b>Marcella Barbour</b>	
<b>District Attorney District 9</b> (You may vote for ONE)	
<input type="radio"/> <b>Jeff Cannon</b> <input type="radio"/> <b>Mike Muskus</b>	
<b>Wayne County Board of Commissioners At-Large</b> Unexpired term ending 2028 (You may vote for ONE)	
<input type="radio"/> <b>Jennifer Smith Strickland</b> <input type="radio"/> <b>Kevin Johnson</b>	

SAMPLE BALLOT

SAMPLE BALLOT

Sample Ballot - Republican Party Primary  
Wayne County, North Carolina  
March 3, 2026

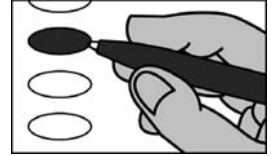
**R0107**



PCT: 26

**BALLOT MARKING INSTRUCTIONS**

- A. With the marking device provided or a black ball point pen, completely fill in the oval to the left of each candidate or selection of your choice as shown.
- B. If you tear, deface or wrongly mark this ballot, return it to request a replacement.



<b>PARTISAN NOMINATIONS</b>	<b>Wayne County Sheriff</b> (You may vote for ONE)
<b>US Senate</b> (You may vote for ONE)	<input type="radio"/> <b>Larry M. Pierce</b> <input type="radio"/> <b>Stephen (Stevie) Howell</b> <input type="radio"/> <b>Ricky Hooks</b>
<input type="radio"/> <b>Margot Dupre</b> <input type="radio"/> <b>Richard Dansie</b> <input type="radio"/> <b>Donald M. (Don) Brown</b> <input type="radio"/> <b>Michael Whatley</b> <input type="radio"/> <b>Elizabeth A. Temple</b> <input type="radio"/> <b>Michele Morrow</b> <input type="radio"/> <b>Thomas Johnson</b>	<b>REFERENDUM</b>
	<b>Wayne County Local Sales and Use Tax</b>
	Local sales and use tax at the rate of one-quarter percent (0.25%) in addition to all other State and local sales and use taxes.  <input type="radio"/> <b>For</b> <input type="radio"/> <b>Against</b>
<b>NC Court of Appeals Judge Seat 1</b> (You may vote for ONE)	<b>End of Ballot</b>
<input type="radio"/> <b>Michael C. Byrne</b> <input type="radio"/> <b>Matt Smith</b>	
<b>NC House of Representatives District 4</b> (You may vote for ONE)	
<input type="radio"/> <b>Jimmy Dixon</b> <input type="radio"/> <b>Marcella Barbour</b>	
<b>District Attorney District 9</b> (You may vote for ONE)	
<input type="radio"/> <b>Jeff Cannon</b> <input type="radio"/> <b>Mike Muskus</b>	
<b>Wayne County Board of Commissioners At-Large</b> Unexpired term ending 2028 (You may vote for ONE)	
<input type="radio"/> <b>Jennifer Smith Strickland</b> <input type="radio"/> <b>Kevin Johnson</b>	

Sample Ballot - Republican Party Primary  
Wayne County, North Carolina  
March 3, 2026

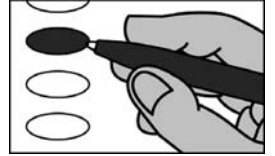
**R0108**



PCT: 26

**BALLOT MARKING INSTRUCTIONS**

- A. With the marking device provided or a black ball point pen, completely fill in the oval to the left of each candidate or selection of your choice as shown.
- B. If you tear, deface or wrongly mark this ballot, return it to request a replacement.



<b>PARTISAN NOMINATIONS</b>	<b>Wayne County Sheriff</b> (You may vote for ONE)
<b>US Senate</b> (You may vote for ONE)	<input type="radio"/> <b>Larry M. Pierce</b> <input type="radio"/> <b>Stephen (Stevie) Howell</b> <input type="radio"/> <b>Ricky Hooks</b>
<input type="radio"/> <b>Margot Dupre</b> <input type="radio"/> <b>Richard Dansie</b> <input type="radio"/> <b>Donald M. (Don) Brown</b> <input type="radio"/> <b>Michael Whatley</b> <input type="radio"/> <b>Elizabeth A. Temple</b> <input type="radio"/> <b>Michele Morrow</b> <input type="radio"/> <b>Thomas Johnson</b>	<b>End of Ballot</b>
<b>NC Court of Appeals Judge Seat 1</b> (You may vote for ONE)	
<input type="radio"/> <b>Michael C. Byrne</b> <input type="radio"/> <b>Matt Smith</b>	
<b>NC House of Representatives District 4</b> (You may vote for ONE)	
<input type="radio"/> <b>Jimmy Dixon</b> <input type="radio"/> <b>Marcella Barbour</b>	
<b>District Attorney District 9</b> (You may vote for ONE)	
<input type="radio"/> <b>Jeff Cannon</b> <input type="radio"/> <b>Mike Muskus</b>	
<b>Wayne County Board of Commissioners At-Large</b> Unexpired term ending 2028 (You may vote for ONE)	
<input type="radio"/> <b>Jennifer Smith Strickland</b> <input type="radio"/> <b>Kevin Johnson</b>	

Sample Ballot - Republican Party Primary  
Wayne County, North Carolina  
March 3, 2026

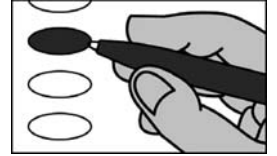
**R0109**



PCT: 27

**BALLOT MARKING INSTRUCTIONS**

- A. With the marking device provided or a black ball point pen, completely fill in the oval to the left of each candidate or selection of your choice as shown.
- B. If you tear, deface or wrongly mark this ballot, return it to request a replacement.



<b>PARTISAN NOMINATIONS</b>	<b>Wayne County Sheriff</b> (You may vote for ONE)
<b>US Senate</b> (You may vote for ONE)	<input type="radio"/> <b>Larry M. Pierce</b>  <input type="radio"/> <b>Stephen (Stevie) Howell</b>  <input type="radio"/> <b>Ricky Hooks</b>
<input type="radio"/> <b>Margot Dupre</b>  <input type="radio"/> <b>Richard Dansie</b>  <input type="radio"/> <b>Donald M. (Don) Brown</b>  <input type="radio"/> <b>Michael Whatley</b>  <input type="radio"/> <b>Elizabeth A. Temple</b>  <input type="radio"/> <b>Michele Morrow</b>  <input type="radio"/> <b>Thomas Johnson</b>	<b>REFERENDUM</b>
<b>NC Court of Appeals Judge Seat 1</b> (You may vote for ONE)	<b>Wayne County Local Sales and Use Tax</b>
<input type="radio"/> <b>Michael C. Byrne</b>  <input type="radio"/> <b>Matt Smith</b>	Local sales and use tax at the rate of one-quarter percent (0.25%) in addition to all other State and local sales and use taxes.  <input type="radio"/> <b>For</b>  <input type="radio"/> <b>Against</b>
<b>NC House of Representatives District 4</b> (You may vote for ONE)	<b>End of Ballot</b>
<input type="radio"/> <b>Jimmy Dixon</b>  <input type="radio"/> <b>Marcella Barbour</b>	
<b>District Attorney District 9</b> (You may vote for ONE)	
<input type="radio"/> <b>Jeff Cannon</b>  <input type="radio"/> <b>Mike Muskus</b>	
<b>Wayne County Board of Commissioners At-Large</b> Unexpired term ending 2028 (You may vote for ONE)	
<input type="radio"/> <b>Jennifer Smith Strickland</b>  <input type="radio"/> <b>Kevin Johnson</b>	

Sample Ballot - Republican Party Primary  
Wayne County, North Carolina  
March 3, 2026

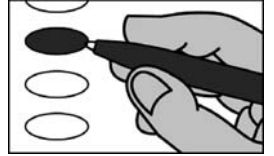
**R0110**



PCT: 27

**BALLOT MARKING INSTRUCTIONS**

- A. With the marking device provided or a black ball point pen, completely fill in the oval to the left of each candidate or selection of your choice as shown.
- B. If you tear, deface or wrongly mark this ballot, return it to request a replacement.



<b>PARTISAN NOMINATIONS</b>	<b>Wayne County Sheriff</b> (You may vote for ONE)
<b>US Senate</b> (You may vote for ONE)	<input type="radio"/> <b>Larry M. Pierce</b> <input type="radio"/> <b>Stephen (Stevie) Howell</b> <input type="radio"/> <b>Ricky Hooks</b>
<input type="radio"/> <b>Margot Dupre</b> <input type="radio"/> <b>Richard Dansie</b> <input type="radio"/> <b>Donald M. (Don) Brown</b> <input type="radio"/> <b>Michael Whatley</b> <input type="radio"/> <b>Elizabeth A. Temple</b> <input type="radio"/> <b>Michele Morrow</b> <input type="radio"/> <b>Thomas Johnson</b>	<b>End of Ballot</b>
<b>NC Court of Appeals Judge Seat 1</b> (You may vote for ONE)	
<input type="radio"/> <b>Michael C. Byrne</b> <input type="radio"/> <b>Matt Smith</b>	
<b>NC House of Representatives District 4</b> (You may vote for ONE)	
<input type="radio"/> <b>Jimmy Dixon</b> <input type="radio"/> <b>Marcella Barbour</b>	
<b>District Attorney District 9</b> (You may vote for ONE)	
<input type="radio"/> <b>Jeff Cannon</b> <input type="radio"/> <b>Mike Muskus</b>	
<b>Wayne County Board of Commissioners At-Large</b> Unexpired term ending 2028 (You may vote for ONE)	
<input type="radio"/> <b>Jennifer Smith Strickland</b> <input type="radio"/> <b>Kevin Johnson</b>	

Sample Ballot - Republican Party Primary  
Wayne County, North Carolina  
March 3, 2026

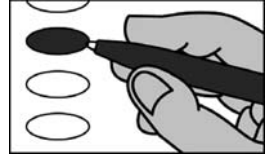
**R0111**



PCT: 28

**BALLOT MARKING INSTRUCTIONS**

- A. With the marking device provided or a black ball point pen, completely fill in the oval to the left of each candidate or selection of your choice as shown.
- B. If you tear, deface or wrongly mark this ballot, return it to request a replacement.



<b>PARTISAN NOMINATIONS</b>	<b>Wayne County Sheriff</b> (You may vote for ONE)
<b>US Senate</b> (You may vote for ONE)	<input type="radio"/> <b>Larry M. Pierce</b> <input type="radio"/> <b>Stephen (Stevie) Howell</b> <input type="radio"/> <b>Ricky Hooks</b>
<input type="radio"/> <b>Margot Dupre</b> <input type="radio"/> <b>Richard Dansie</b> <input type="radio"/> <b>Donald M. (Don) Brown</b> <input type="radio"/> <b>Michael Whatley</b> <input type="radio"/> <b>Elizabeth A. Temple</b> <input type="radio"/> <b>Michele Morrow</b> <input type="radio"/> <b>Thomas Johnson</b>	<b>REFERENDUM</b>
	<b>Wayne County Local Sales and Use Tax</b>
	Local sales and use tax at the rate of one-quarter percent (0.25%) in addition to all other State and local sales and use taxes.  <input type="radio"/> <b>For</b> <input type="radio"/> <b>Against</b>
<b>NC Court of Appeals Judge Seat 1</b> (You may vote for ONE)	<b>End of Ballot</b>
<input type="radio"/> <b>Michael C. Byrne</b> <input type="radio"/> <b>Matt Smith</b>	
<b>NC House of Representatives District 4</b> (You may vote for ONE)	
<input type="radio"/> <b>Jimmy Dixon</b> <input type="radio"/> <b>Marcella Barbour</b>	
<b>District Attorney District 9</b> (You may vote for ONE)	
<input type="radio"/> <b>Jeff Cannon</b> <input type="radio"/> <b>Mike Muskus</b>	
<b>Wayne County Board of Commissioners At-Large</b> Unexpired term ending 2028 (You may vote for ONE)	
<input type="radio"/> <b>Jennifer Smith Strickland</b> <input type="radio"/> <b>Kevin Johnson</b>	

Sample Ballot - Republican Party Primary  
Wayne County, North Carolina  
March 3, 2026

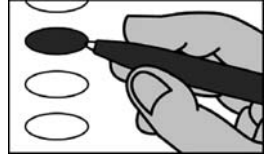
**R0112**



PCT: 28

**BALLOT MARKING INSTRUCTIONS**

- A. With the marking device provided or a black ball point pen, completely fill in the oval to the left of each candidate or selection of your choice as shown.
- B. If you tear, deface or wrongly mark this ballot, return it to request a replacement.



<b>PARTISAN NOMINATIONS</b>	<b>Wayne County Sheriff</b> (You may vote for ONE)
<b>US Senate</b> (You may vote for ONE)	<input type="radio"/> <b>Larry M. Pierce</b>  <input type="radio"/> <b>Stephen (Stevie) Howell</b>  <input type="radio"/> <b>Ricky Hooks</b>
<input type="radio"/> <b>Margot Dupre</b>  <input type="radio"/> <b>Richard Dansie</b>  <input type="radio"/> <b>Donald M. (Don) Brown</b>  <input type="radio"/> <b>Michael Whatley</b>  <input type="radio"/> <b>Elizabeth A. Temple</b>  <input type="radio"/> <b>Michele Morrow</b>  <input type="radio"/> <b>Thomas Johnson</b>	<b>End of Ballot</b>
<b>NC Court of Appeals Judge Seat 1</b> (You may vote for ONE)	
<input type="radio"/> <b>Michael C. Byrne</b>  <input type="radio"/> <b>Matt Smith</b>	
<b>NC House of Representatives District 4</b> (You may vote for ONE)	
<input type="radio"/> <b>Jimmy Dixon</b>  <input type="radio"/> <b>Marcella Barbour</b>	
<b>District Attorney District 9</b> (You may vote for ONE)	
<input type="radio"/> <b>Jeff Cannon</b>  <input type="radio"/> <b>Mike Muskus</b>	
<b>Wayne County Board of Commissioners At-Large</b> Unexpired term ending 2028 (You may vote for ONE)	
<input type="radio"/> <b>Jennifer Smith Strickland</b>  <input type="radio"/> <b>Kevin Johnson</b>	

SAMPLE BALLOT

SAMPLE BALLOT



Sample Ballot - Republican Party Primary  
Wayne County, North Carolina  
March 3, 2026

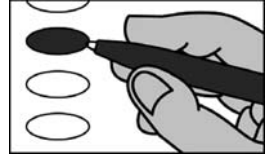
**R0113**



PCT: 29

**BALLOT MARKING INSTRUCTIONS**

- A. With the marking device provided or a black ball point pen, completely fill in the oval to the left of each candidate or selection of your choice as shown.
- B. If you tear, deface or wrongly mark this ballot, return it to request a replacement.



PARTISAN NOMINATIONS	REFERENDUM
<p align="center"><b>US Senate</b> (You may vote for ONE)</p>	<p align="center"><b>Wayne County Local Sales and Use Tax</b></p>
<ul style="list-style-type: none"> <li><input type="radio"/> Margot Dupre</li> <li><input type="radio"/> Richard Dansie</li> <li><input type="radio"/> Donald M. (Don) Brown</li> <li><input type="radio"/> Michael Whatley</li> <li><input type="radio"/> Elizabeth A. Temple</li> <li><input type="radio"/> Michele Morrow</li> <li><input type="radio"/> Thomas Johnson</li> </ul>	<p>Local sales and use tax at the rate of one-quarter percent (0.25%) in addition to all other State and local sales and use taxes.</p> <ul style="list-style-type: none"> <li><input type="radio"/> For</li> <li><input type="radio"/> Against</li> </ul>
<b>End of Ballot</b>	
<p align="center"><b>NC Court of Appeals Judge Seat 1</b> (You may vote for ONE)</p>	
<ul style="list-style-type: none"> <li><input type="radio"/> Michael C. Byrne</li> <li><input type="radio"/> Matt Smith</li> </ul>	
<p align="center"><b>District Attorney District 9</b> (You may vote for ONE)</p>	
<ul style="list-style-type: none"> <li><input type="radio"/> Jeff Cannon</li> <li><input type="radio"/> Mike Muskus</li> </ul>	
<p align="center"><b>Wayne County Board of Commissioners At-Large</b> Unexpired term ending 2028 (You may vote for ONE)</p>	
<ul style="list-style-type: none"> <li><input type="radio"/> Jennifer Smith Strickland</li> <li><input type="radio"/> Kevin Johnson</li> </ul>	
<p align="center"><b>Wayne County Sheriff</b> (You may vote for ONE)</p>	
<ul style="list-style-type: none"> <li><input type="radio"/> Larry M. Pierce</li> <li><input type="radio"/> Stephen (Stevie) Howell</li> <li><input type="radio"/> Ricky Hooks</li> </ul>	



Sample Ballot - Nonpartisan  
Wayne County, North Carolina  
March 3, 2026

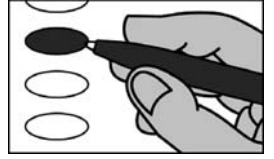
**N0115**



PCT: 01

**BALLOT MARKING INSTRUCTIONS**

- A. With the marking device provided or a black ball point pen, completely fill in the oval to the left of each candidate or selection of your choice as shown.
- B. If you tear, deface or wrongly mark this ballot, return it to request a replacement.



**REFERENDUM**

**Wayne County  
Local Sales and Use Tax**

Local sales and use tax at the rate of one-quarter percent (0.25%) in addition to all other State and local sales and use taxes.

- For
- Against

**End of Ballot**

SAMPLE BALLOT  
SAMPLE BALLOT  
SAMPLE BALLOT  
SAMPLE BALLOT  
SAMPLE BALLOT  
SAMPLE BALLOT  
SAMPLE BALLOT  
SAMPLE BALLOT  
SAMPLE BALLOT  
SAMPLE BALLOT

SAMPLE BALLOT  
SAMPLE BALLOT  
SAMPLE BALLOT  
SAMPLE BALLOT  
SAMPLE BALLOT  
SAMPLE BALLOT  
SAMPLE BALLOT  
SAMPLE BALLOT  
SAMPLE BALLOT  
SAMPLE BALLOT

Sample Ballot - Nonpartisan  
Wayne County, North Carolina  
March 3, 2026

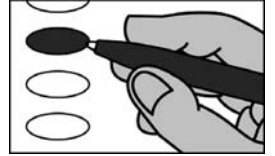
**N0116**



PCT: 02

**BALLOT MARKING INSTRUCTIONS**

- A. With the marking device provided or a black ball point pen, completely fill in the oval to the left of each candidate or selection of your choice as shown.
- B. If you tear, deface or wrongly mark this ballot, return it to request a replacement.



**REFERENDUM**

**Wayne County  
Local Sales and Use Tax**

Local sales and use tax at the rate of one-quarter percent (0.25%) in addition to all other State and local sales and use taxes.

- For
- Against

**End of Ballot**

SAMPLE BALLOT  
SAMPLE BALLOT  
SAMPLE BALLOT  
SAMPLE BALLOT  
SAMPLE BALLOT  
SAMPLE BALLOT  
SAMPLE BALLOT  
SAMPLE BALLOT  
SAMPLE BALLOT  
SAMPLE BALLOT

SAMPLE BALLOT  
SAMPLE BALLOT  
SAMPLE BALLOT  
SAMPLE BALLOT  
SAMPLE BALLOT  
SAMPLE BALLOT  
SAMPLE BALLOT  
SAMPLE BALLOT  
SAMPLE BALLOT  
SAMPLE BALLOT



Sample Ballot - Nonpartisan  
Wayne County, North Carolina  
March 3, 2026

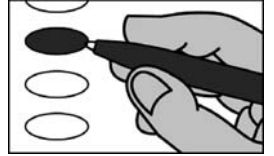
N0118



PCT: 04

**BALLOT MARKING INSTRUCTIONS**

- A. With the marking device provided or a black ball point pen, completely fill in the oval to the left of each candidate or selection of your choice as shown.
- B. If you tear, deface or wrongly mark this ballot, return it to request a replacement.



**REFERENDUM**

**Wayne County  
Local Sales and Use Tax**

Local sales and use tax at the rate of one-quarter percent (0.25%) in addition to all other State and local sales and use taxes.

- For
- Against

**End of Ballot**

SAMPLE BALLOT  
SAMPLE BALLOT  
SAMPLE BALLOT  
SAMPLE BALLOT  
SAMPLE BALLOT  
SAMPLE BALLOT  
SAMPLE BALLOT  
SAMPLE BALLOT  
SAMPLE BALLOT  
SAMPLE BALLOT  
SAMPLE BALLOT  
SAMPLE BALLOT

SAMPLE BALLOT  
SAMPLE BALLOT  
SAMPLE BALLOT  
SAMPLE BALLOT  
SAMPLE BALLOT  
SAMPLE BALLOT  
SAMPLE BALLOT  
SAMPLE BALLOT  
SAMPLE BALLOT  
SAMPLE BALLOT  
SAMPLE BALLOT  
SAMPLE BALLOT

Sample Ballot - Nonpartisan  
Wayne County, North Carolina  
March 3, 2026

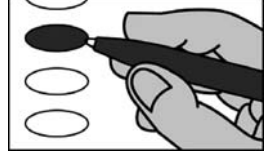
**N0119**



PCT: 05

**BALLOT MARKING INSTRUCTIONS**

- A. With the marking device provided or a black ball point pen, completely fill in the oval to the left of each candidate or selection of your choice as shown.
- B. If you tear, deface or wrongly mark this ballot, return it to request a replacement.



**REFERENDUM**

**Wayne County  
Local Sales and Use Tax**

Local sales and use tax at the rate of one-quarter percent (0.25%) in addition to all other State and local sales and use taxes.

- For
- Against

**End of Ballot**

SAMPLE BALLOT  
SAMPLE BALLOT  
SAMPLE BALLOT  
SAMPLE BALLOT  
SAMPLE BALLOT  
SAMPLE BALLOT  
SAMPLE BALLOT  
SAMPLE BALLOT  
SAMPLE BALLOT  
SAMPLE BALLOT  
SAMPLE BALLOT

SAMPLE BALLOT  
SAMPLE BALLOT  
SAMPLE BALLOT  
SAMPLE BALLOT  
SAMPLE BALLOT  
SAMPLE BALLOT  
SAMPLE BALLOT  
SAMPLE BALLOT  
SAMPLE BALLOT  
SAMPLE BALLOT  
SAMPLE BALLOT

Sample Ballot - Nonpartisan  
Wayne County, North Carolina  
March 3, 2026

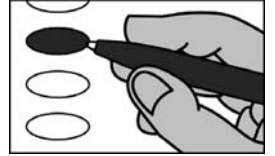
**N0120**



PCT: 06

**BALLOT MARKING INSTRUCTIONS**

- A. With the marking device provided or a black ball point pen, completely fill in the oval to the left of each candidate or selection of your choice as shown.
- B. If you tear, deface or wrongly mark this ballot, return it to request a replacement.



**REFERENDUM**

**Wayne County  
Local Sales and Use Tax**

Local sales and use tax at the rate of one-quarter percent (0.25%) in addition to all other State and local sales and use taxes.

- For
- Against

**End of Ballot**

SAMPLE BALLOT  
SAMPLE BALLOT  
SAMPLE BALLOT  
SAMPLE BALLOT  
SAMPLE BALLOT  
SAMPLE BALLOT  
SAMPLE BALLOT  
SAMPLE BALLOT  
SAMPLE BALLOT  
SAMPLE BALLOT

SAMPLE BALLOT  
SAMPLE BALLOT  
SAMPLE BALLOT  
SAMPLE BALLOT  
SAMPLE BALLOT  
SAMPLE BALLOT  
SAMPLE BALLOT  
SAMPLE BALLOT  
SAMPLE BALLOT  
SAMPLE BALLOT



Sample Ballot - Nonpartisan  
Wayne County, North Carolina  
March 3, 2026

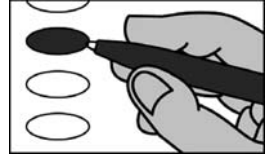
**N0121**



PCT: 07

**BALLOT MARKING INSTRUCTIONS**

- A. With the marking device provided or a black ball point pen, completely fill in the oval to the left of each candidate or selection of your choice as shown.
- B. If you tear, deface or wrongly mark this ballot, return it to request a replacement.



**REFERENDUM**

**Wayne County  
Local Sales and Use Tax**

Local sales and use tax at the rate of one-quarter percent (0.25%) in addition to all other State and local sales and use taxes.

- For
- Against

**End of Ballot**

SAMPLE BALLOT  
SAMPLE BALLOT  
SAMPLE BALLOT  
SAMPLE BALLOT  
SAMPLE BALLOT  
SAMPLE BALLOT  
SAMPLE BALLOT  
SAMPLE BALLOT  
SAMPLE BALLOT  
SAMPLE BALLOT

SAMPLE BALLOT  
SAMPLE BALLOT  
SAMPLE BALLOT  
SAMPLE BALLOT  
SAMPLE BALLOT  
SAMPLE BALLOT  
SAMPLE BALLOT  
SAMPLE BALLOT  
SAMPLE BALLOT  
SAMPLE BALLOT

Sample Ballot - Nonpartisan  
 Wayne County, North Carolina  
 March 3, 2026

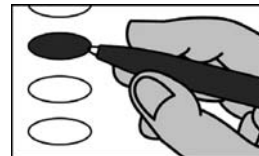
**N0122**




PCT: 08

**BALLOT MARKING INSTRUCTIONS**

- A. With the marking device provided or a black ball point pen, completely fill in the oval to the left of each candidate or selection of your choice as shown.
- B. If you tear, deface or wrongly mark this ballot, return it to request a replacement.



**REFERENDUM**

**Wayne County  
 Local Sales and Use Tax**

Local sales and use tax at the rate of one-quarter percent (0.25%) in addition to all other State and local sales and use taxes.

- For
- Against

**End of Ballot**

SAMPLE BALLOT  
SAMPLE BALLOT  
SAMPLE BALLOT  
SAMPLE BALLOT  
SAMPLE BALLOT  
SAMPLE BALLOT  
SAMPLE BALLOT  
SAMPLE BALLOT  
SAMPLE BALLOT  
SAMPLE BALLOT  
SAMPLE BALLOT

SAMPLE BALLOT  
SAMPLE BALLOT  
SAMPLE BALLOT  
SAMPLE BALLOT  
SAMPLE BALLOT  
SAMPLE BALLOT  
SAMPLE BALLOT  
SAMPLE BALLOT  
SAMPLE BALLOT  
SAMPLE BALLOT  
SAMPLE BALLOT

Sample Ballot - Nonpartisan  
Wayne County, North Carolina  
March 3, 2026

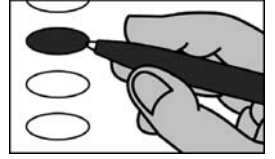
**N0123**



PCT: 09

**BALLOT MARKING INSTRUCTIONS**

- A. With the marking device provided or a black ball point pen, completely fill in the oval to the left of each candidate or selection of your choice as shown.
- B. If you tear, deface or wrongly mark this ballot, return it to request a replacement.



**REFERENDUM**

**Wayne County  
Local Sales and Use Tax**

Local sales and use tax at the rate of one-quarter percent (0.25%) in addition to all other State and local sales and use taxes.

- For
- Against

**End of Ballot**

SAMPLE BALLOT  
SAMPLE BALLOT  
SAMPLE BALLOT  
SAMPLE BALLOT  
SAMPLE BALLOT  
SAMPLE BALLOT  
SAMPLE BALLOT  
SAMPLE BALLOT  
SAMPLE BALLOT  
SAMPLE BALLOT

SAMPLE BALLOT  
SAMPLE BALLOT  
SAMPLE BALLOT  
SAMPLE BALLOT  
SAMPLE BALLOT  
SAMPLE BALLOT  
SAMPLE BALLOT  
SAMPLE BALLOT  
SAMPLE BALLOT  
SAMPLE BALLOT

Sample Ballot - Nonpartisan  
Wayne County, North Carolina  
March 3, 2026

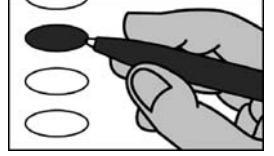
**N0124**



PCT: 10

**BALLOT MARKING INSTRUCTIONS**

- A. With the marking device provided or a black ball point pen, completely fill in the oval to the left of each candidate or selection of your choice as shown.
- B. If you tear, deface or wrongly mark this ballot, return it to request a replacement.



**REFERENDUM**

**Wayne County  
Local Sales and Use Tax**

Local sales and use tax at the rate of one-quarter percent (0.25%) in addition to all other State and local sales and use taxes.

- For
- Against

**End of Ballot**

SAMPLE BALLOT  
SAMPLE BALLOT  
SAMPLE BALLOT  
SAMPLE BALLOT  
SAMPLE BALLOT  
SAMPLE BALLOT  
SAMPLE BALLOT  
SAMPLE BALLOT  
SAMPLE BALLOT  
SAMPLE BALLOT

SAMPLE BALLOT  
SAMPLE BALLOT  
SAMPLE BALLOT  
SAMPLE BALLOT  
SAMPLE BALLOT  
SAMPLE BALLOT  
SAMPLE BALLOT  
SAMPLE BALLOT  
SAMPLE BALLOT  
SAMPLE BALLOT

Sample Ballot - Nonpartisan  
 Wayne County, North Carolina  
 March 3, 2026

**N0125**



PCT: 11

**BALLOT MARKING INSTRUCTIONS**

- A. With the marking device provided or a black ball point pen, completely fill in the oval to the left of each candidate or selection of your choice as shown.
- B. If you tear, deface or wrongly mark this ballot, return it to request a replacement.



**REFERENDUM**

**Wayne County  
 Local Sales and Use Tax**

Local sales and use tax at the rate of one-quarter percent (0.25%) in addition to all other State and local sales and use taxes.

- For
- Against

**End of Ballot**

SAMPLE BALLOT

SAMPLE BALLOT

Sample Ballot - Nonpartisan  
Wayne County, North Carolina  
March 3, 2026

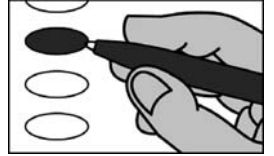
N0126



PCT: 12

**BALLOT MARKING INSTRUCTIONS**

- A. With the marking device provided or a black ball point pen, completely fill in the oval to the left of each candidate or selection of your choice as shown.
- B. If you tear, deface or wrongly mark this ballot, return it to request a replacement.



**REFERENDUM**

**Wayne County  
Local Sales and Use Tax**

Local sales and use tax at the rate of one-quarter percent (0.25%) in addition to all other State and local sales and use taxes.

- For
- Against

**End of Ballot**

SAMPLE BALLOT  
SAMPLE BALLOT  
SAMPLE BALLOT  
SAMPLE BALLOT  
SAMPLE BALLOT  
SAMPLE BALLOT  
SAMPLE BALLOT  
SAMPLE BALLOT  
SAMPLE BALLOT  
SAMPLE BALLOT

SAMPLE BALLOT  
SAMPLE BALLOT  
SAMPLE BALLOT  
SAMPLE BALLOT  
SAMPLE BALLOT  
SAMPLE BALLOT  
SAMPLE BALLOT  
SAMPLE BALLOT  
SAMPLE BALLOT  
SAMPLE BALLOT

Sample Ballot - Nonpartisan  
Wayne County, North Carolina  
March 3, 2026

**N0127**

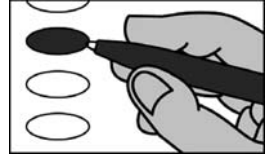


[Empty rectangular box]

PCT: 13

**BALLOT MARKING INSTRUCTIONS**

- A. With the marking device provided or a black ball point pen, completely fill in the oval to the left of each candidate or selection of your choice as shown.
- B. If you tear, deface or wrongly mark this ballot, return it to request a replacement.



**REFERENDUM**

**Wayne County  
Local Sales and Use Tax**

Local sales and use tax at the rate of one-quarter percent (0.25%) in addition to all other State and local sales and use taxes.

- For
- Against

**End of Ballot**

SAMPLE BALLOT  
SAMPLE BALLOT  
SAMPLE BALLOT  
SAMPLE BALLOT  
SAMPLE BALLOT  
SAMPLE BALLOT  
SAMPLE BALLOT  
SAMPLE BALLOT  
SAMPLE BALLOT  
SAMPLE BALLOT  
SAMPLE BALLOT

SAMPLE BALLOT  
SAMPLE BALLOT  
SAMPLE BALLOT  
SAMPLE BALLOT  
SAMPLE BALLOT  
SAMPLE BALLOT  
SAMPLE BALLOT  
SAMPLE BALLOT  
SAMPLE BALLOT  
SAMPLE BALLOT  
SAMPLE BALLOT

Sample Ballot - Nonpartisan  
Wayne County, North Carolina  
March 3, 2026

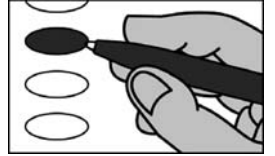
N0128



PCT: 14

**BALLOT MARKING INSTRUCTIONS**

- A. With the marking device provided or a black ball point pen, completely fill in the oval to the left of each candidate or selection of your choice as shown.
- B. If you tear, deface or wrongly mark this ballot, return it to request a replacement.



**REFERENDUM**

**Wayne County  
Local Sales and Use Tax**

Local sales and use tax at the rate of one-quarter percent (0.25%) in addition to all other State and local sales and use taxes.

- For
- Against

**End of Ballot**

SAMPLE BALLOT  
SAMPLE BALLOT  
SAMPLE BALLOT  
SAMPLE BALLOT  
SAMPLE BALLOT  
SAMPLE BALLOT  
SAMPLE BALLOT  
SAMPLE BALLOT  
SAMPLE BALLOT  
SAMPLE BALLOT  
SAMPLE BALLOT

SAMPLE BALLOT  
SAMPLE BALLOT  
SAMPLE BALLOT  
SAMPLE BALLOT  
SAMPLE BALLOT  
SAMPLE BALLOT  
SAMPLE BALLOT  
SAMPLE BALLOT  
SAMPLE BALLOT  
SAMPLE BALLOT  
SAMPLE BALLOT



Sample Ballot - Nonpartisan  
Wayne County, North Carolina  
March 3, 2026

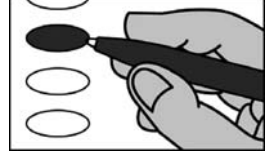
**N0129**



PCT: 15

**BALLOT MARKING INSTRUCTIONS**

- A. With the marking device provided or a black ball point pen, completely fill in the oval to the left of each candidate or selection of your choice as shown.
- B. If you tear, deface or wrongly mark this ballot, return it to request a replacement.



**REFERENDUM**

**Wayne County  
Local Sales and Use Tax**

Local sales and use tax at the rate of one-quarter percent (0.25%) in addition to all other State and local sales and use taxes.

- For
- Against

**End of Ballot**

SAMPLE BALLOT  
SAMPLE BALLOT  
SAMPLE BALLOT  
SAMPLE BALLOT  
SAMPLE BALLOT  
SAMPLE BALLOT  
SAMPLE BALLOT  
SAMPLE BALLOT  
SAMPLE BALLOT  
SAMPLE BALLOT

SAMPLE BALLOT  
SAMPLE BALLOT  
SAMPLE BALLOT  
SAMPLE BALLOT  
SAMPLE BALLOT  
SAMPLE BALLOT  
SAMPLE BALLOT  
SAMPLE BALLOT  
SAMPLE BALLOT  
SAMPLE BALLOT

Sample Ballot - Nonpartisan  
Wayne County, North Carolina  
March 3, 2026

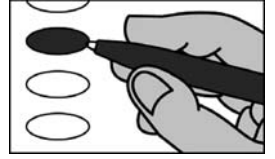
**N0130**



PCT: 16

**BALLOT MARKING INSTRUCTIONS**

- A. With the marking device provided or a black ball point pen, completely fill in the oval to the left of each candidate or selection of your choice as shown.
- B. If you tear, deface or wrongly mark this ballot, return it to request a replacement.



**REFERENDUM**

**Wayne County  
Local Sales and Use Tax**

Local sales and use tax at the rate of one-quarter percent (0.25%) in addition to all other State and local sales and use taxes.

- For
- Against

**End of Ballot**

SAMPLE BALLOT  
SAMPLE BALLOT  
SAMPLE BALLOT  
SAMPLE BALLOT  
SAMPLE BALLOT  
SAMPLE BALLOT  
SAMPLE BALLOT  
SAMPLE BALLOT  
SAMPLE BALLOT  
SAMPLE BALLOT

SAMPLE BALLOT  
SAMPLE BALLOT  
SAMPLE BALLOT  
SAMPLE BALLOT  
SAMPLE BALLOT  
SAMPLE BALLOT  
SAMPLE BALLOT  
SAMPLE BALLOT  
SAMPLE BALLOT  
SAMPLE BALLOT

Sample Ballot - Nonpartisan  
Wayne County, North Carolina  
March 3, 2026

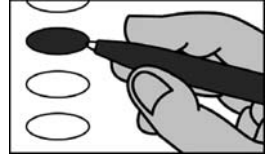
**N0131**



PCT: 17

**BALLOT MARKING INSTRUCTIONS**

- A. With the marking device provided or a black ball point pen, completely fill in the oval to the left of each candidate or selection of your choice as shown.
- B. If you tear, deface or wrongly mark this ballot, return it to request a replacement.



**REFERENDUM**

**Wayne County  
Local Sales and Use Tax**

Local sales and use tax at the rate of one-quarter percent (0.25%) in addition to all other State and local sales and use taxes.

- For
- Against

**End of Ballot**

SAMPLE BALLOT

SAMPLE BALLOT

Sample Ballot - Nonpartisan  
Wayne County, North Carolina  
March 3, 2026

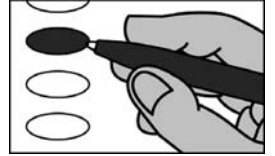
N0132



PCT: 18

**BALLOT MARKING INSTRUCTIONS**

- A. With the marking device provided or a black ball point pen, completely fill in the oval to the left of each candidate or selection of your choice as shown.
- B. If you tear, deface or wrongly mark this ballot, return it to request a replacement.



**REFERENDUM**

**Wayne County  
Local Sales and Use Tax**

Local sales and use tax at the rate of one-quarter percent (0.25%) in addition to all other State and local sales and use taxes.

- For
- Against

**End of Ballot**

SAMPLE BALLOT  
SAMPLE BALLOT  
SAMPLE BALLOT  
SAMPLE BALLOT  
SAMPLE BALLOT  
SAMPLE BALLOT  
SAMPLE BALLOT  
SAMPLE BALLOT  
SAMPLE BALLOT  
SAMPLE BALLOT

SAMPLE BALLOT  
SAMPLE BALLOT  
SAMPLE BALLOT  
SAMPLE BALLOT  
SAMPLE BALLOT  
SAMPLE BALLOT  
SAMPLE BALLOT  
SAMPLE BALLOT  
SAMPLE BALLOT  
SAMPLE BALLOT

Sample Ballot - Nonpartisan  
Wayne County, North Carolina  
March 3, 2026

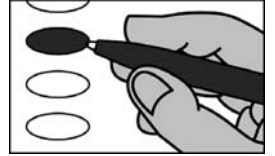
N0133



PCT: 1920

**BALLOT MARKING INSTRUCTIONS**

- A. With the marking device provided or a black ball point pen, completely fill in the oval to the left of each candidate or selection of your choice as shown.
- B. If you tear, deface or wrongly mark this ballot, return it to request a replacement.



**REFERENDUM**

**Wayne County  
Local Sales and Use Tax**

Local sales and use tax at the rate of one-quarter percent (0.25%) in addition to all other State and local sales and use taxes.

- For
- Against

**End of Ballot**

SAMPLE BALLOT  
SAMPLE BALLOT  
SAMPLE BALLOT  
SAMPLE BALLOT  
SAMPLE BALLOT  
SAMPLE BALLOT  
SAMPLE BALLOT  
SAMPLE BALLOT  
SAMPLE BALLOT  
SAMPLE BALLOT

SAMPLE BALLOT  
SAMPLE BALLOT  
SAMPLE BALLOT  
SAMPLE BALLOT  
SAMPLE BALLOT  
SAMPLE BALLOT  
SAMPLE BALLOT  
SAMPLE BALLOT  
SAMPLE BALLOT  
SAMPLE BALLOT

Sample Ballot - Nonpartisan  
Wayne County, North Carolina  
March 3, 2026

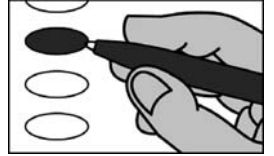
**N0134**



PCT: 21

**BALLOT MARKING INSTRUCTIONS**

- A. With the marking device provided or a black ball point pen, completely fill in the oval to the left of each candidate or selection of your choice as shown.
- B. If you tear, deface or wrongly mark this ballot, return it to request a replacement.



**REFERENDUM**

**Wayne County  
Local Sales and Use Tax**

Local sales and use tax at the rate of one-quarter percent (0.25%) in addition to all other State and local sales and use taxes.

- For
- Against

**End of Ballot**

SAMPLE BALLOT  
SAMPLE BALLOT  
SAMPLE BALLOT  
SAMPLE BALLOT  
SAMPLE BALLOT  
SAMPLE BALLOT  
SAMPLE BALLOT  
SAMPLE BALLOT  
SAMPLE BALLOT  
SAMPLE BALLOT

SAMPLE BALLOT  
SAMPLE BALLOT  
SAMPLE BALLOT  
SAMPLE BALLOT  
SAMPLE BALLOT  
SAMPLE BALLOT  
SAMPLE BALLOT  
SAMPLE BALLOT  
SAMPLE BALLOT  
SAMPLE BALLOT

Sample Ballot - Nonpartisan  
Wayne County, North Carolina  
March 3, 2026

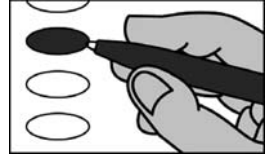
N0135



PCT: 22

**BALLOT MARKING INSTRUCTIONS**

- A. With the marking device provided or a black ball point pen, completely fill in the oval to the left of each candidate or selection of your choice as shown.
- B. If you tear, deface or wrongly mark this ballot, return it to request a replacement.



**REFERENDUM**

**Wayne County  
Local Sales and Use Tax**

Local sales and use tax at the rate of one-quarter percent (0.25%) in addition to all other State and local sales and use taxes.

- For
- Against

**End of Ballot**

SAMPLE BALLOT  
SAMPLE BALLOT  
SAMPLE BALLOT  
SAMPLE BALLOT  
SAMPLE BALLOT  
SAMPLE BALLOT  
SAMPLE BALLOT  
SAMPLE BALLOT  
SAMPLE BALLOT  
SAMPLE BALLOT  
SAMPLE BALLOT

SAMPLE BALLOT  
SAMPLE BALLOT  
SAMPLE BALLOT  
SAMPLE BALLOT  
SAMPLE BALLOT  
SAMPLE BALLOT  
SAMPLE BALLOT  
SAMPLE BALLOT  
SAMPLE BALLOT  
SAMPLE BALLOT  
SAMPLE BALLOT

Sample Ballot - Nonpartisan  
Wayne County, North Carolina  
March 3, 2026

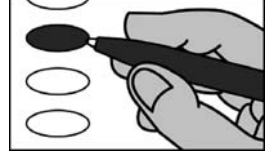
N0136



PCT: 23

**BALLOT MARKING INSTRUCTIONS**

- A. With the marking device provided or a black ball point pen, completely fill in the oval to the left of each candidate or selection of your choice as shown.
- B. If you tear, deface or wrongly mark this ballot, return it to request a replacement.



**REFERENDUM**

**Wayne County  
Local Sales and Use Tax**

Local sales and use tax at the rate of one-quarter percent (0.25%) in addition to all other State and local sales and use taxes.

- For
- Against

End of Ballot

SAMPLE BALLOT  
SAMPLE BALLOT  
SAMPLE BALLOT  
SAMPLE BALLOT  
SAMPLE BALLOT  
SAMPLE BALLOT  
SAMPLE BALLOT  
SAMPLE BALLOT  
SAMPLE BALLOT  
SAMPLE BALLOT  
SAMPLE BALLOT  
SAMPLE BALLOT

SAMPLE BALLOT  
SAMPLE BALLOT  
SAMPLE BALLOT  
SAMPLE BALLOT  
SAMPLE BALLOT  
SAMPLE BALLOT  
SAMPLE BALLOT  
SAMPLE BALLOT  
SAMPLE BALLOT  
SAMPLE BALLOT  
SAMPLE BALLOT  
SAMPLE BALLOT



Sample Ballot - Nonpartisan  
 Wayne County, North Carolina  
 March 3, 2026

**N0137**

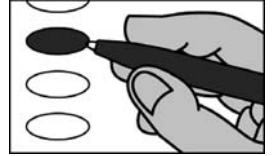


[Empty rectangular box for marking]

PCT: 24

**BALLOT MARKING INSTRUCTIONS**

- A. With the marking device provided or a black ball point pen, completely fill in the oval to the left of each candidate or selection of your choice as shown.  
 B. If you tear, deface or wrongly mark this ballot, return it to request a replacement.



**REFERENDUM**

**Wayne County  
 Local Sales and Use Tax**

Local sales and use tax at the rate of one-quarter percent (0.25%) in addition to all other State and local sales and use taxes.

- For  
 Against

**End of Ballot**

SAMPLE BALLOT

SAMPLE BALLOT

Sample Ballot - Nonpartisan  
Wayne County, North Carolina  
March 3, 2026

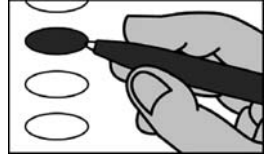
**N0138**



PCT: 2530

**BALLOT MARKING INSTRUCTIONS**

- A. With the marking device provided or a black ball point pen, completely fill in the oval to the left of each candidate or selection of your choice as shown.
- B. If you tear, deface or wrongly mark this ballot, return it to request a replacement.



**REFERENDUM**

**Wayne County  
Local Sales and Use Tax**

Local sales and use tax at the rate of one-quarter percent (0.25%) in addition to all other State and local sales and use taxes.

- For
- Against

**End of Ballot**

SAMPLE BALLOT  
SAMPLE BALLOT  
SAMPLE BALLOT  
SAMPLE BALLOT  
SAMPLE BALLOT  
SAMPLE BALLOT  
SAMPLE BALLOT  
SAMPLE BALLOT  
SAMPLE BALLOT  
SAMPLE BALLOT

SAMPLE BALLOT  
SAMPLE BALLOT  
SAMPLE BALLOT  
SAMPLE BALLOT  
SAMPLE BALLOT  
SAMPLE BALLOT  
SAMPLE BALLOT  
SAMPLE BALLOT  
SAMPLE BALLOT  
SAMPLE BALLOT

Sample Ballot - Nonpartisan  
Wayne County, North Carolina  
March 3, 2026

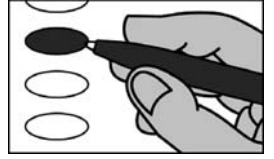
**N0139**



PCT: 26

**BALLOT MARKING INSTRUCTIONS**

- A. With the marking device provided or a black ball point pen, completely fill in the oval to the left of each candidate or selection of your choice as shown.
- B. If you tear, deface or wrongly mark this ballot, return it to request a replacement.



**REFERENDUM**

**Wayne County  
Local Sales and Use Tax**

Local sales and use tax at the rate of one-quarter percent (0.25%) in addition to all other State and local sales and use taxes.

- For
- Against

**End of Ballot**

SAMPLE BALLOT  
SAMPLE BALLOT  
SAMPLE BALLOT  
SAMPLE BALLOT  
SAMPLE BALLOT  
SAMPLE BALLOT  
SAMPLE BALLOT  
SAMPLE BALLOT  
SAMPLE BALLOT  
SAMPLE BALLOT

SAMPLE BALLOT  
SAMPLE BALLOT  
SAMPLE BALLOT  
SAMPLE BALLOT  
SAMPLE BALLOT  
SAMPLE BALLOT  
SAMPLE BALLOT  
SAMPLE BALLOT  
SAMPLE BALLOT  
SAMPLE BALLOT

Sample Ballot - Nonpartisan  
Wayne County, North Carolina  
March 3, 2026

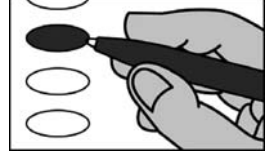
**N0140**



PCT: 27

**BALLOT MARKING INSTRUCTIONS**

- A. With the marking device provided or a black ball point pen, completely fill in the oval to the left of each candidate or selection of your choice as shown.
- B. If you tear, deface or wrongly mark this ballot, return it to request a replacement.



**REFERENDUM**

**Wayne County  
Local Sales and Use Tax**

Local sales and use tax at the rate of one-quarter percent (0.25%) in addition to all other State and local sales and use taxes.

- For
- Against

**End of Ballot**

SAMPLE BALLOT  
SAMPLE BALLOT  
SAMPLE BALLOT  
SAMPLE BALLOT  
SAMPLE BALLOT  
SAMPLE BALLOT  
SAMPLE BALLOT  
SAMPLE BALLOT  
SAMPLE BALLOT  
SAMPLE BALLOT

SAMPLE BALLOT  
SAMPLE BALLOT  
SAMPLE BALLOT  
SAMPLE BALLOT  
SAMPLE BALLOT  
SAMPLE BALLOT  
SAMPLE BALLOT  
SAMPLE BALLOT  
SAMPLE BALLOT  
SAMPLE BALLOT

Sample Ballot - Nonpartisan  
Wayne County, North Carolina  
March 3, 2026

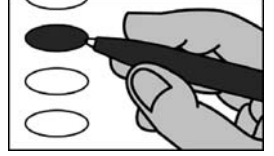
**N0141**



PCT: 28

**BALLOT MARKING INSTRUCTIONS**

- A. With the marking device provided or a black ball point pen, completely fill in the oval to the left of each candidate or selection of your choice as shown.
- B. If you tear, deface or wrongly mark this ballot, return it to request a replacement.



**REFERENDUM**

**Wayne County  
Local Sales and Use Tax**

Local sales and use tax at the rate of one-quarter percent (0.25%) in addition to all other State and local sales and use taxes.

- For
- Against

**End of Ballot**

SAMPLE BALLOT  
SAMPLE BALLOT  
SAMPLE BALLOT  
SAMPLE BALLOT  
SAMPLE BALLOT  
SAMPLE BALLOT  
SAMPLE BALLOT  
SAMPLE BALLOT  
SAMPLE BALLOT  
SAMPLE BALLOT  
SAMPLE BALLOT  
SAMPLE BALLOT

SAMPLE BALLOT  
SAMPLE BALLOT  
SAMPLE BALLOT  
SAMPLE BALLOT  
SAMPLE BALLOT  
SAMPLE BALLOT  
SAMPLE BALLOT  
SAMPLE BALLOT  
SAMPLE BALLOT  
SAMPLE BALLOT  
SAMPLE BALLOT  
SAMPLE BALLOT

Sample Ballot - Nonpartisan  
Wayne County, North Carolina  
March 3, 2026

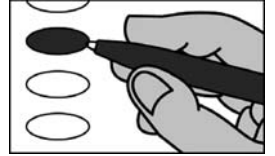
**N0142**



PCT: 29

**BALLOT MARKING INSTRUCTIONS**

- A. With the marking device provided or a black ball point pen, completely fill in the oval to the left of each candidate or selection of your choice as shown.
- B. If you tear, deface or wrongly mark this ballot, return it to request a replacement.



**REFERENDUM**

**Wayne County  
Local Sales and Use Tax**

Local sales and use tax at the rate of one-quarter percent (0.25%) in addition to all other State and local sales and use taxes.

- For
- Against

**End of Ballot**

SAMPLE BALLOT  
SAMPLE BALLOT  
SAMPLE BALLOT  
SAMPLE BALLOT  
SAMPLE BALLOT  
SAMPLE BALLOT  
SAMPLE BALLOT  
SAMPLE BALLOT  
SAMPLE BALLOT  
SAMPLE BALLOT

SAMPLE BALLOT  
SAMPLE BALLOT  
SAMPLE BALLOT  
SAMPLE BALLOT  
SAMPLE BALLOT  
SAMPLE BALLOT  
SAMPLE BALLOT  
SAMPLE BALLOT  
SAMPLE BALLOT  
SAMPLE BALLOT